

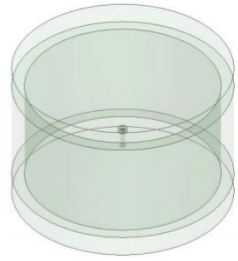
*Ka band Omni-Directional Antenna  
4 dBi Typ. Gain, 17-30GHz Frequency Range*

**Bi-conical Antenna Data Sheet**

**RM-BCA1730-4**

**Specifications**

RM-BCA1730-4		
Item	Specification	Units
Frequency Range	17-30	GHz
Gain	4 Typ.	dBi
VSWR	1.2 Typ.	
Polarization	Vertical	
Connector	N Female	
Size(L*W*H)	Ø52*62(±5)	mm
Weight	About 0.044	kg

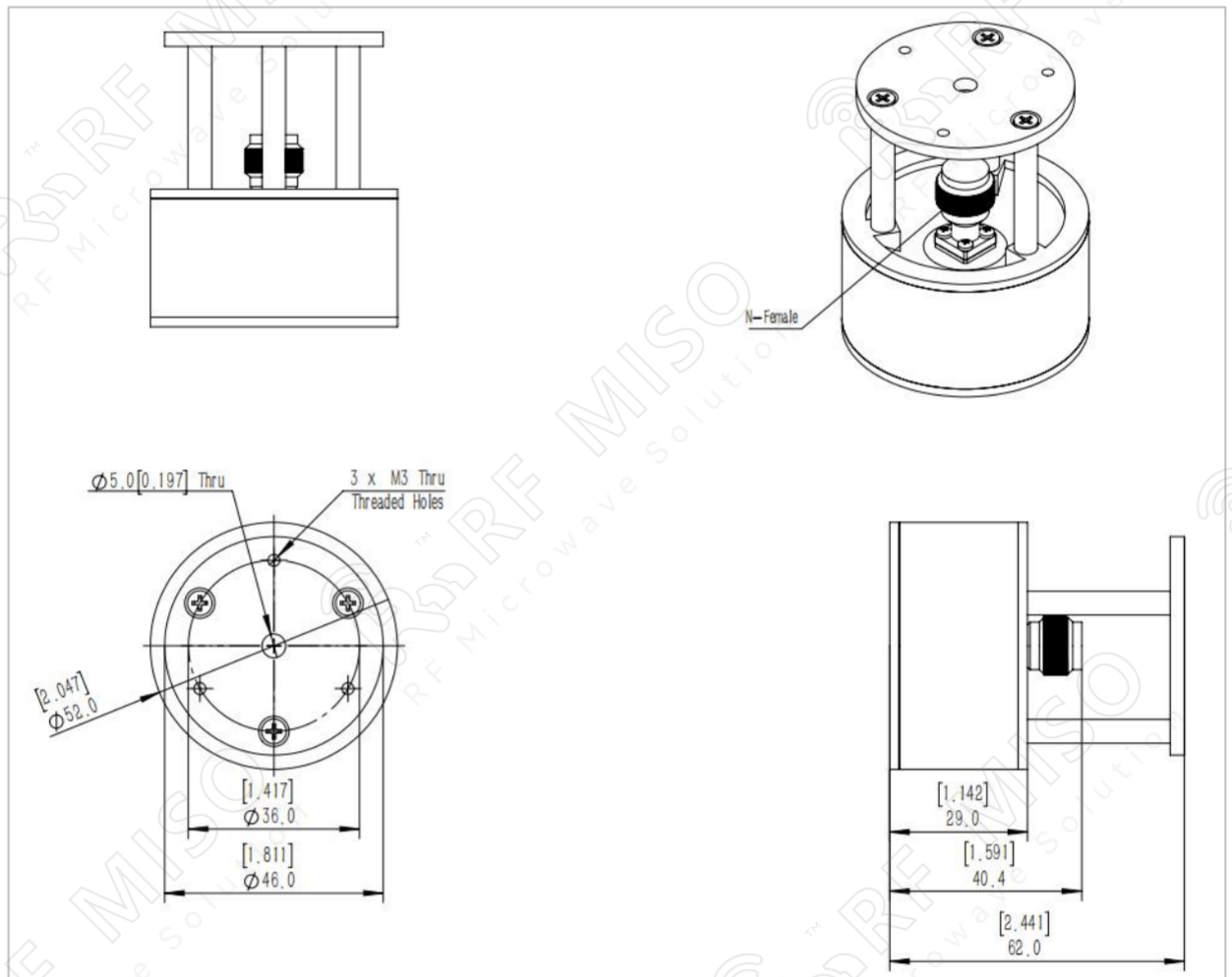


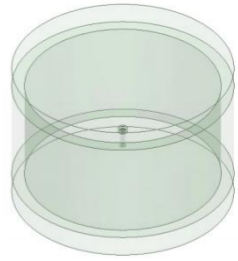
*Ka band Omni-Directional Antenna*  
*4 dBi Typ. Gain, 17-30GHz Frequency Range*

**Bi-conical Antenna Data Sheet**

**RM-BCA1730-4**

**Outline Drawing**





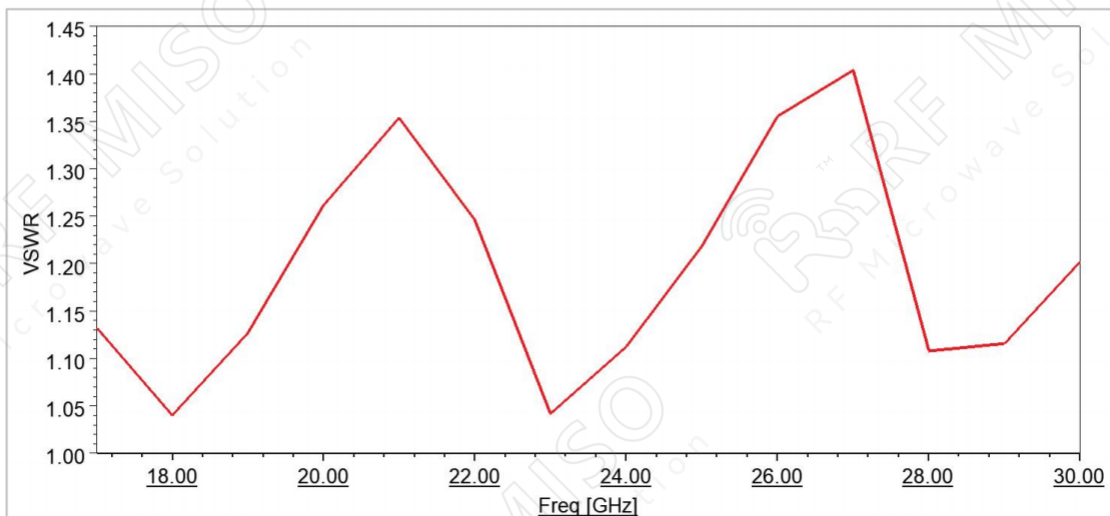
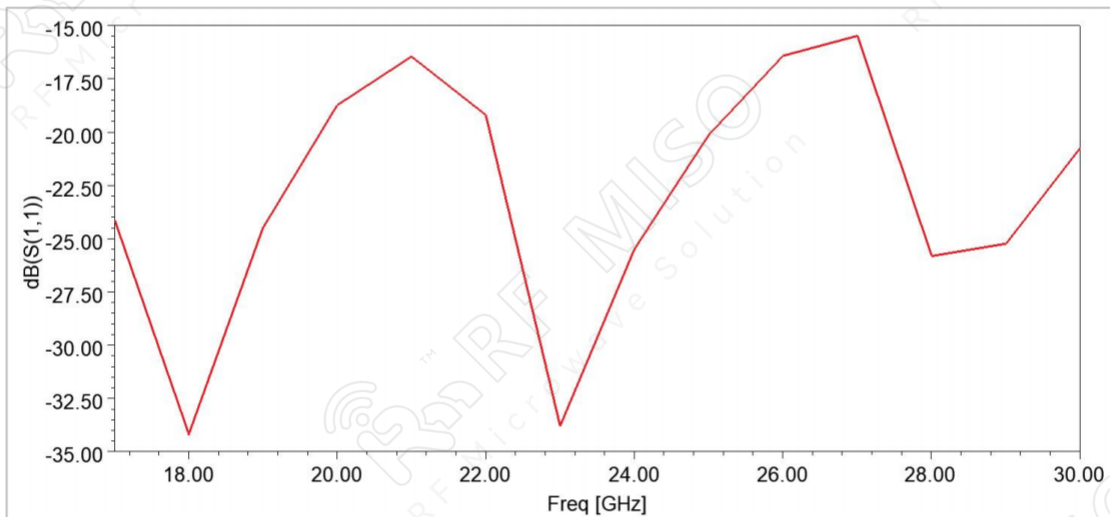
*Ka band Omni-Directional Antenna  
4 dBi Typ. Gain, 17-30GHz Frequency Range*

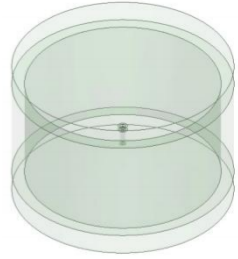
**Bi-conical Antenna Data Sheet**

**RM-BCA1730-4**

**Simulation Data**

**VSWR**



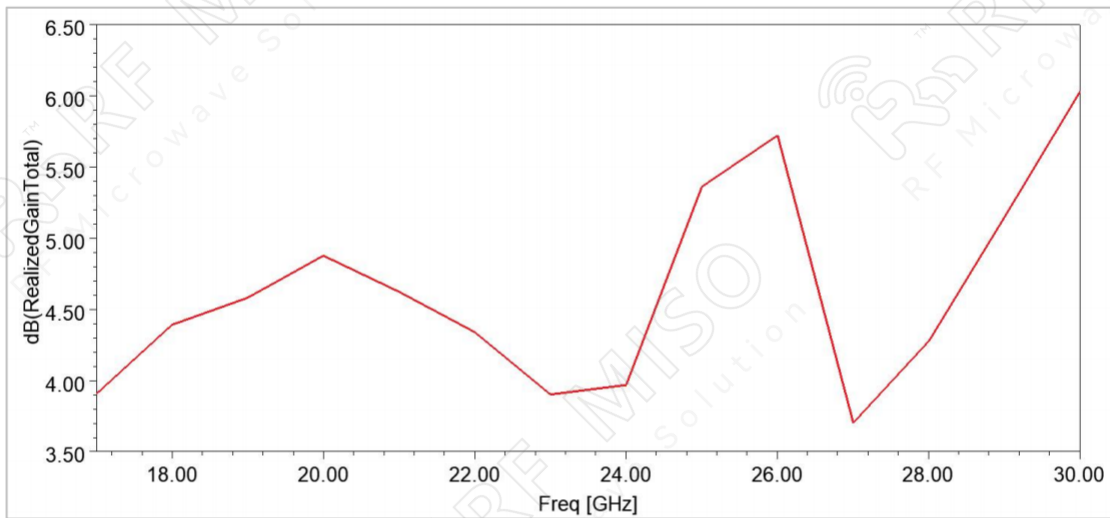


*Ka band Omni-Directional Antenna*  
*4 dBi Typ. Gain, 17-30GHz Frequency Range*

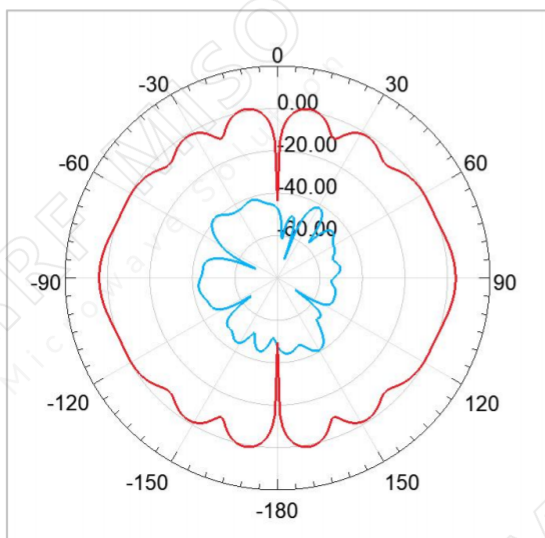
**Bi-conical Antenna Data Sheet**

**RM-BCA1730-4**

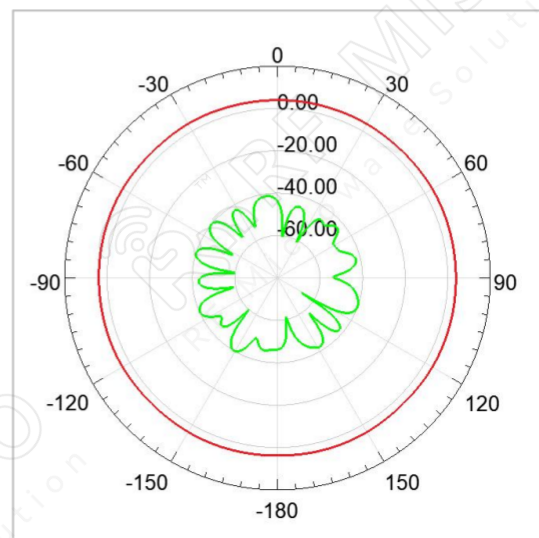
**Gain**



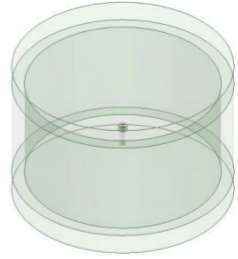
**Gain Pattern**



17 GHz



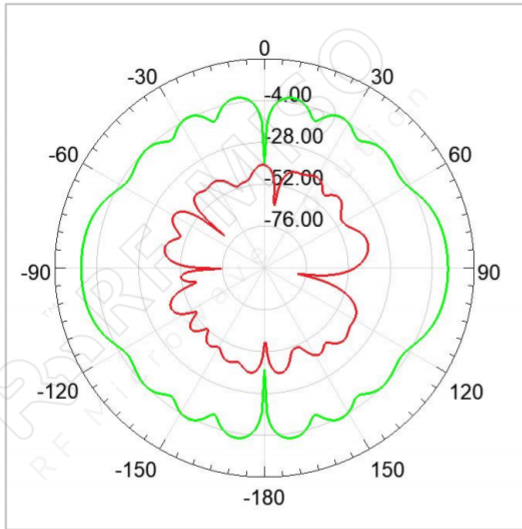
17 GHz



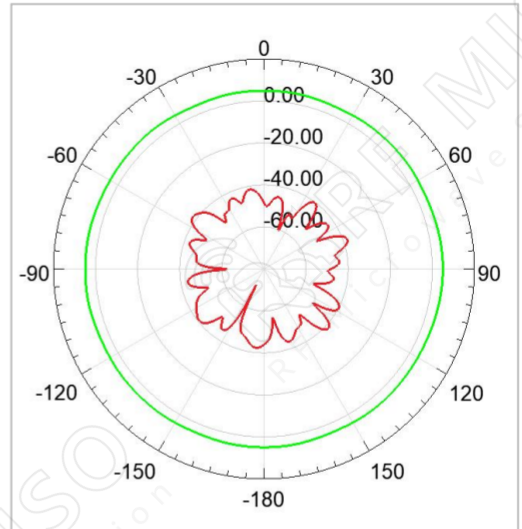
*Ka band Omni-Directional Antenna*  
*4 dBi Typ. Gain, 17-30GHz Frequency Range*

**Bi-conical Antenna Data Sheet**

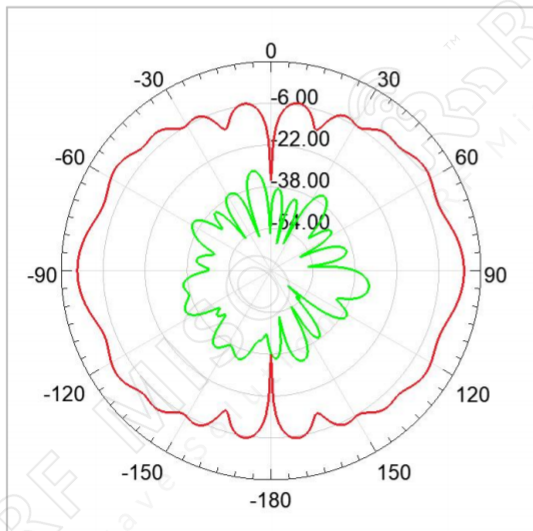
**RM-BCA1730-4**



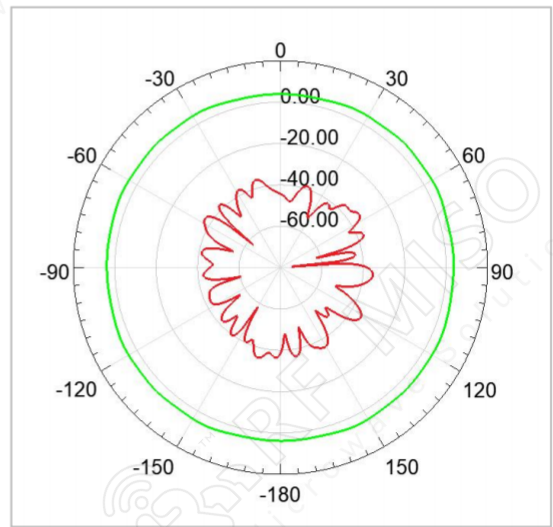
20 GHz



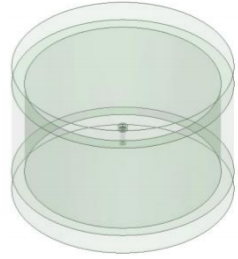
20 GHz



23 GHz



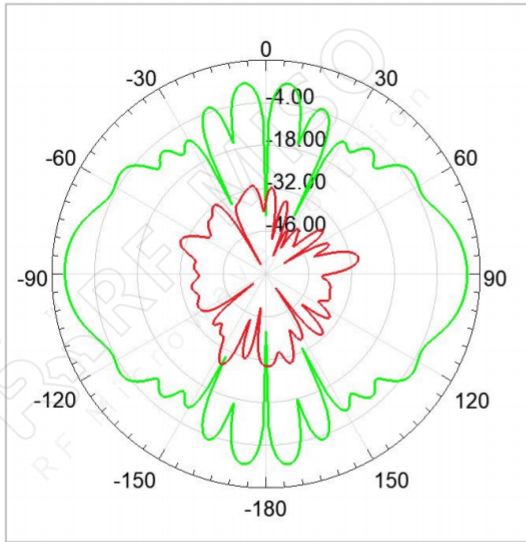
23 GHz



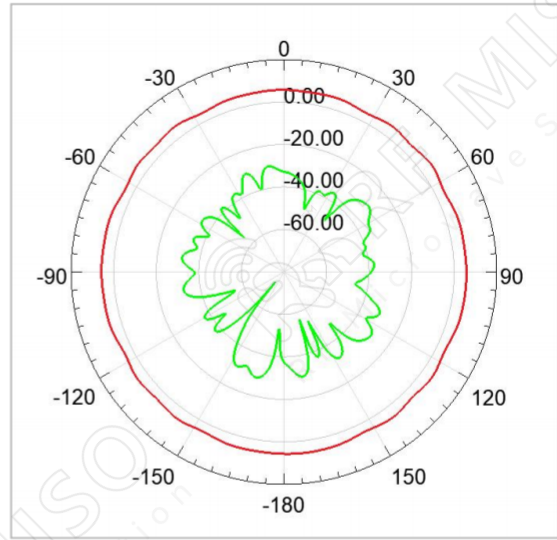
*Ka band Omni-Directional Antenna  
4 dBi Typ. Gain, 17-30GHz Frequency Range*

**Bi-conical Antenna Data Sheet**

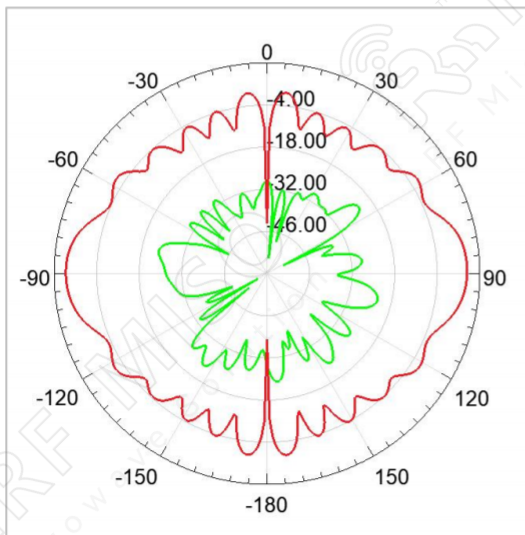
**RM-BCA1730-4**



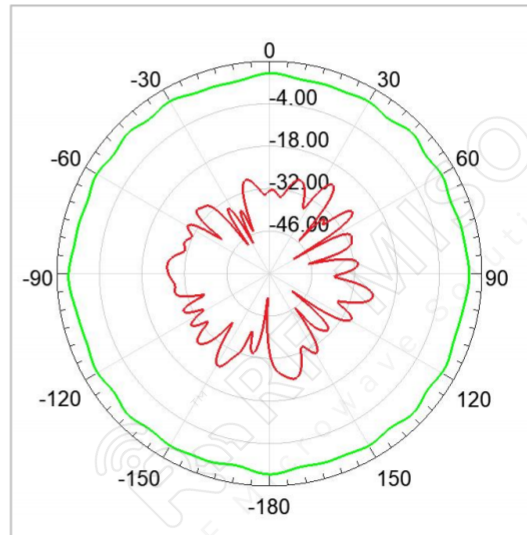
26 GHz



26 GHz



30GHz



30GHz