

*Broadband Horn Antenna  
10 dBi Typ. Gain, 0.8 GHz-8 GHz Frequency Range*

## Broadband Horn Antenna Data Sheet

**RM-BDHA088-10**

### Features

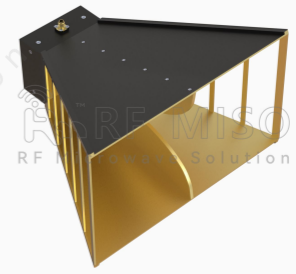
- Double-Ridge Waveguide
- Linear Polarization
- SMA Female Connector
- Mounting Bracket Included

### Description

The **RM-BDHA088-10** from RF MISO is a broadband gain horn antenna that operates from 0.8 to 8 GHz. The antenna offers a typical gain of 10 dBi and VSWR1.5:1 with a SMA Female coaxial connector. Featuring high-power handling capability, low loss, high directivity and near constant electrical performance, the antenna is used in a variety of applications such as microwave testing, satellite antenna testing, direction finding, surveillance, plus EMC and antenna measurements.

### Specifications

RM-BDHA088-10		
Item	Specification	Units
Frequency Range	0.8-8	GHz
Gain	10 Typ.	dBi
VSWR	1.5:1 Typ.	
Polarization	Linear	
Connector	SMA-F	
Material	Al	
Surface Treatment	Paint	
Size	288.17*162.23*230	mm
Weight	2.458	kg

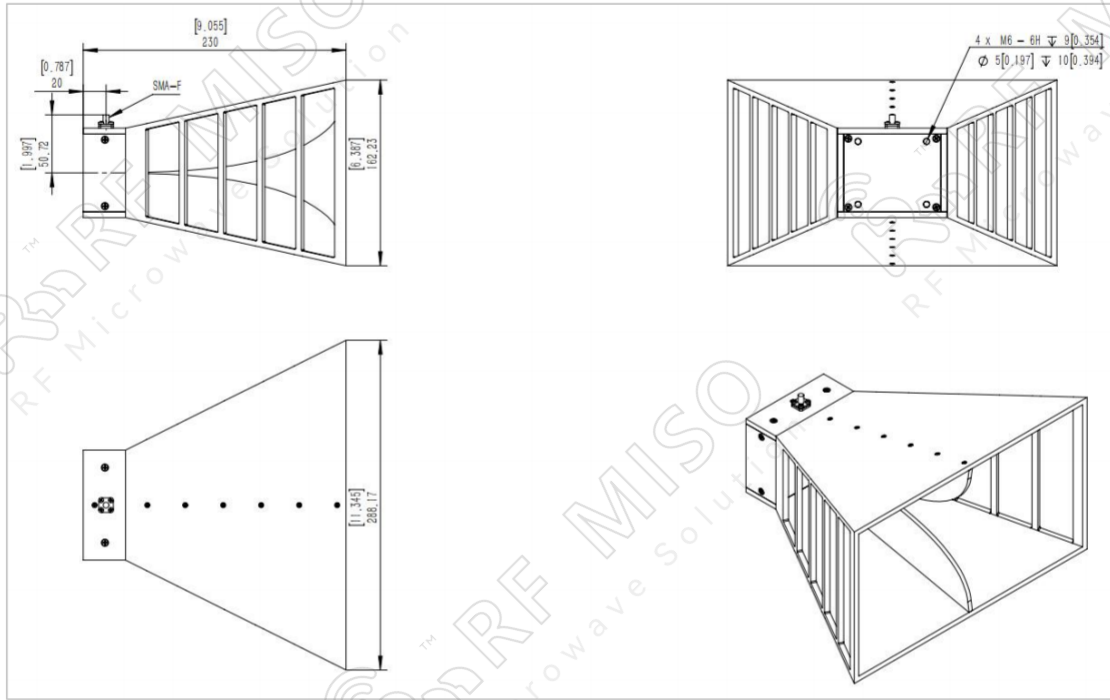


*Broadband Horn Antenna*  
*10 dBi Typ. Gain, 0.8 GHz-8 GHz Frequency Range*

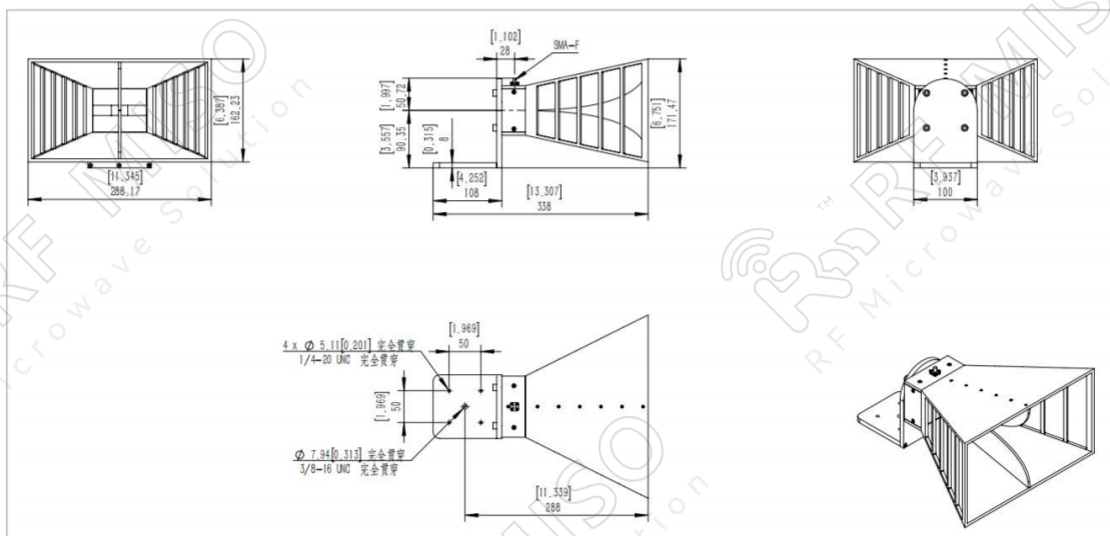
**Broadband Horn Antenna Data Sheet**

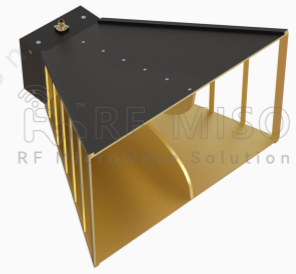
**RM-BDHA088-10**

**Outline Drawing (Size: mm)**



**Outline Drawing with Mounting Bracket:**



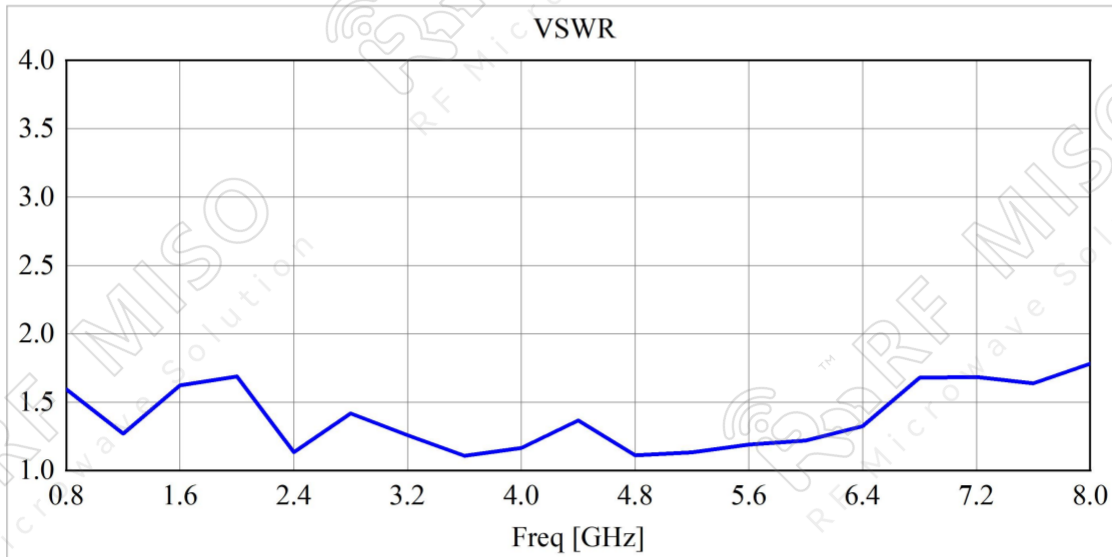
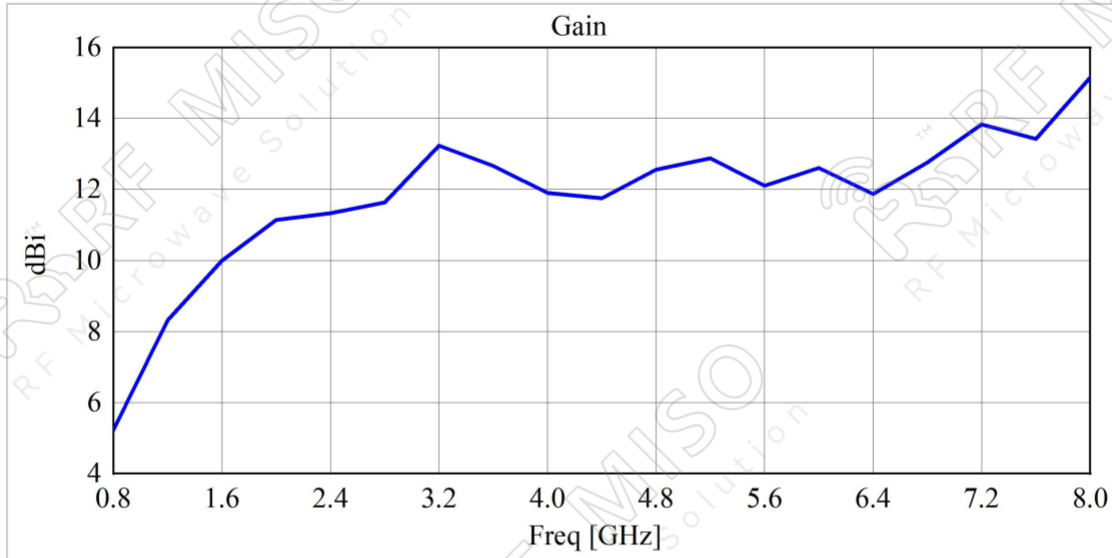


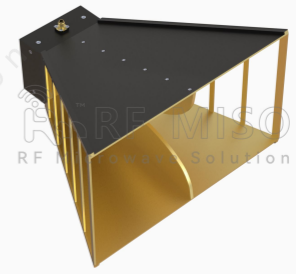
*Broadband Horn Antenna*  
*10 dBi Typ. Gain, 0.8 GHz-8 GHz Frequency Range*

**Broadband Horn Antenna Data Sheet**

**RM-BDHA088-10**

**Simulated Data**

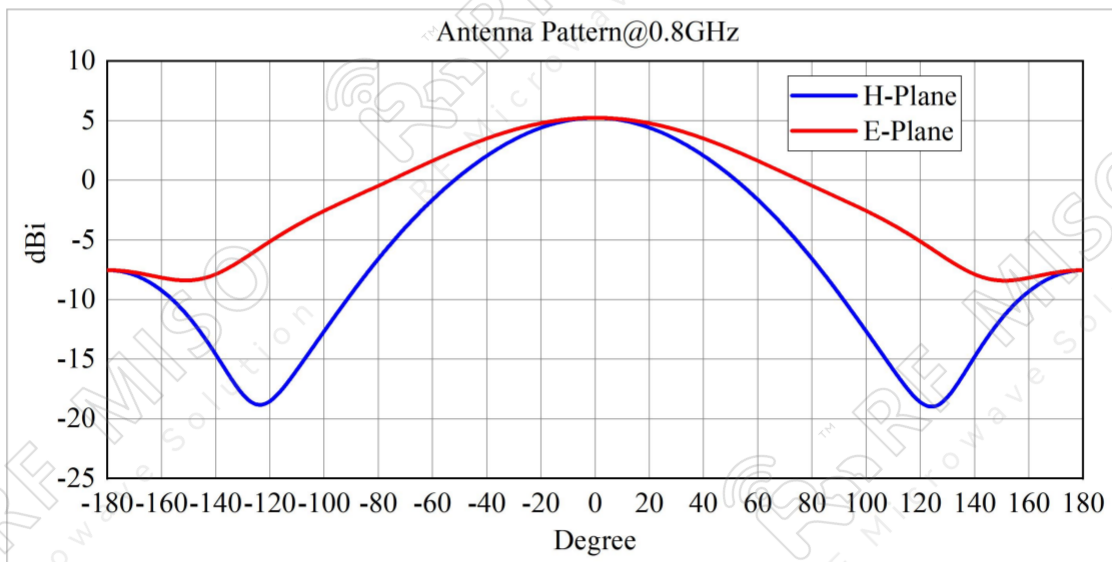
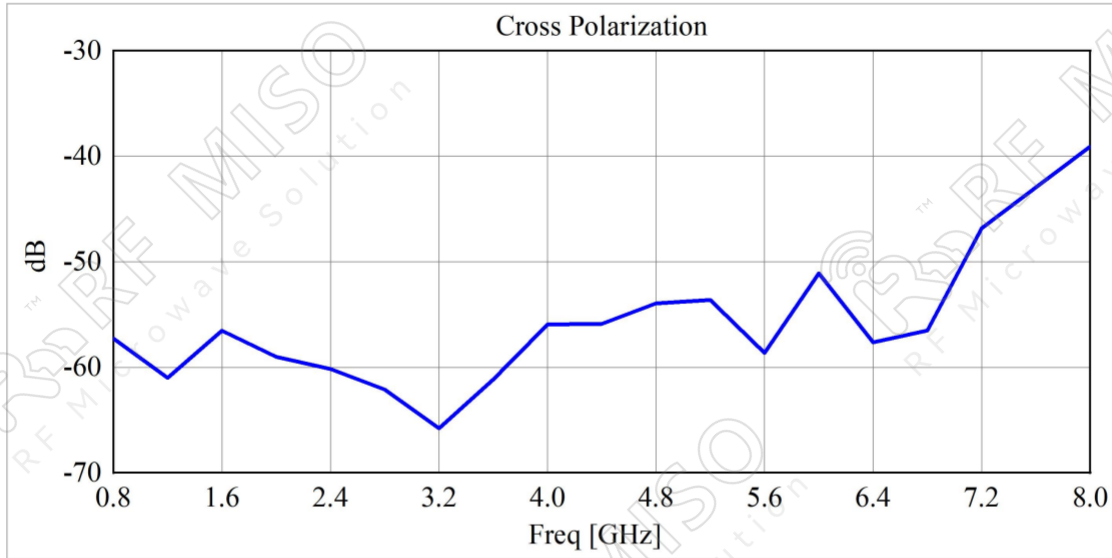


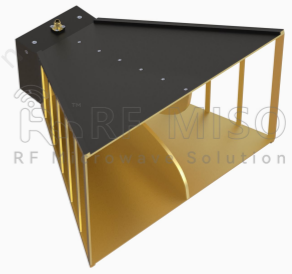


*Broadband Horn Antenna*  
*10 dBi Typ. Gain, 0.8 GHz-8 GHz Frequency Range*

**Broadband Horn Antenna Data Sheet**

**RM-BDHA088-10**

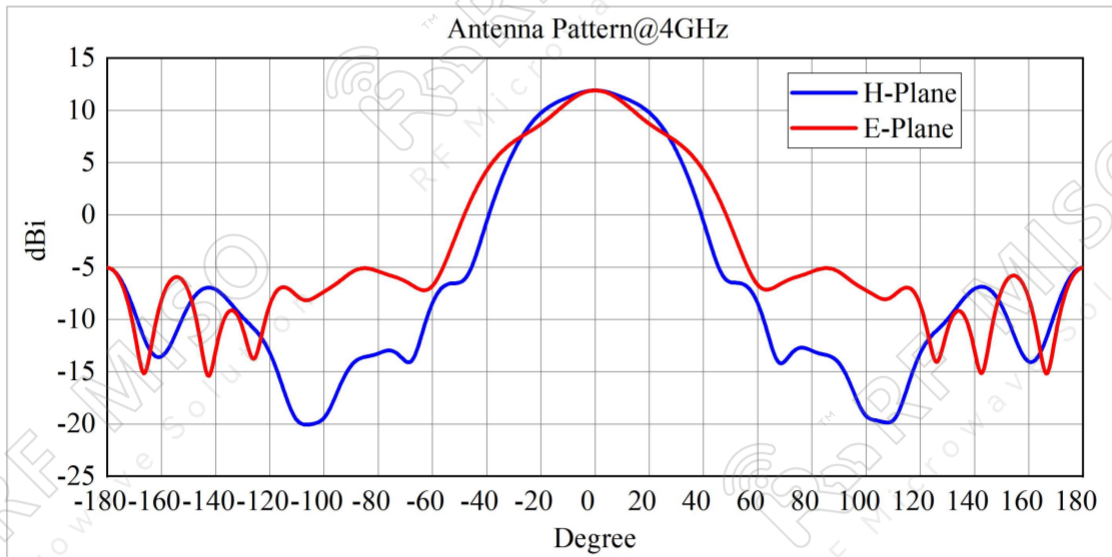
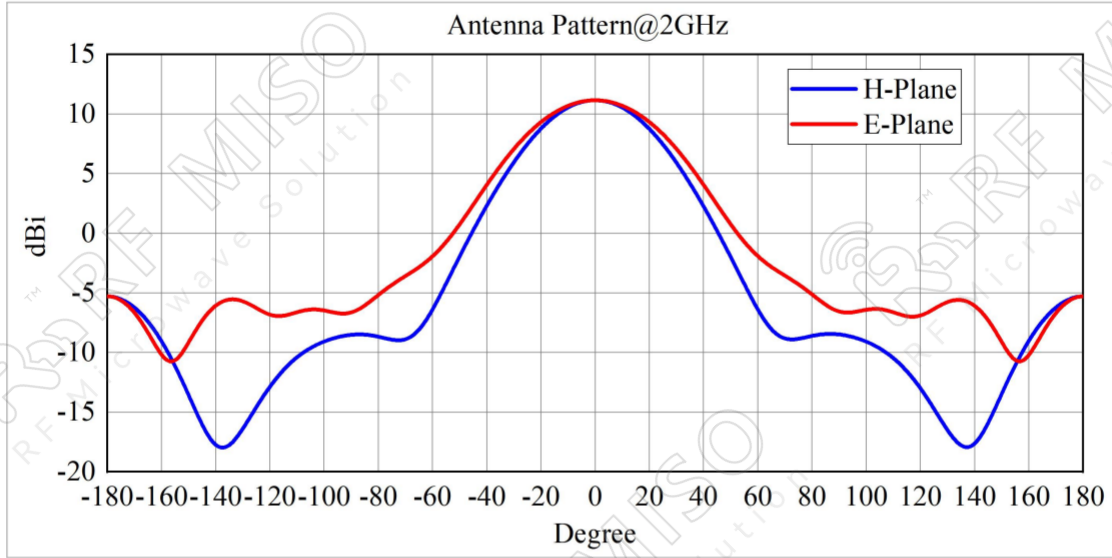


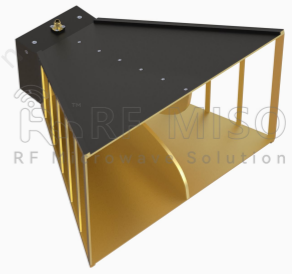


*Broadband Horn Antenna*  
*10 dBi Typ. Gain, 0.8 GHz-8 GHz Frequency Range*

**Broadband Horn Antenna Data Sheet**

**RM-BDHA088-10**





*Broadband Horn Antenna*  
*10 dBi Typ. Gain, 0.8 GHz-8 GHz Frequency Range*

**Broadband Horn Antenna Data Sheet**

**RM-BDHA088-10**

