



*Broadband Horn Antenna  
14 dBi Typ. Gain, 18-40 GHz Frequency Range*

## Broadband Horn Antenna Data Sheet

**RM-BDHA1840-14**

### Features

- Ideal for Antenna Measurement
- Low VSWR
- Moderate Gain
- Broadband Operation
- Linear Polarization
- Small Size

### Descriptions

RF MISO's **Model RM-BDHA1840-14** is a linear polarized broadband horn antenna that operates from 18 to 40 GHz. The antenna offers a typical gain of 14 dBi and low VSWR 1.5:1 with 2.92-KFD connector. The antenna is used for long time trouble-free applications in indoor and outdoor environments. It can be widely used in EMI detection, orientation, reconnaissance, antenna gain and pattern measurement and other applications.

### Specifications

RM-BDHA1840-14		
Parameters	Typical	Units
Frequency Range	18-40	GHz
Gain	13-15	dBi
VSWR	1.5 Typ.	
Polarization	Linear	
Connector	2.92-KFD	
Surface Treatment	Paint	
Power	20 Max	CW
Treatment	Paint	
Size	44*40*40(L*W*H)	mm
Weight	80	g

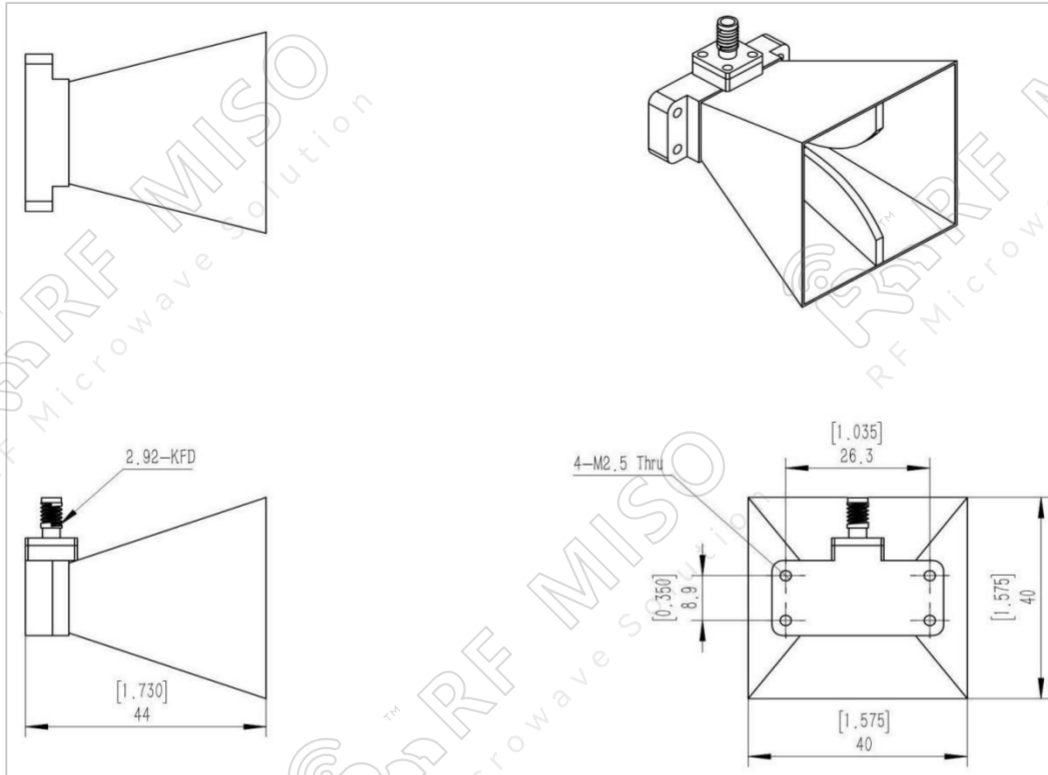


Broadband Horn Antenna  
14 dBi Typ. Gain, 18-40 GHz Frequency Range

**Broadband Horn Antenna Data Sheet**

**RM-BDHA1840-14**

**Outline Drawing**



**Test Data**

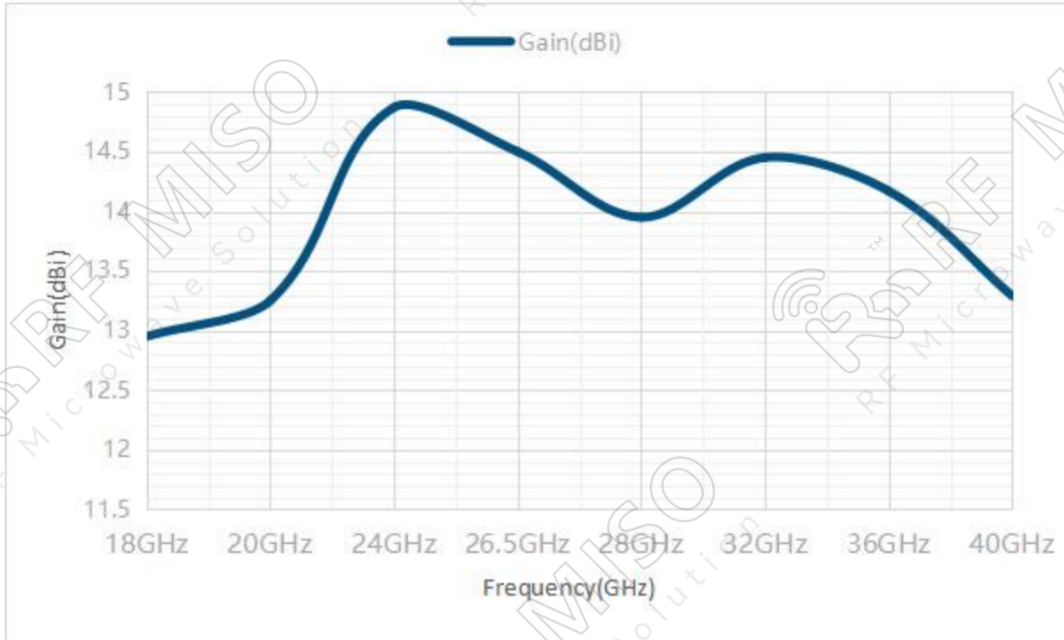




*Broadband Horn Antenna  
14 dBi Typ. Gain, 18-40 GHz Frequency Range*

**Broadband Horn Antenna Data Sheet**

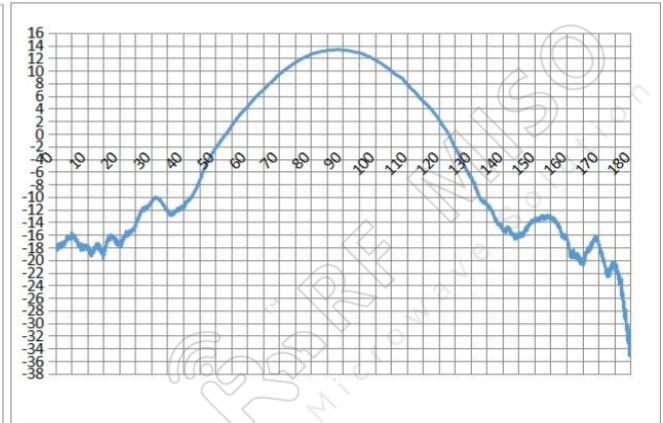
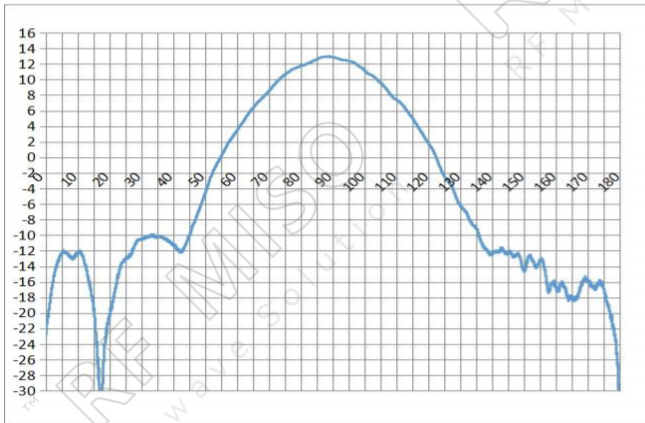
**RM-BDHA1840-14**



**Gain Pattern**

18GHz

20GHz



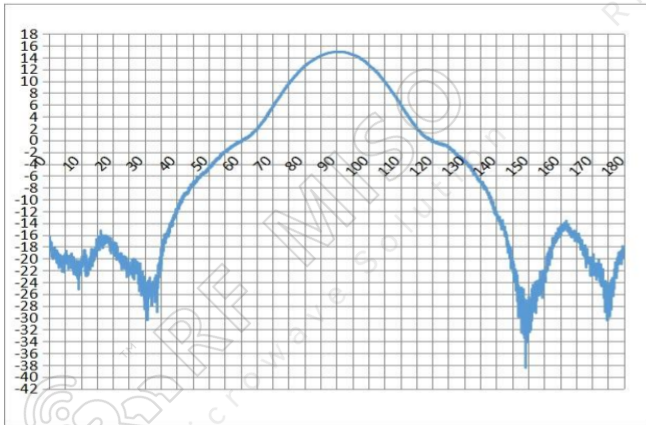


**Broadband Horn Antenna**  
14 dBi Typ. Gain, 18-40 GHz Frequency Range

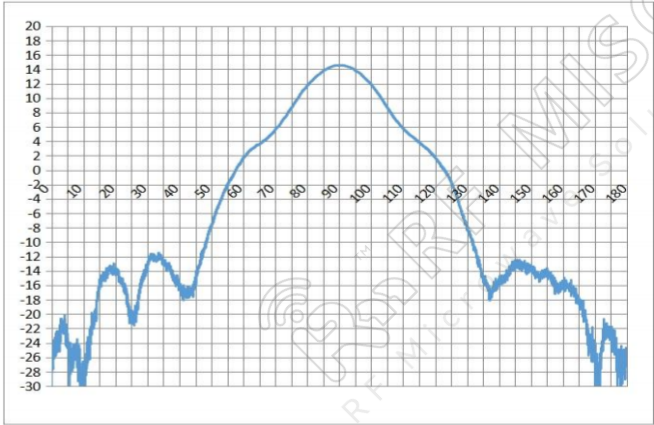
**Broadband Horn Antenna Data Sheet**

**RM-BDHA1840-14**

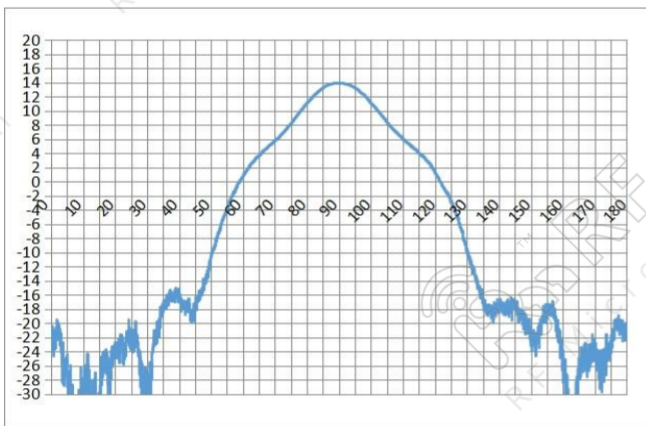
24GHz



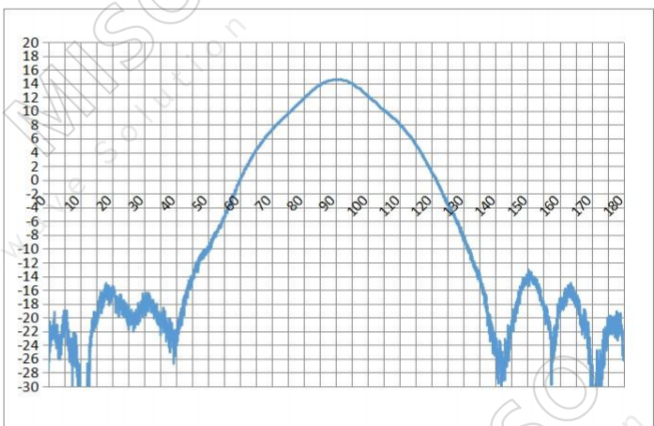
26.5GHz



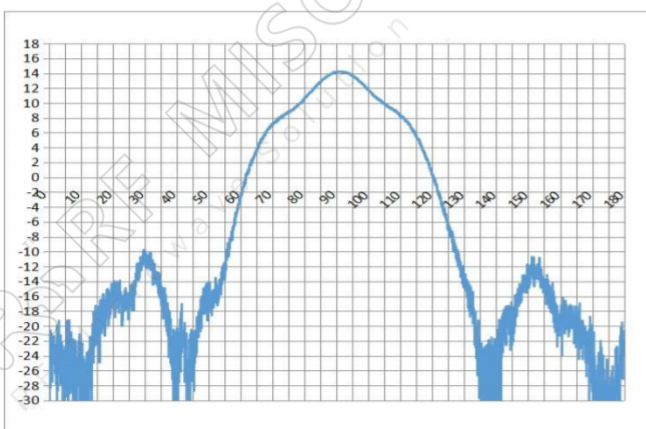
28GHz



32GHz



36GHz



40GHz

