

*Broadband Horn Antenna*  
*12 dBi Typ. Gain, 2-18GHz Frequency Range*

## Broadband Horn Antenna Data Sheet

**RM-BDHA218-12**

### Features

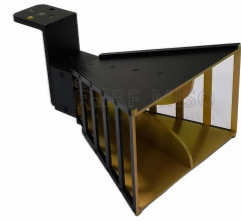
- Ideal for Antenna Measurements
- Linear Polarization
- Broadband Operation
- Small Size

### Description

The **RM-BDHA218-12** is a linear polarized broadband horn antenna that operates in the frequency range of 2 GHz to 18 GHz. The antenna offers a typical gain of 12dBi and low VSWR 1.4:1 with SMA-F connector. The antenna supports linear polarized waveforms. It is suitable for extensive applications such as EMC/EMI testing, surveillance, direction finding, as well as antenna gain and pattern measurements.

### Specifications

RM-BDHA218-12		
Item	Specification	Units
Frequency Range	2-18	GHz
Gain	12 Typ.	dBi
VSWR	1.4:1	
Polarization	Linear	
Connector	SMA-F	
Finishing	Paint	
Material	Al	dB
Size	135*137.1*86.9	mm
Weight	0.324	kg

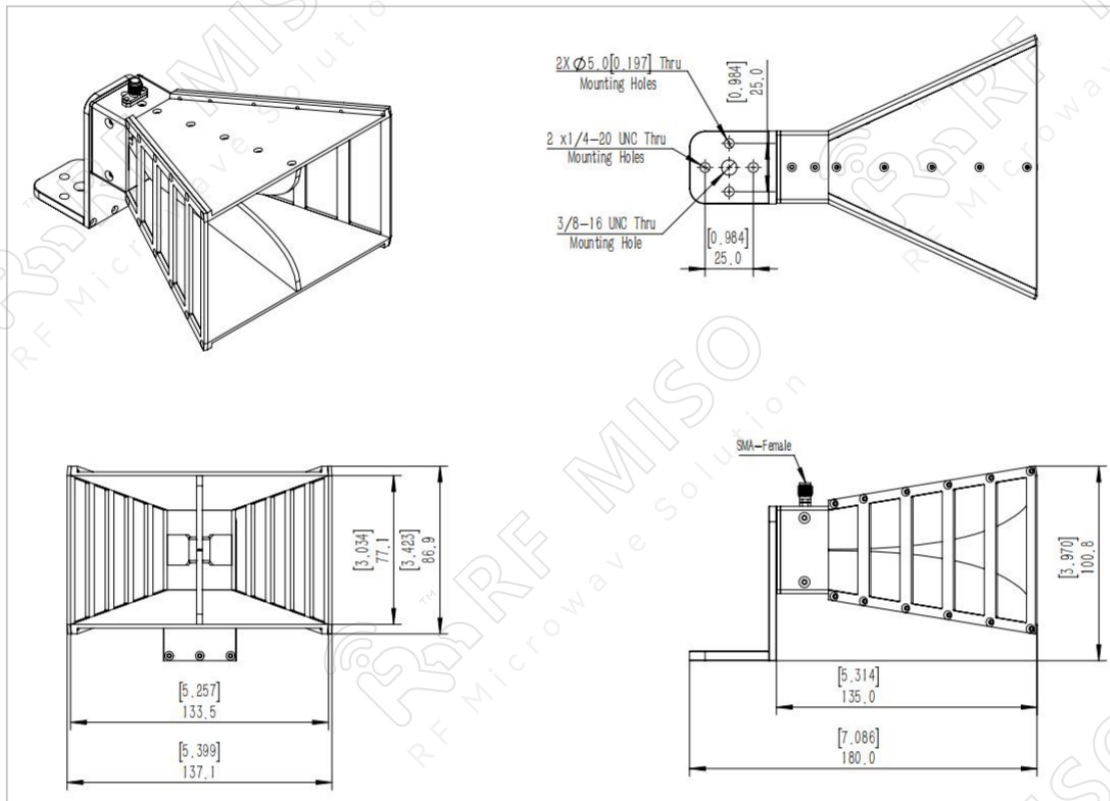


Broadband Horn Antenna  
12 dBi Typ. Gain, 2-18GHz Frequency Range

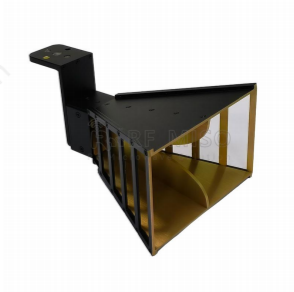
**Broadband Horn Antenna Data Sheet**

**RM-BDHA218-12**

**Outline Drawing**



Broadband Horn Antenna  
12 dBi Typ. Gain, 2-18GHz Frequency Range

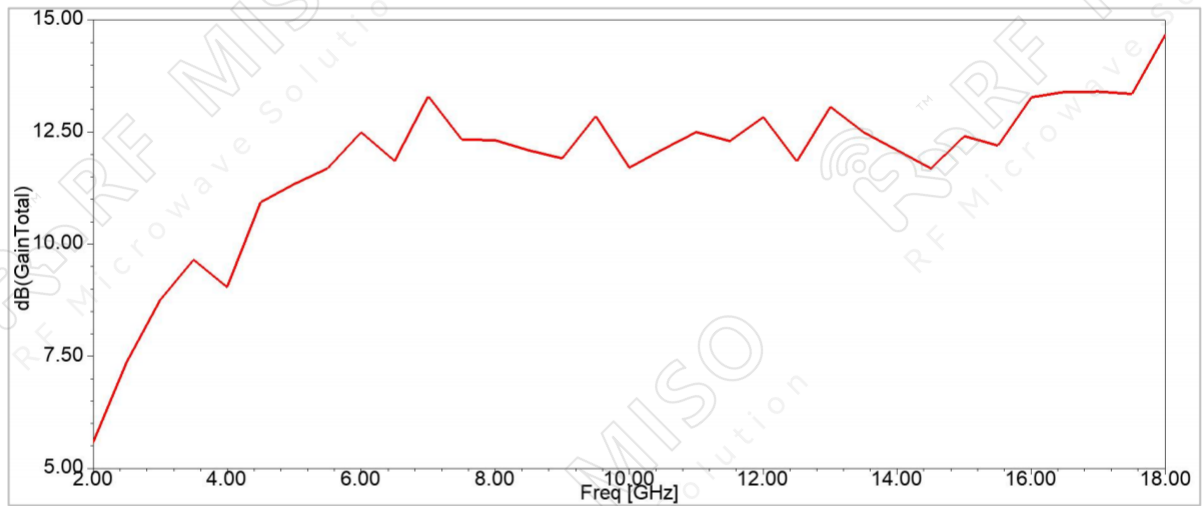


**Broadband Horn Antenna Data Sheet**

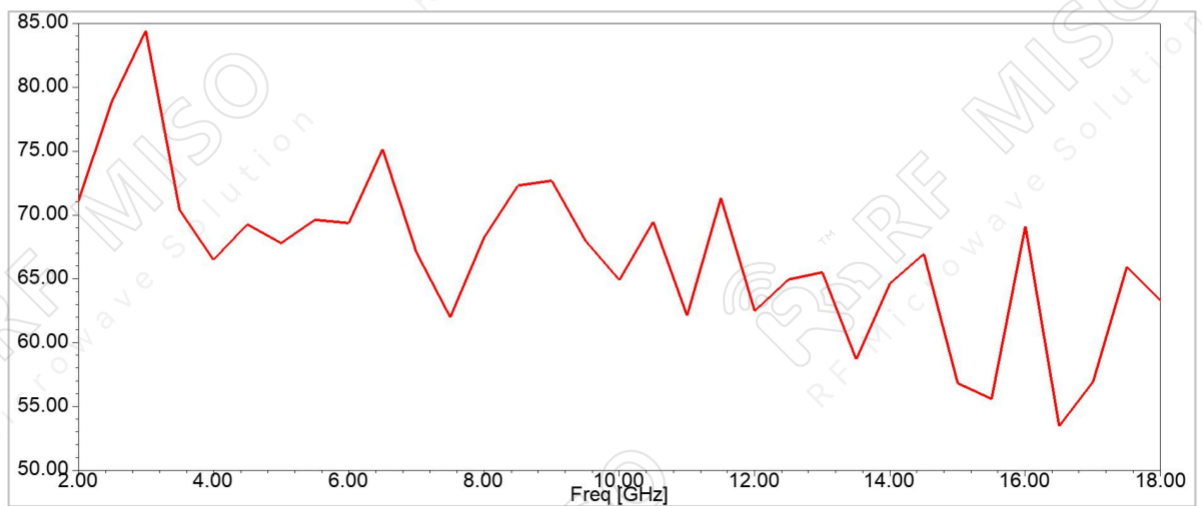
**RM-BDHA218-12**

**Test Results**

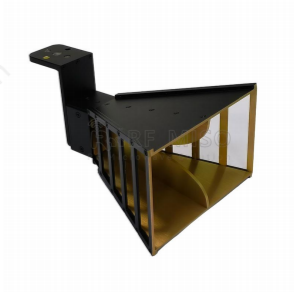
**Gain**



**Cross Polarization**



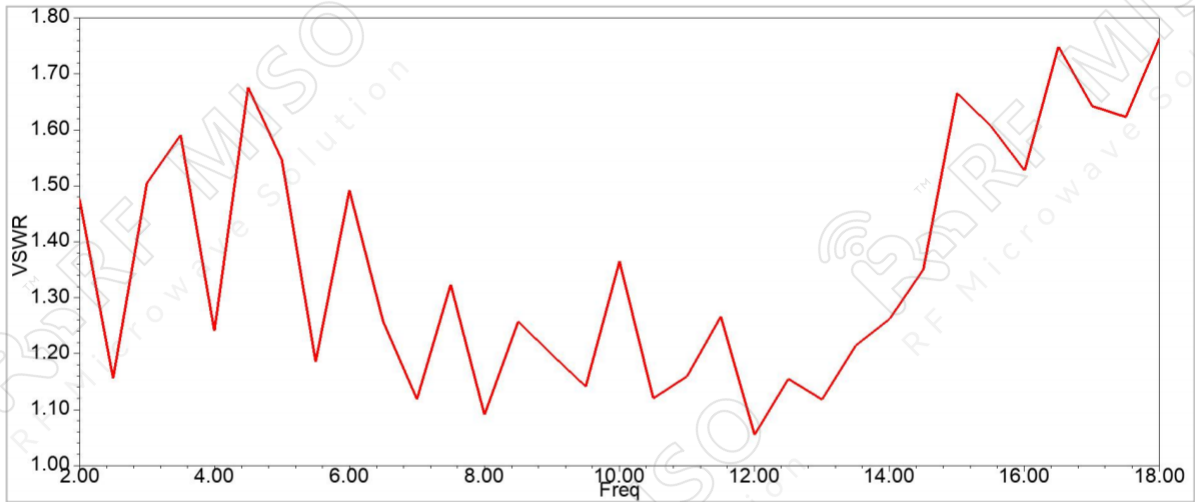
*Broadband Horn Antenna*  
*12 dBi Typ. Gain, 2-18GHz Frequency Range*



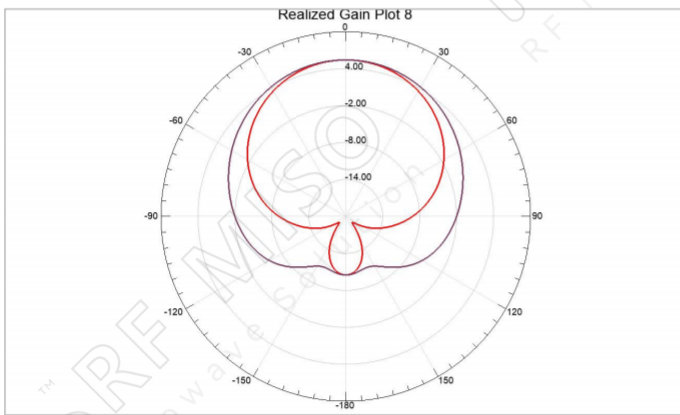
**Broadband Horn Antenna Data Sheet**

**RM-BDHA218-12**

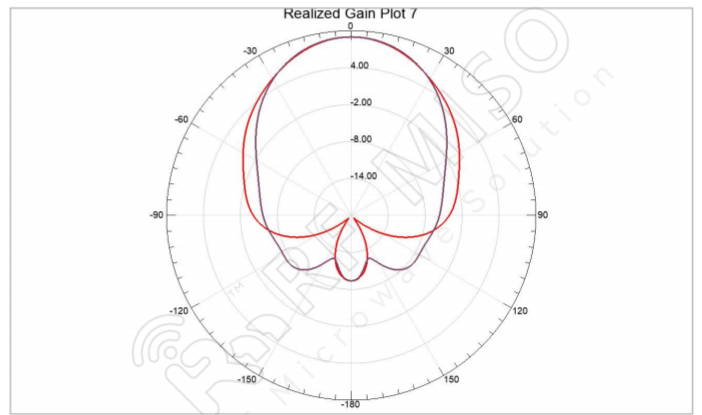
**VSWR**



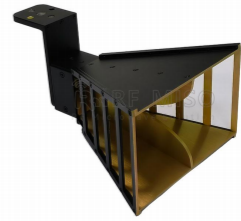
**Pattern**



2GHz



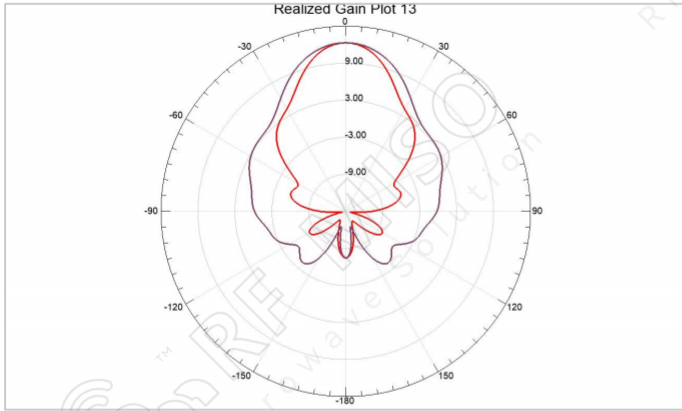
4GHz



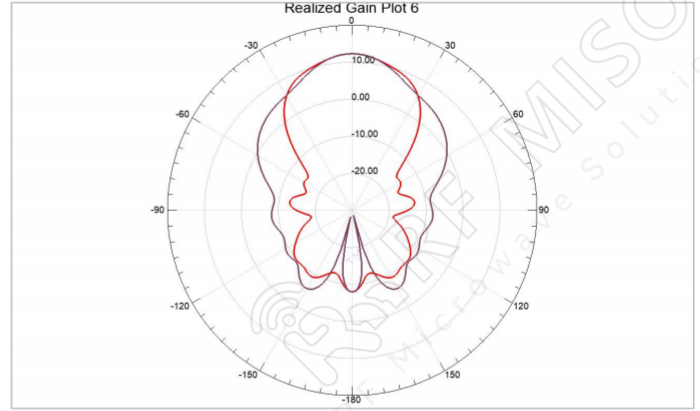
*Broadband Horn Antenna*  
*12 dBi Typ. Gain, 2-18GHz Frequency Range*

**Broadband Horn Antenna Data Sheet**

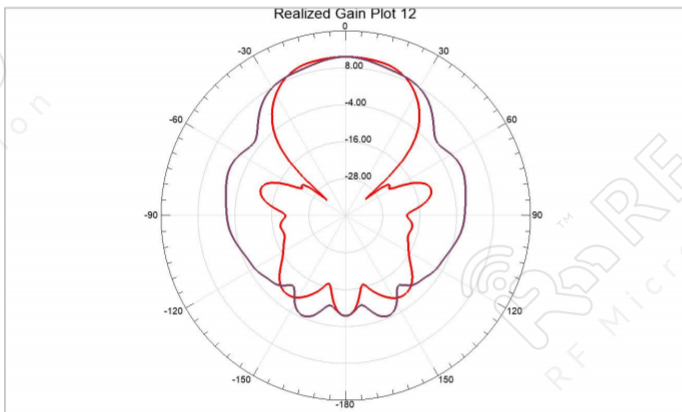
**RM-BDHA218-12**



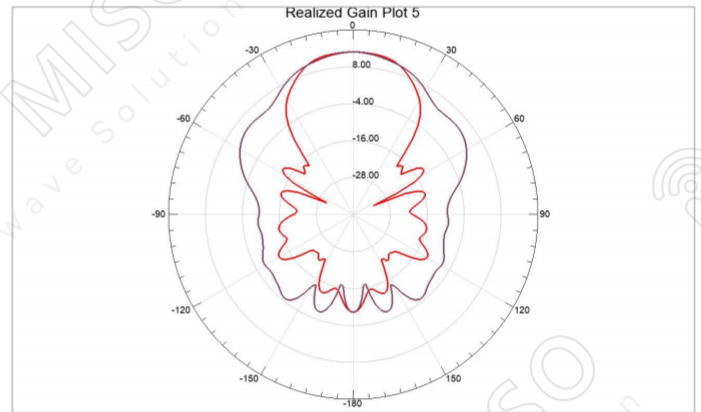
6GHz



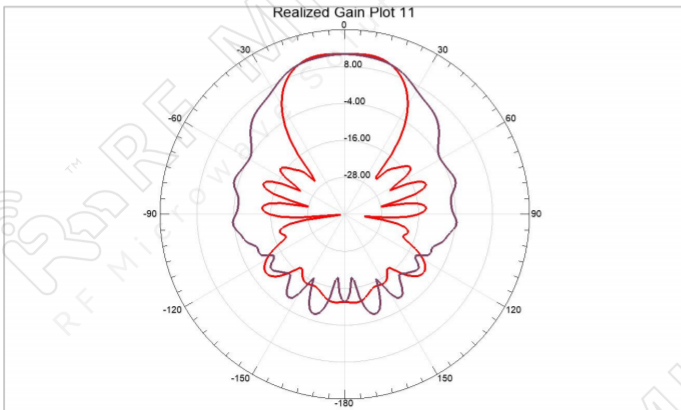
8GHz



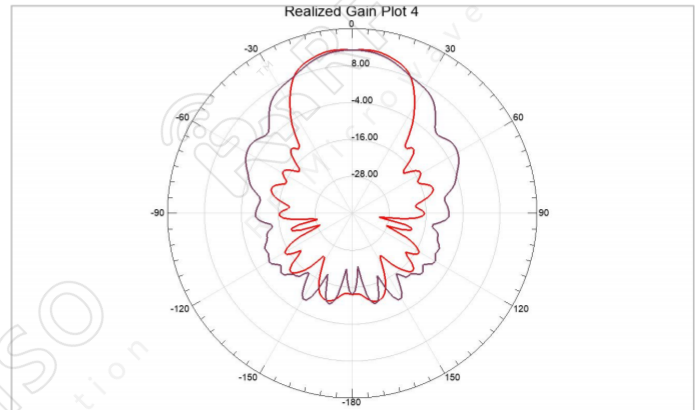
10GHz



12GHz

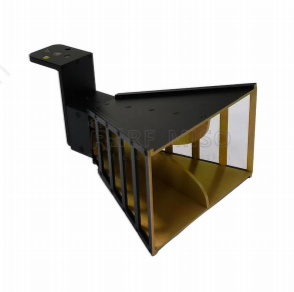


14GHz



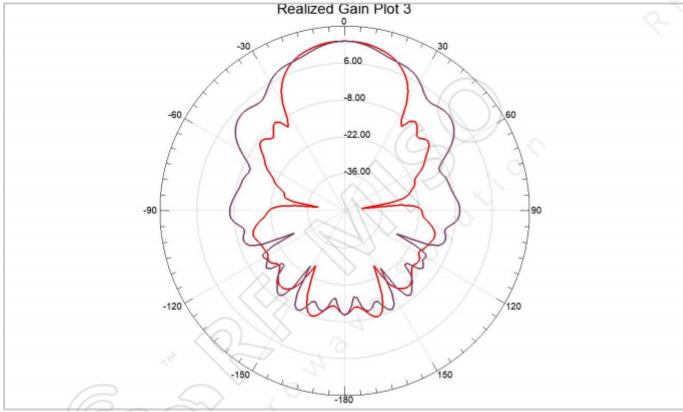
16GHz

Broadband Horn Antenna  
12 dBi Typ. Gain, 2-18GHz Frequency Range



**Broadband Horn Antenna Data Sheet**

**RM-BDHA218-12**



18GHz