

*Broadband Horn Antenna  
13 dBi Typ. Gain, 4-40 GHz Frequency Range*

## Broadband Horn Antenna Data Sheet

**RM-BDHA440-13**

### Features

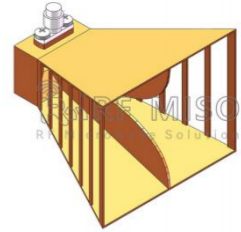
- Ideal for Antenna Measurement
- Low VSWR
- Moderate Gain
- Broadband Operation
- Linear Polarized
- Small Size

### Descriptions

RF MISO's **Model RM-BDHA440-13** is a linear polarized broadband horn antenna that operates from 4 to 40 GHz. The antenna offers a typical gain of 13 dBi and low VSWR 1.5:1 with 2.92-Female connector. The antenna is used for long time trouble-free applications in indoor and outdoor environments. It can be widely used in EMI detection, orientation, reconnaissance, antenna gain and pattern measurement and other applications.

### Specifications

RM-BDHA440-13		
Parameters	Typical	Units
Frequency Range	4-40	GHz
Gain	13 Typ.	dBi
VSWR	1.5 Typ.	
Polarization	Linear	
Connector	2.92-Female/2.4mm-Female	
Treatment	Paint	
Size	58.3*60.4*47.7(L*W*H)	mm
Weight	33	g
Material	Al	

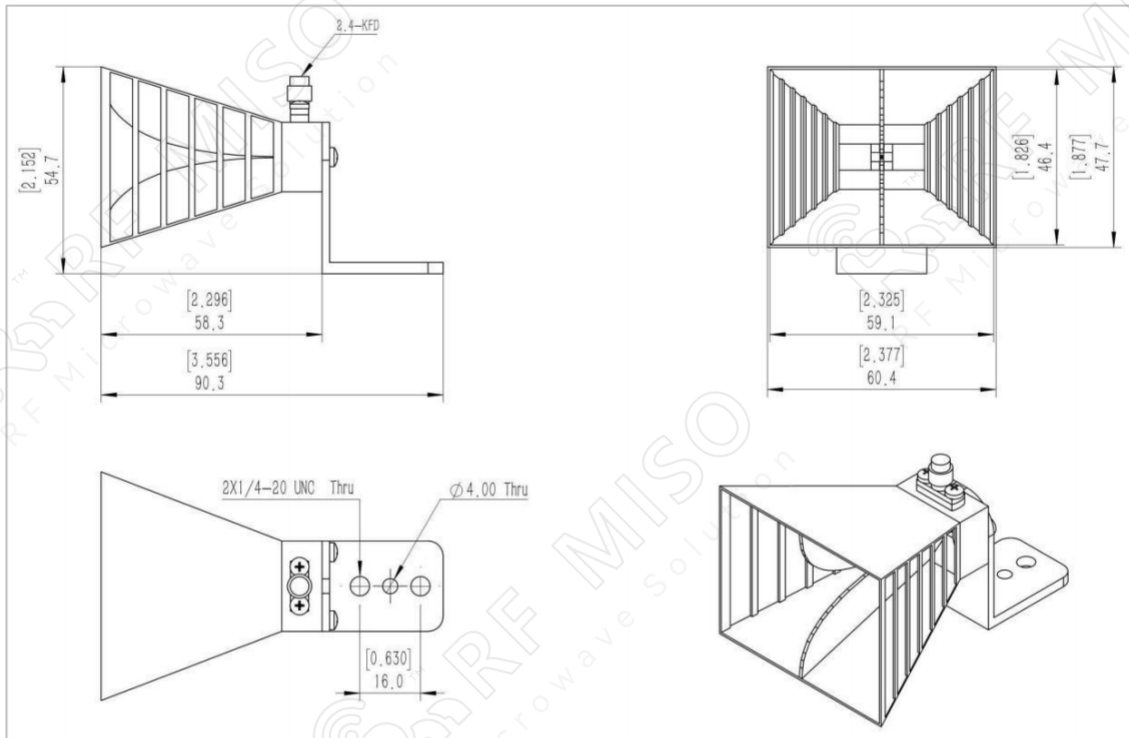


*Broadband Horn Antenna*  
*13 dBi Typ. Gain, 4-40 GHz Frequency Range*

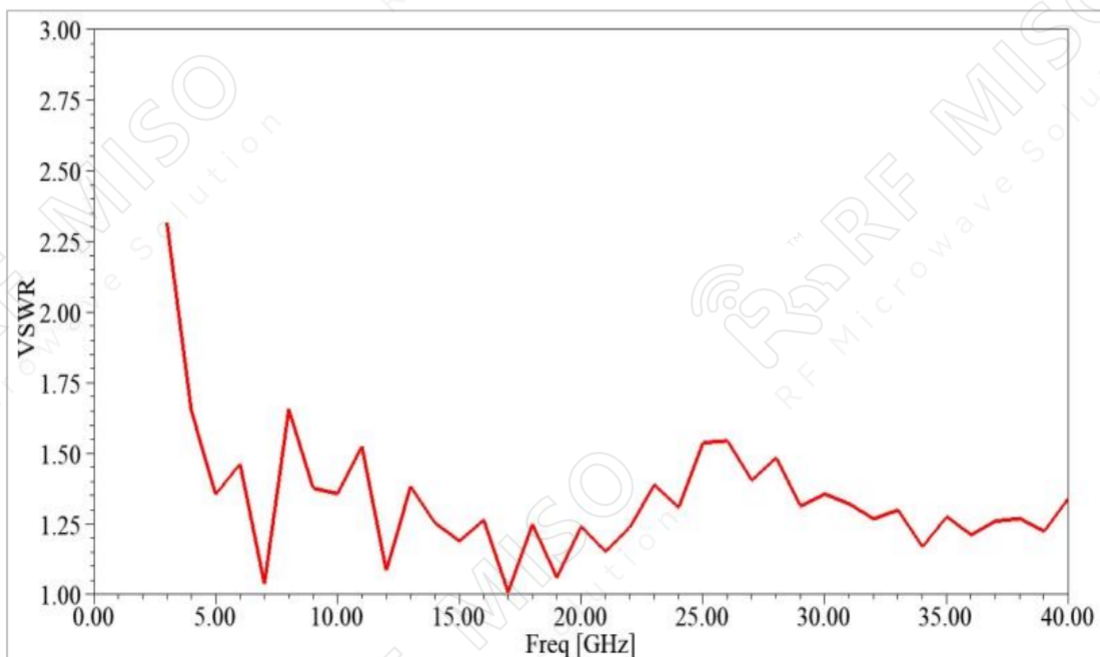
**Broadband Horn Antenna Data Sheet**

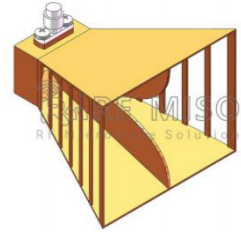
**RM-BDHA440-13**

**Mechanical Drawing**



**Simulation Result**



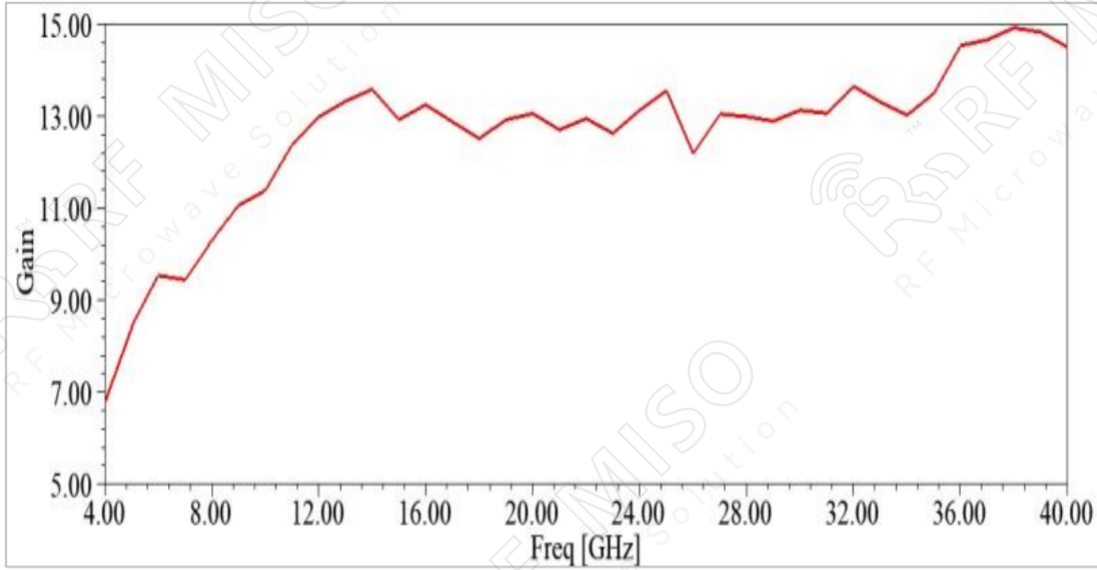


*Broadband Horn Antenna*  
*13 dBi Typ. Gain, 4-40 GHz Frequency Range*

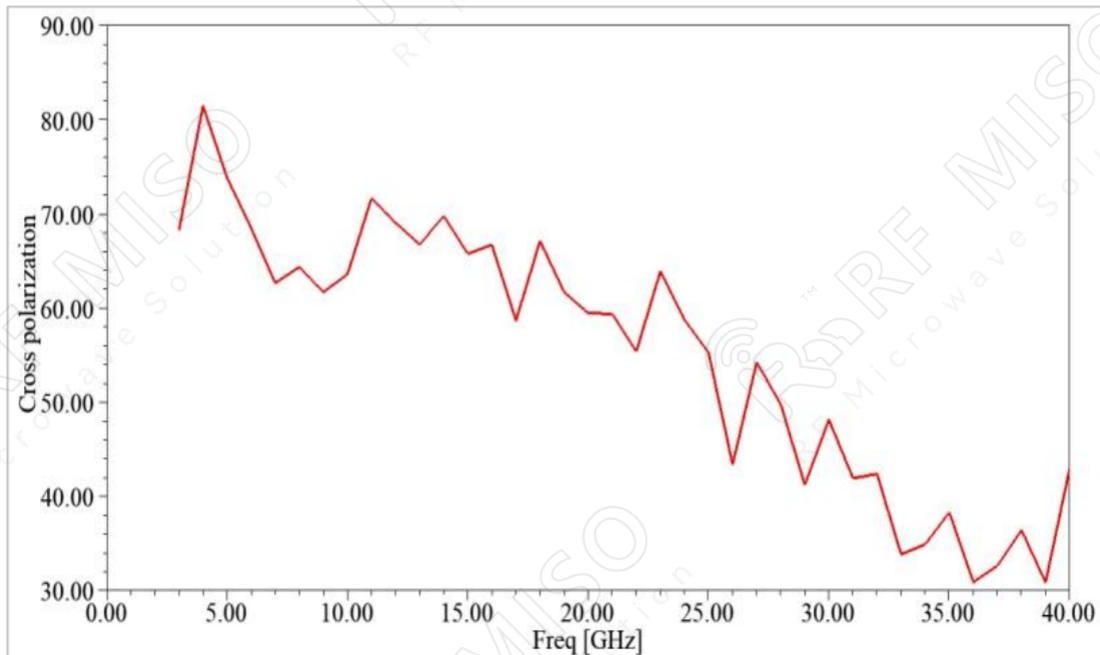
**Broadband Horn Antenna Data Sheet**

**RM-BDHA440-13**

Gain



Cross Polarization





**Broadband Horn Antenna**  
13 dBi Typ. Gain, 4-40 GHz Frequency Range

**Broadband Horn Antenna Data Sheet**

**RM-BDHA440-13**

**Gain Pattern**

