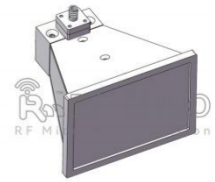


*Broadband Horn Antenna
10 dBi Typ. Gain, 6-18 GHz Frequency Range*



Broadband Horn Antenna Data Sheet

RM-BDHA618-10

Features

- Ideal for Antenna Measurements
- Low VSWR
- Moderate Gain
- Broadband Operation
- Linear Polarization
- Small Size

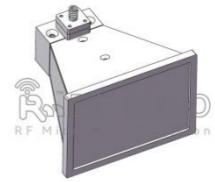
Descriptions

RF MISO's **Model RM-BDHA618-10** is a linear polarized double ridge horn antenna that operates from 6 to 18 GHz. The antenna offers a typical gain of 10 dBi and low VSWR 1.5:1 with SMA-KFD connector. The antenna is used for long time trouble-free applications in indoor and outdoor environments. It can be widely used in EMI detection, orientation, reconnaissance, antenna gain and pattern measurement and other applications.

Specifications

RM-BDHA618-10		
Parameters	Typical	Units
Frequency Range	6-18	GHz
Gain	10 Typ.	dBi
VSWR	1.5 Typ.	
Polarization	Linear	
Connector	SMA-KFD	
Power	50 Max	CW
Material	Al	
Surface Treatment	Paint	
Size	52.2*54*38(L*W*H)	mm
Weight	50	g

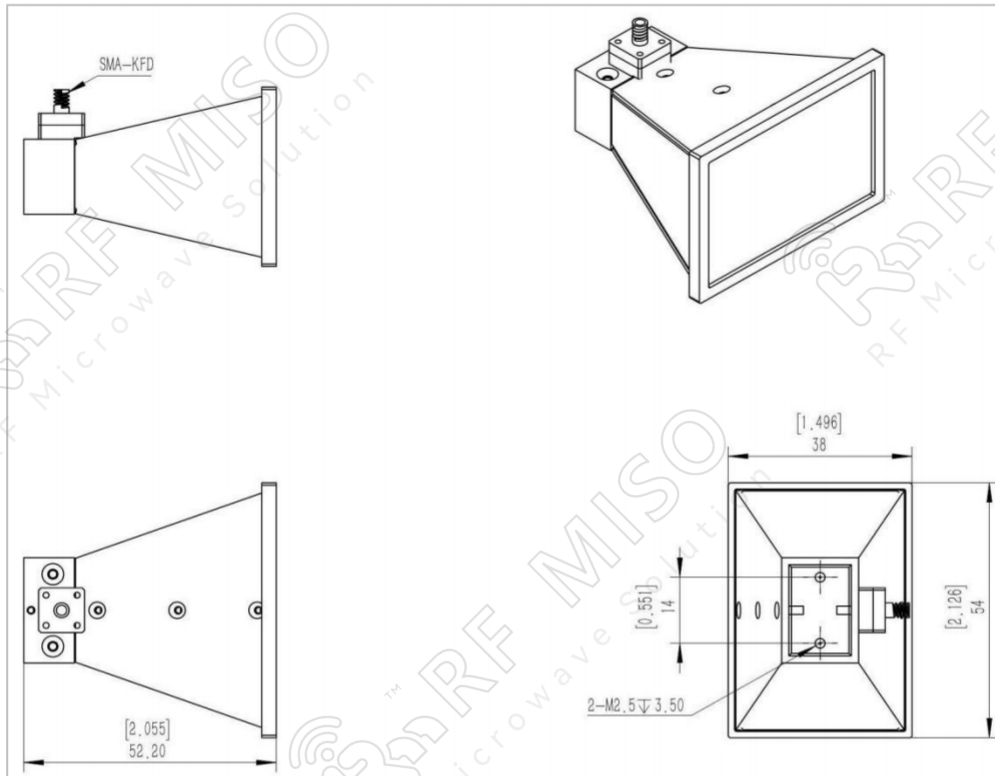
Broadband Horn Antenna
10 dBi Typ. Gain, 6-18 GHz Frequency Range



Broadband Horn Antenna Data Sheet

RM-BDHA618-10

Outline Drawing

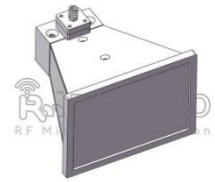


Test Result

VSWR

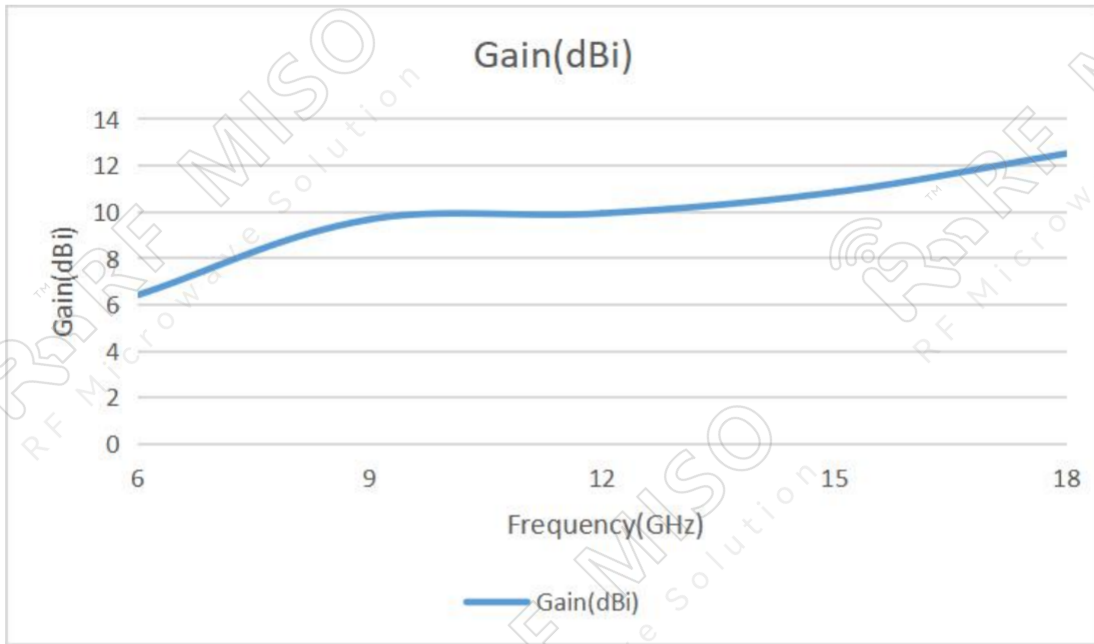


Broadband Horn Antenna
10 dBi Typ. Gain, 6-18 GHz Frequency Range

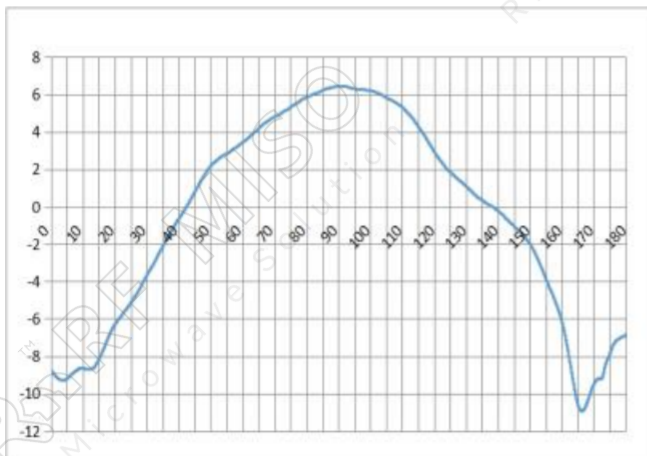


Broadband Horn Antenna Data Sheet

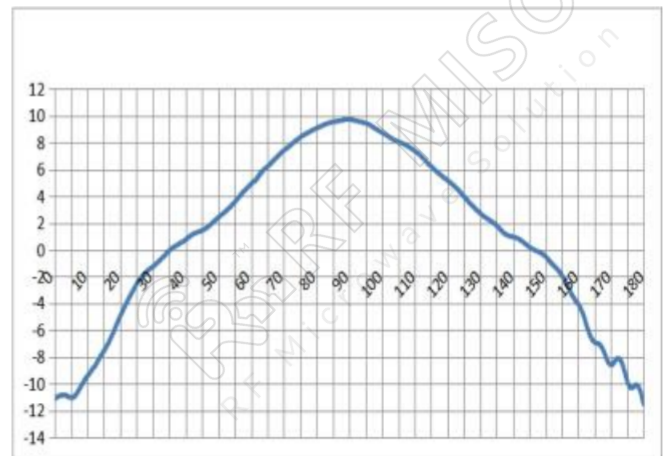
RM-BDHA618-10



Gain Pattern

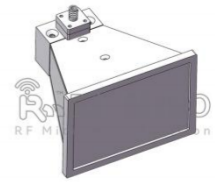


6GHz



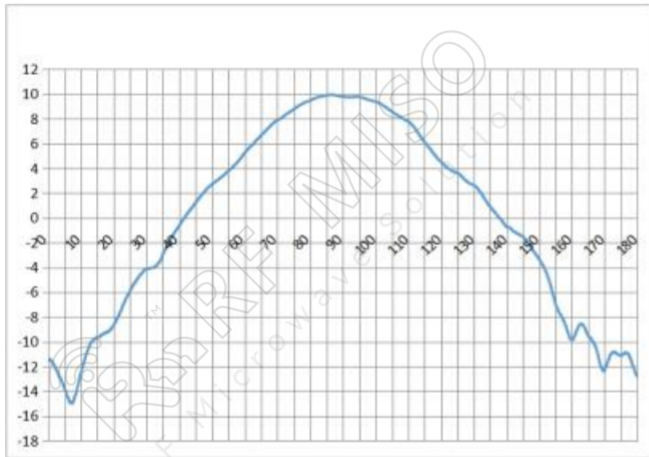
9GHz

Broadband Horn Antenna
10 dBi Typ. Gain, 6-18 GHz Frequency Range

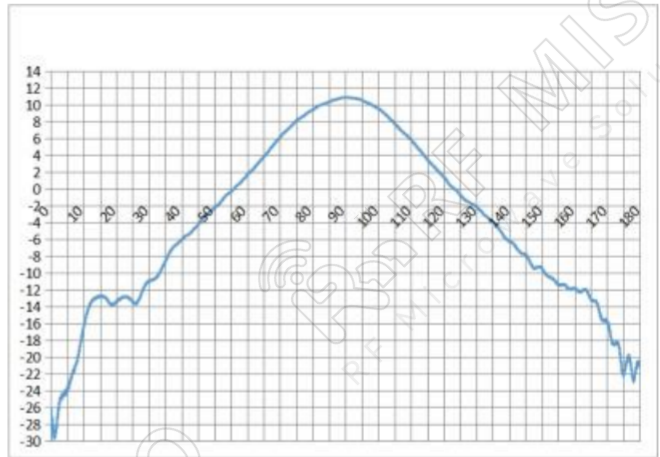


Broadband Horn Antenna Data Sheet

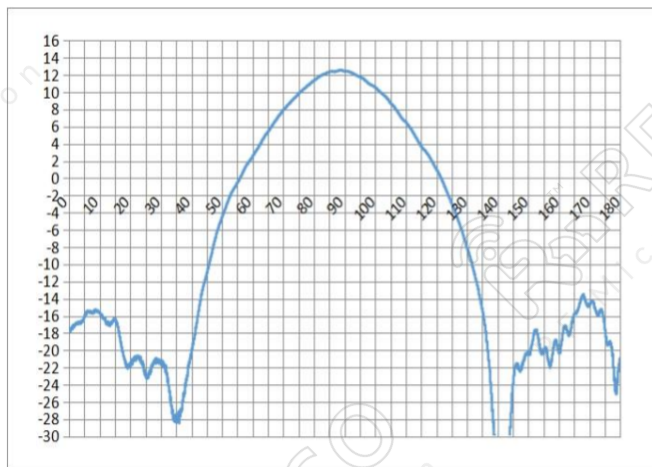
RM-BDHA618-10



12GHz



15GHz



18GHz