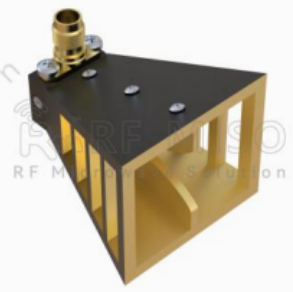


*Broadband Horn Antenna*  
*13 dBi Typ.Gain, 6 GHz-67 GHz Frequency Range*



**RM-BDHA667-13**

**Broadband Horn Antenna Data Sheet**

**Features**

- Double-Ridge Waveguide
- Linear Polarization
- N Female Connector
- Mounting Bracket Included

**Description**

The **RM-BDHA667-13** from RF MISO is a broadband gain horn antenna that operates from 6 to 67GHz. The antenna offers a typical gain of 13 dBi and VSWR1.5:1 with a 1.85mm Female coaxial connector. Featuring high-power handling capability, low loss, high directivity and near constant electrical performance, the antenna is used in a variety of applications such as microwave testing, satellite antenna testing, direction finding, surveillance, plus EMC and antenna measurements.

**Specifications**

<b>RM-BDHA667-13</b>		
Item	Specification	Units
Frequency Range	6-67	GHz
Gain	13 Typ.	dBi
VSWR	1.5:1 Typ.	
Polarization	Linear	
Connector	1.85mm-F	
Material	Al	
Surface Treatment	Paint	
Size	40.06*35.81*43.60	mm

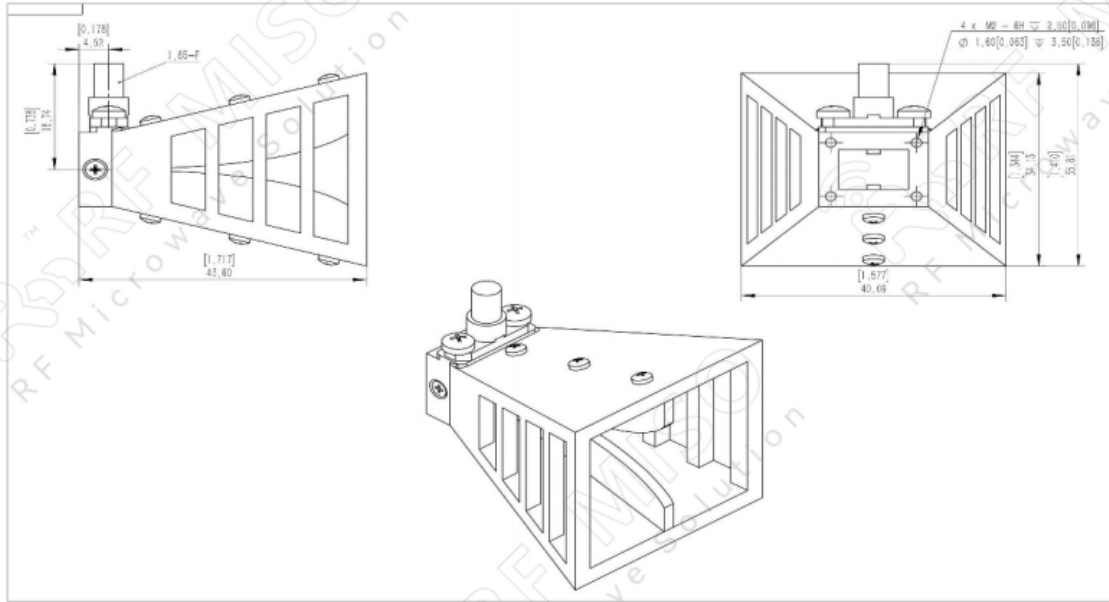
*Broadband Horn Antenna*  
*13 dBi Typ. Gain, 6 GHz-67 GHz Frequency Range*

**Broadband Horn Antenna Data Sheet**

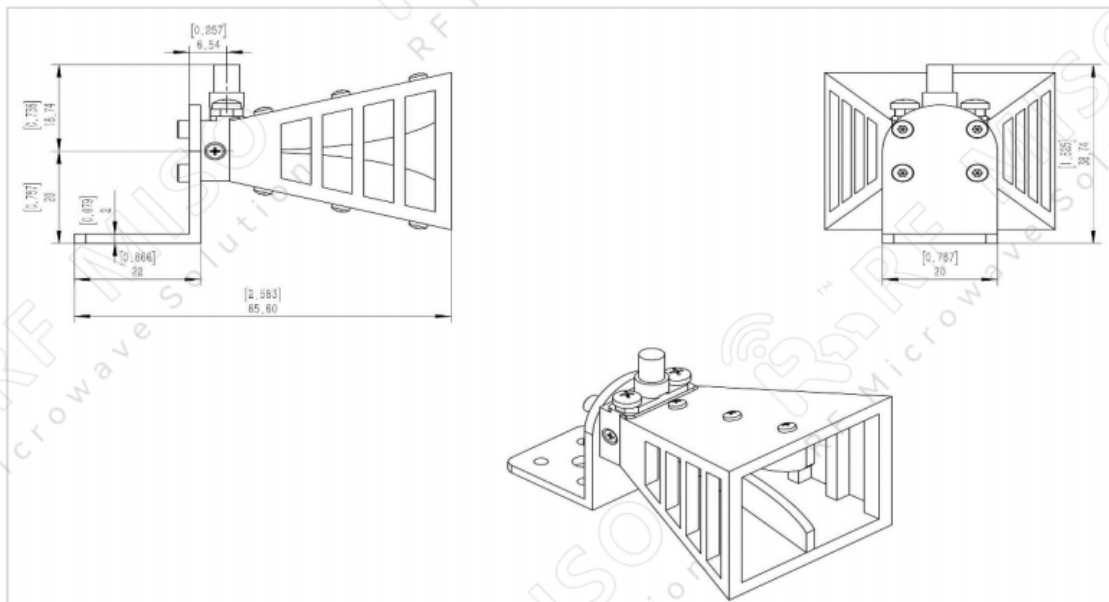
**RM-BDHA667-13**



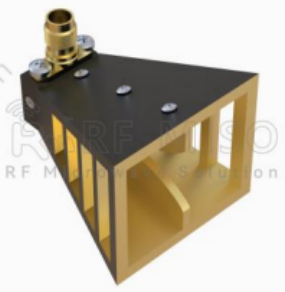
**Outline Drawing (Size: mm)**



Outline Drawing with Mounting Bracket:



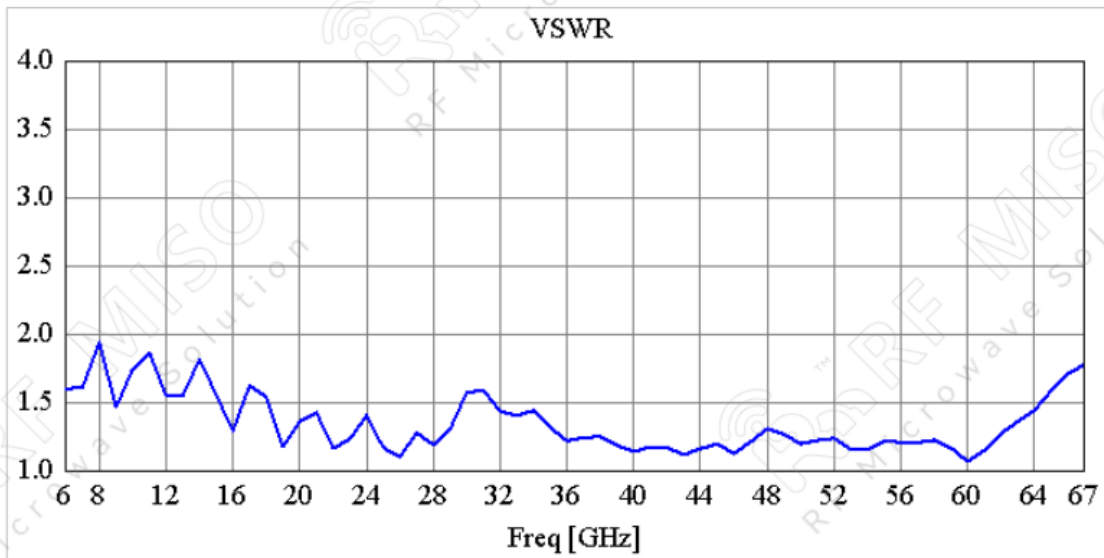
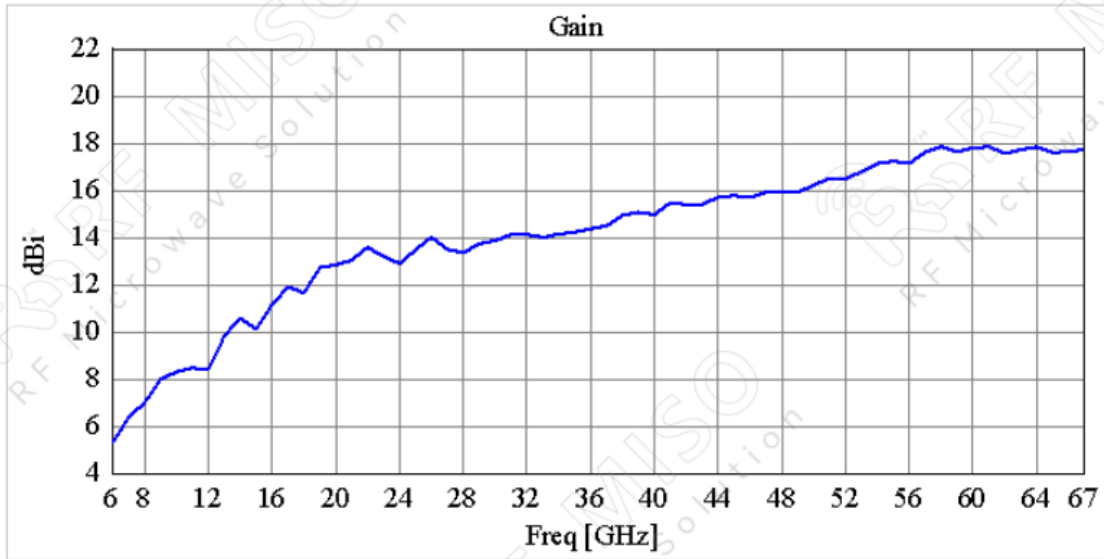
Broadband Horn Antenna  
13 dBi Typ. Gain, 6 GHz-67 GHz Frequency Range



**Broadband Horn Antenna Data Sheet**

**RM-BDHA667-13**

**Simulated Data**

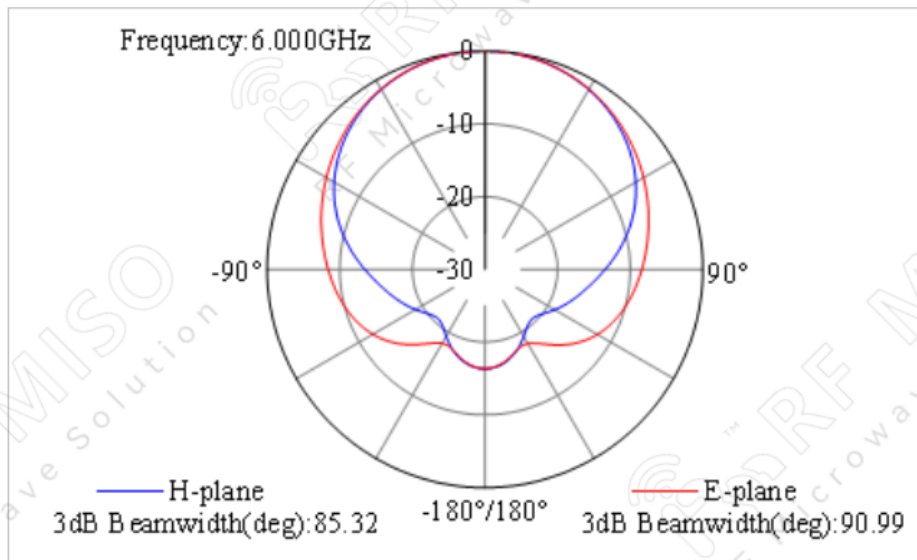
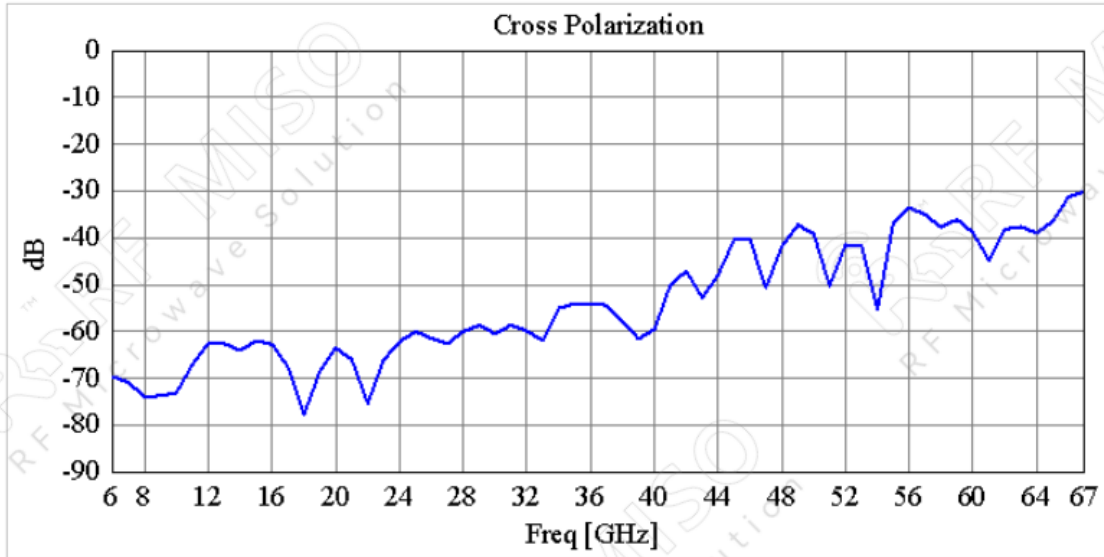


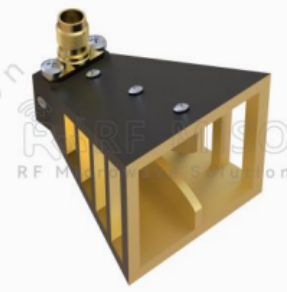


*Broadband Horn Antenna*  
*13 dBi Typ.Gain, 6 GHz-67 GHz Frequency Range*

**Broadband Horn Antenna Data Sheet**

**RM-BDHA667-13**

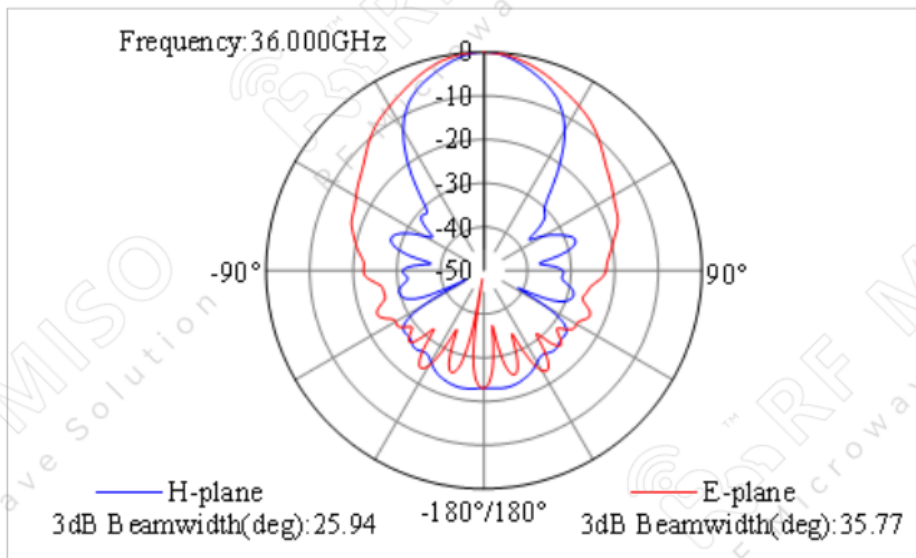
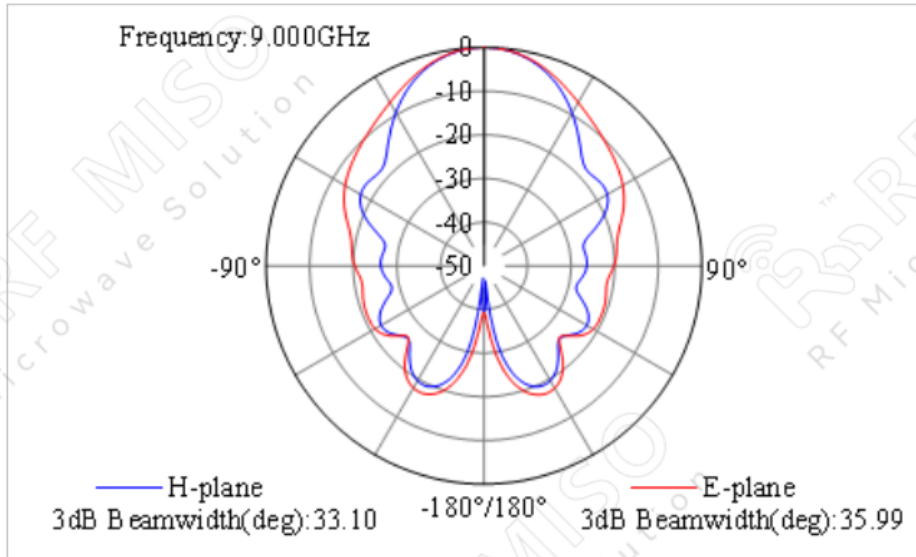




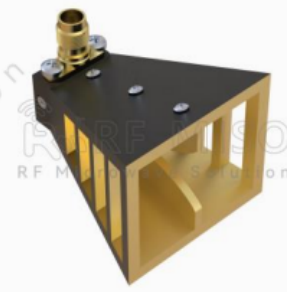
*Broadband Horn Antenna*  
*13 dBi Typ.Gain, 6 GHz-67 GHz Frequency Range*

**Broadband Horn Antenna Data Sheet**

**RM-BDHA667-13**







*Broadband Horn Antenna*  
*13 dBi Typ.Gain, 6 GHz-67 GHz Frequency Range*

**Broadband Horn Antenna Data Sheet**

**RM-BDHA667-13**

