

*Broadband Dual Polarized Horn Antenna  
 15dBi Typ. Gain, 18-40GHz Frequency Range*

## Broadband Dual Polarized Horn Antenna Data Sheet

**RM-BDPHA1840-15B**

### Features

- Ideal for Antenna Measurements
- Dual Polarization
- Broadband Operation
- Small Size

### Description

The **RM-BDPHA1840-15B** is a dual polarized broadband horn antenna that operates in the frequency range of 18GHz to 40GHz. The antenna offers a typical gain of 15dBi and VSWR 1.5:1 with 2.4mm connector. The antenna is a dual polarized antenna and is suitable for extensive applications such as EMC/EMI testing, surveillance, direction finding, as well as antenna gain and pattern measurements.

### Specifications

<b>RM-BDPHA1840-15B</b>		
Item	Specification	Units
Frequency Range	18-40	GHz
Gain	15 Typ.	dBi
VSWR	1.5:1 Typ.	
Polarization	Dual	
3dB Beamwidth	E plane: 21-39	deg
	H plane: 15-39	
Cross Polarization Isolation	23 Typ.	dB
Port to Port Isolation	20-30	dB
Connector	2.4mm-KFD	
Size	63.5*35.2*35.2	mm
Material	Al	
Weight	0.052	Kg

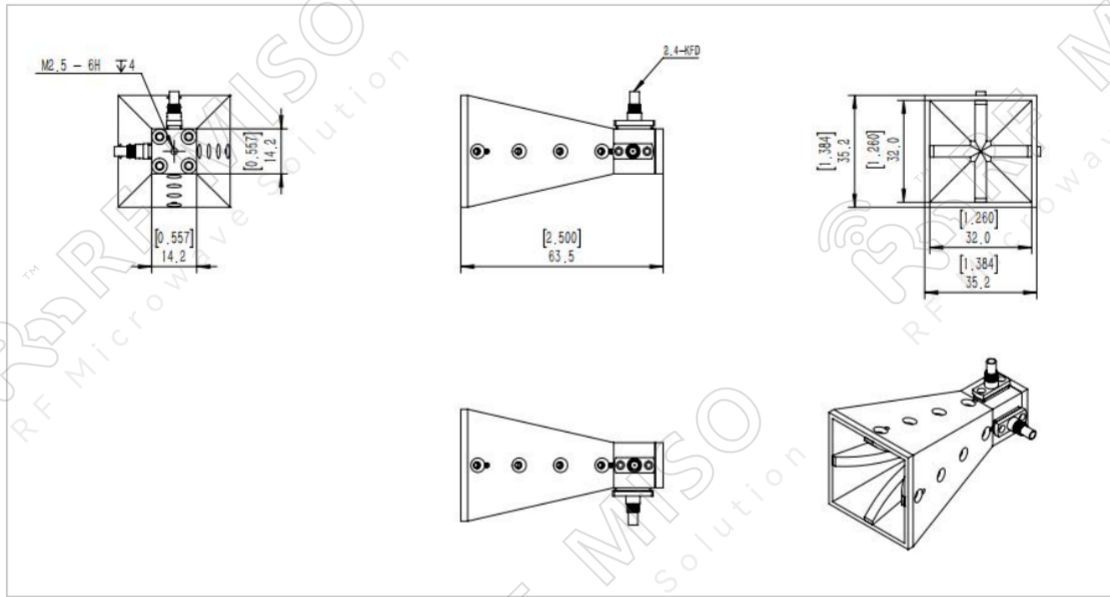


Broadband Dual Polarized Horn Antenna  
15dBi Typ. Gain, 18-40GHz Frequency Range

**Broadband Dual Polarized Horn Antenna Data Sheet**

**RM-BDPHA1840-15B**

**Outline Drawing**



**Test Results**

**Gain**

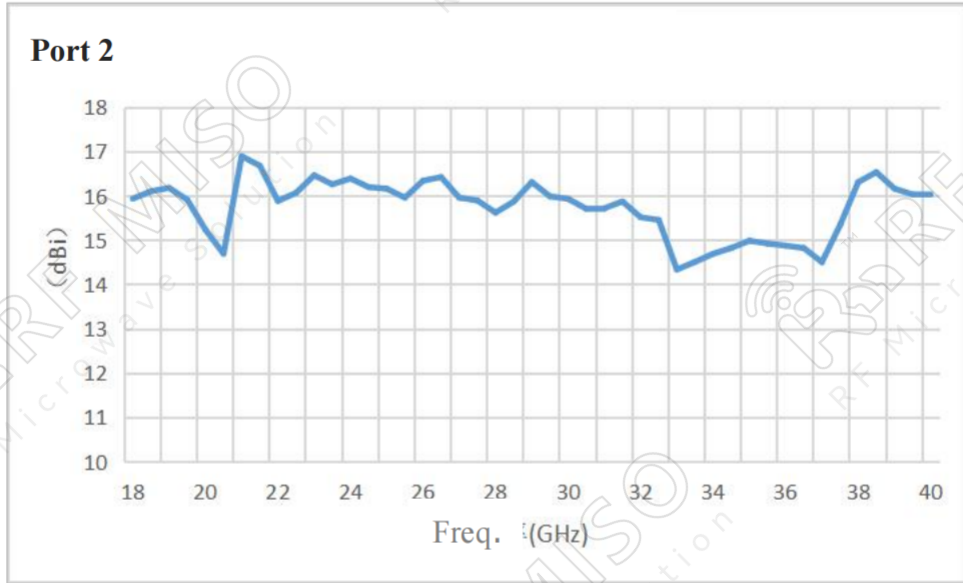




*Broadband Dual Polarized Horn Antenna  
15dBi Typ. Gain, 18-40GHz Frequency Range*

**Broadband Dual Polarized Horn Antenna Data Sheet**

**RM-BDPHA1840-15B**



**Cross Polarization Isolation**

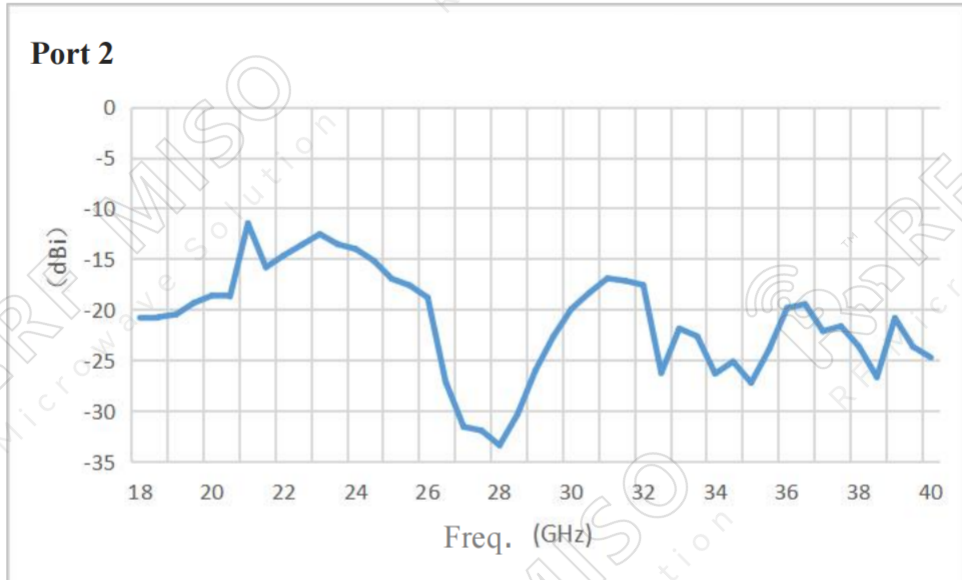




*Broadband Dual Polarized Horn Antenna  
 15dBi Typ. Gain, 18-40GHz Frequency Range*

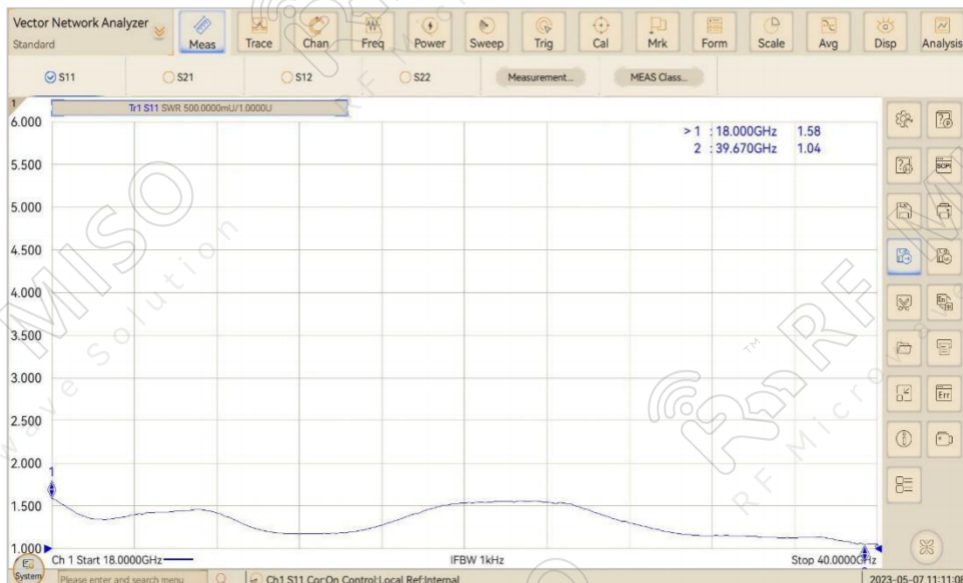
## Broadband Dual Polarized Horn Antenna Data Sheet

**RM-BDPHA1840-15B**



## VSWR

### Port 1



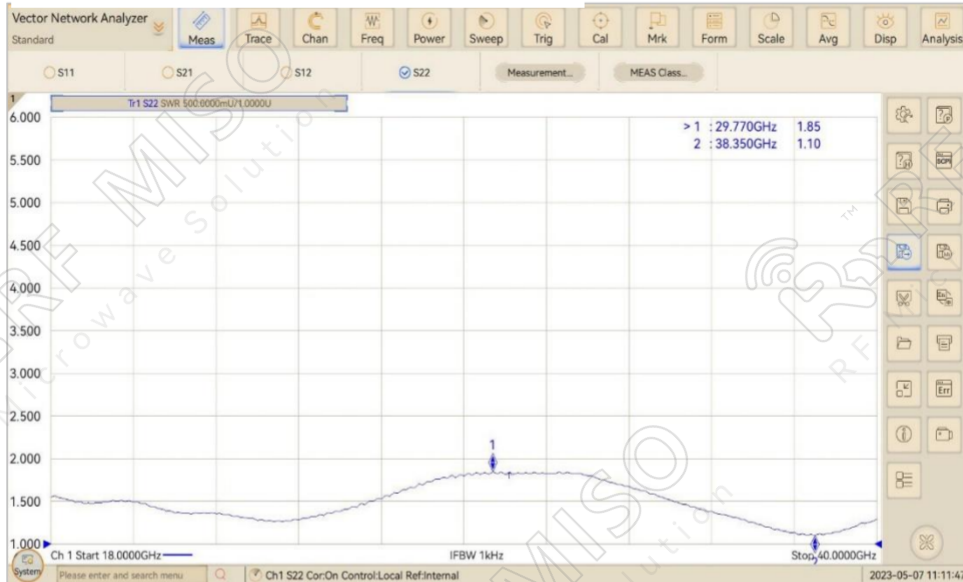


*Broadband Dual Polarized Horn Antenna  
15dBi Typ. Gain, 18-40GHz Frequency Range*

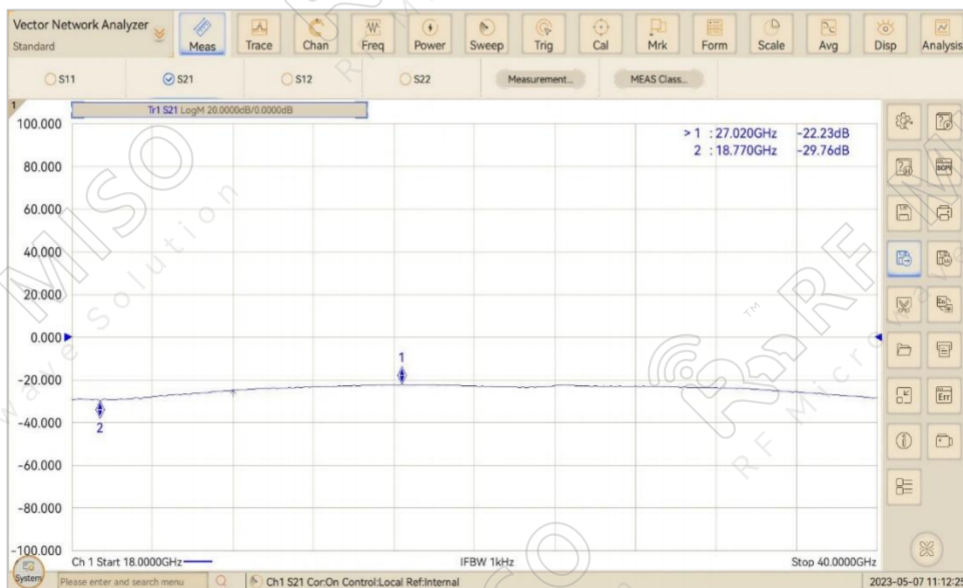
**Broadband Dual Polarized Horn Antenna Data Sheet**

**RM-BDPHA1840-15B**

**Port 2**



**Port to Port Isolation**





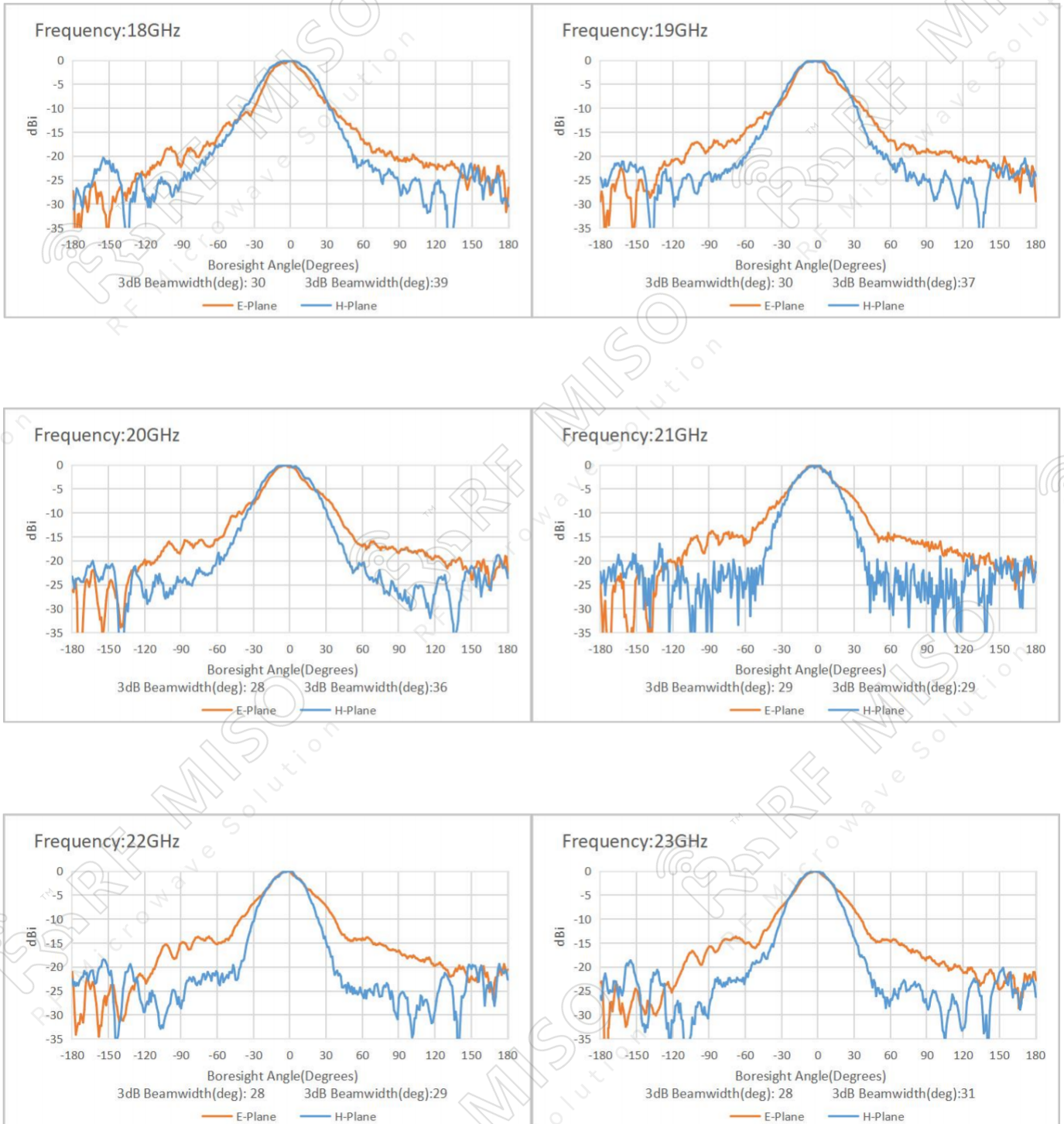
*Broadband Dual Polarized Horn Antenna  
15dBi Typ. Gain, 18-40GHz Frequency Range*

**Broadband Dual Polarized Horn Antenna Data Sheet**

**RM-BDPHA1840-15B**

**Pattern**

**Port 1**

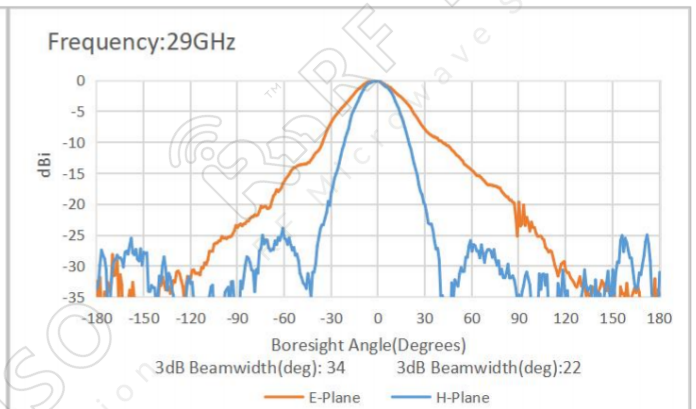
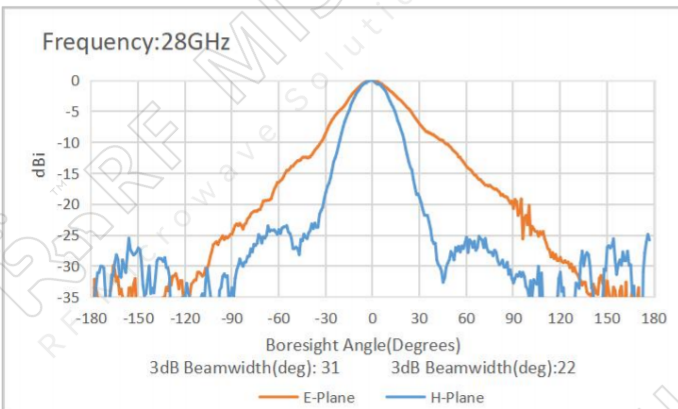
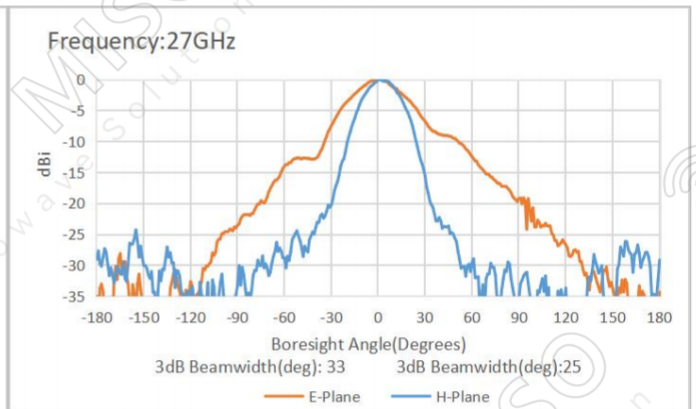
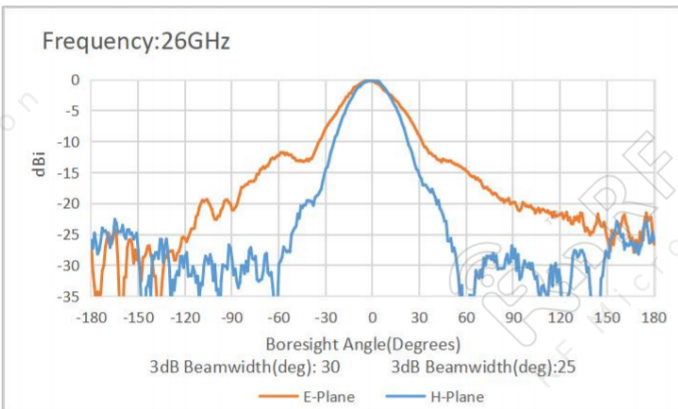
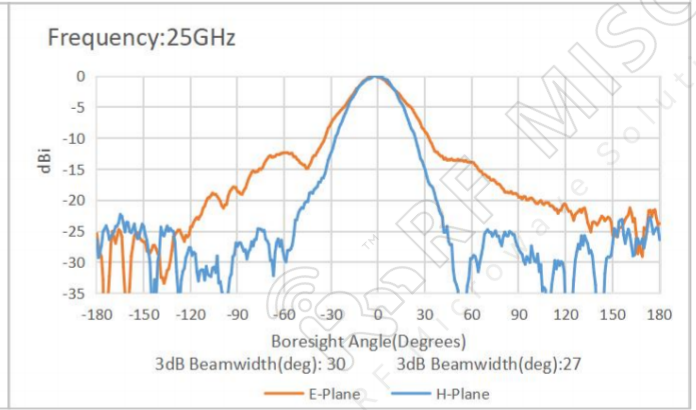
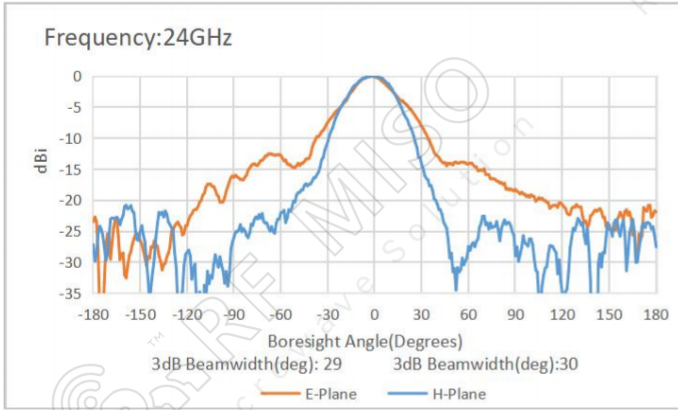




*Broadband Dual Polarized Horn Antenna  
15dBi Typ. Gain, 18-40GHz Frequency Range*

**Broadband Dual Polarized Horn Antenna Data Sheet**

**RM-BDPHA1840-15B**

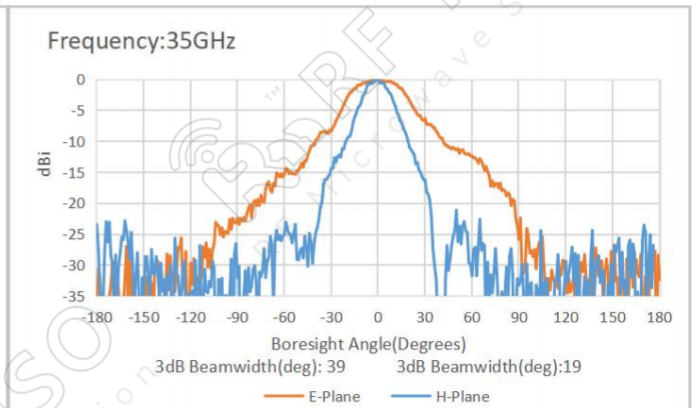
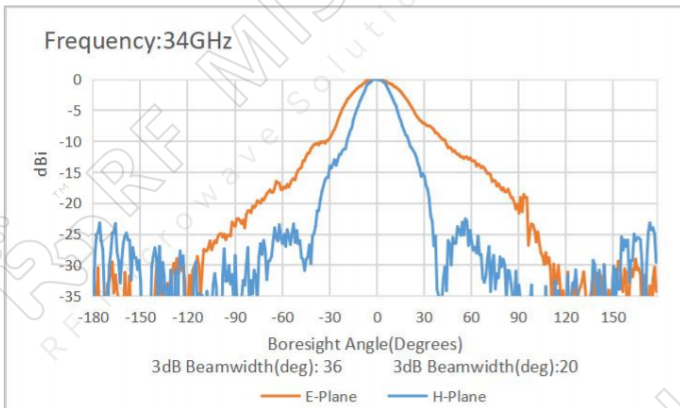
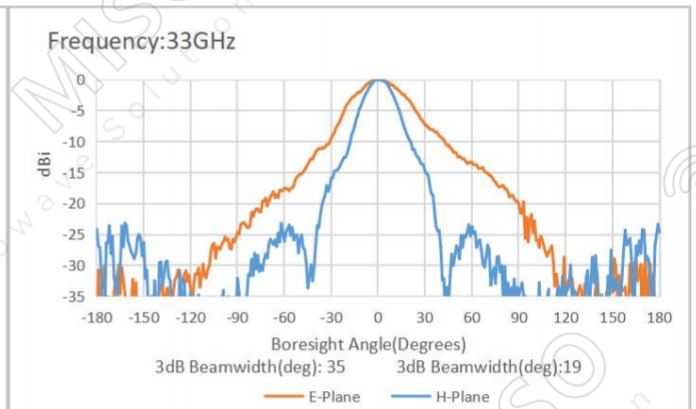
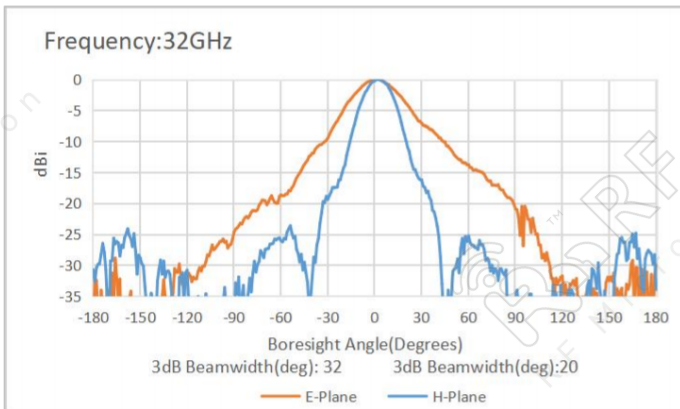
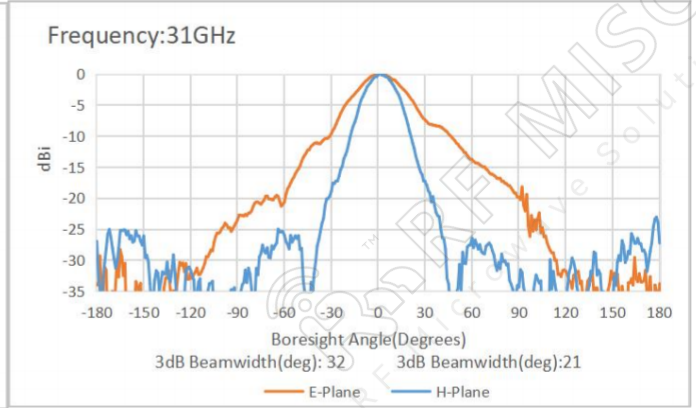
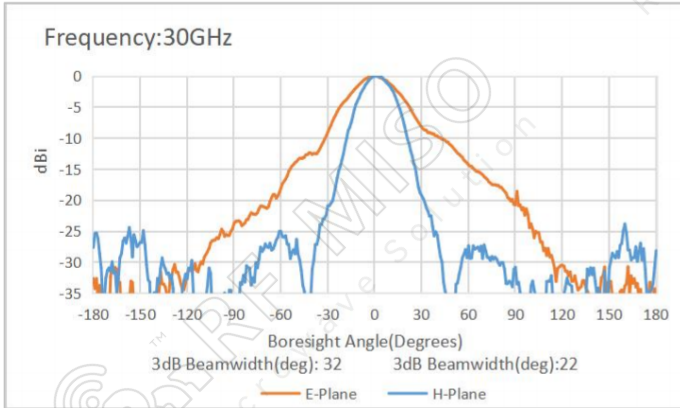




*Broadband Dual Polarized Horn Antenna  
15dBi Typ. Gain, 18-40GHz Frequency Range*

**Broadband Dual Polarized Horn Antenna Data Sheet**

**RM-BDPHA1840-15B**



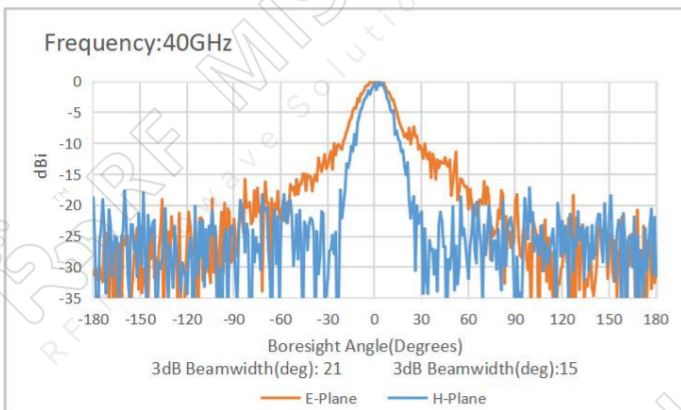
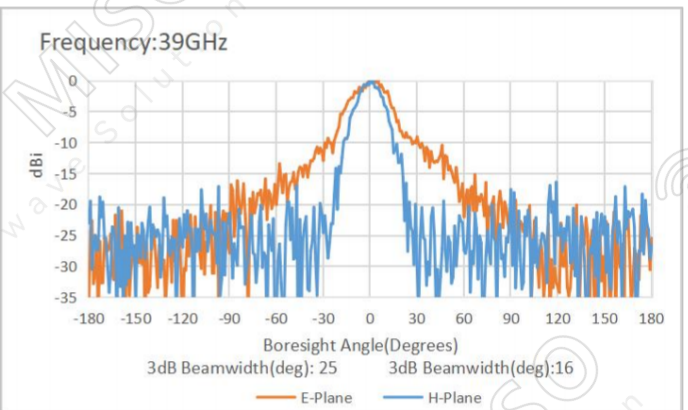
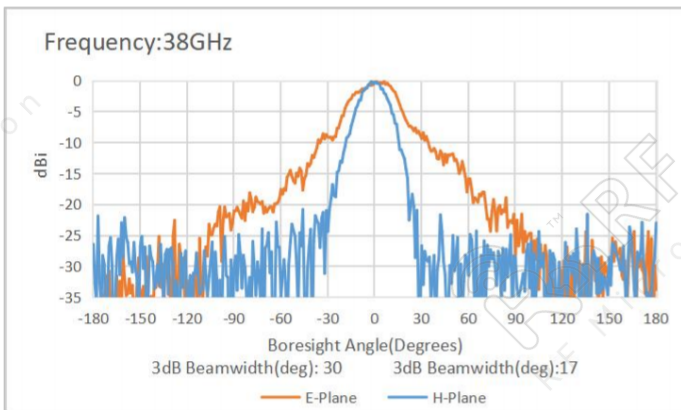
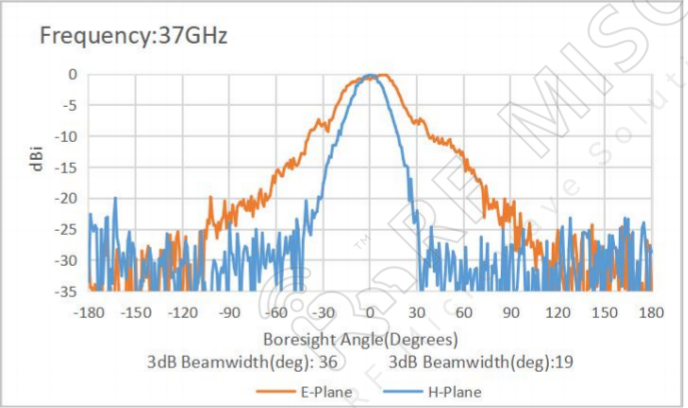
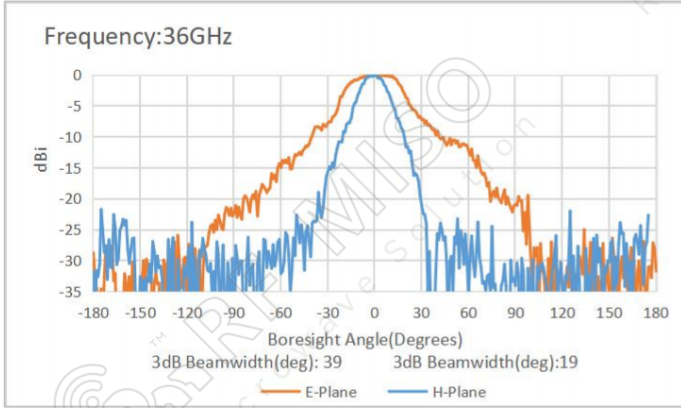




*Broadband Dual Polarized Horn Antenna  
15dBi Typ. Gain, 18-40GHz Frequency Range*

**Broadband Dual Polarized Horn Antenna Data Sheet**

**RM-BDPHA1840-15B**



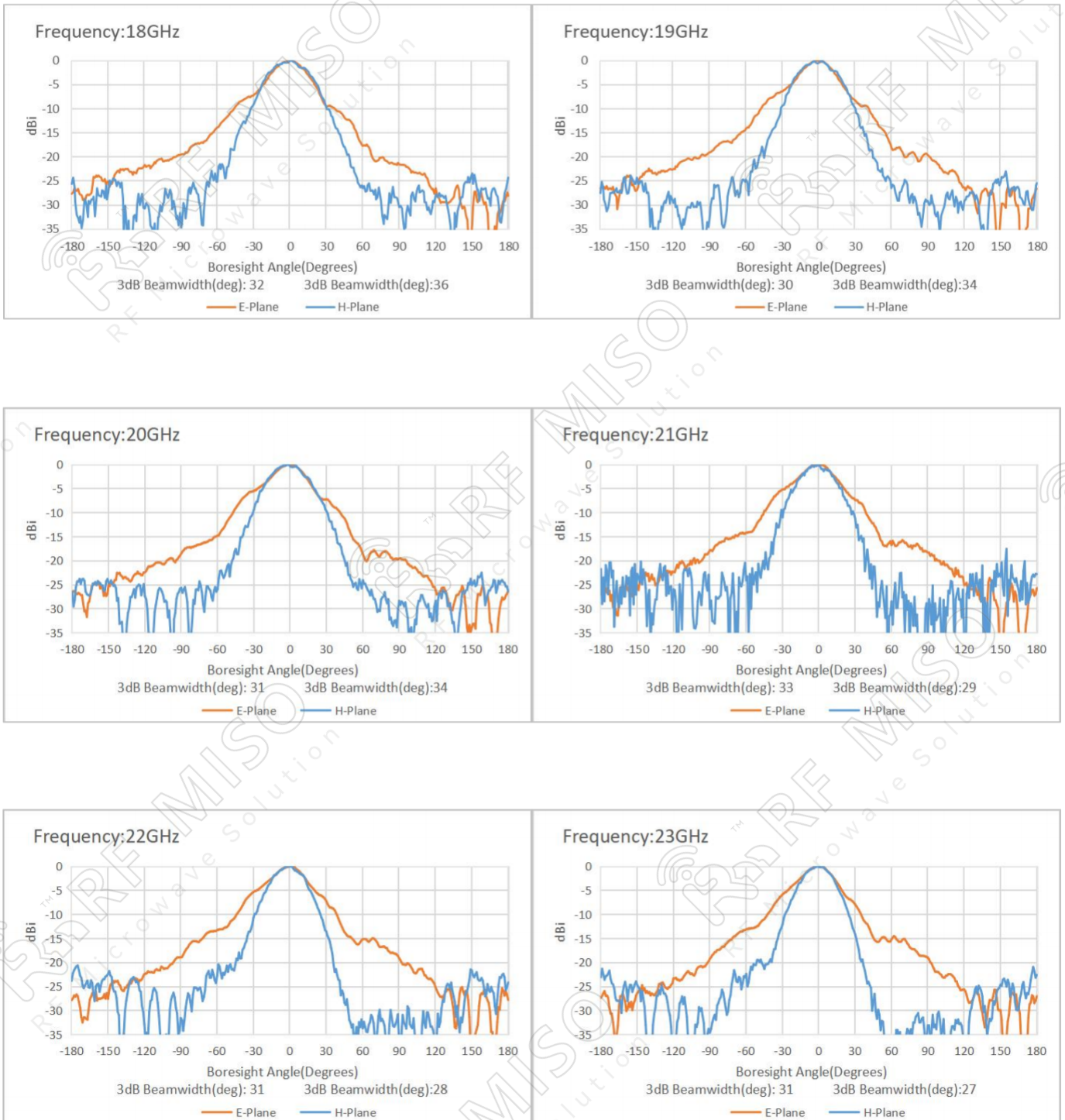


*Broadband Dual Polarized Horn Antenna  
15dBi Typ. Gain, 18-40GHz Frequency Range*

**Broadband Dual Polarized Horn Antenna Data Sheet**

**RM-BDPHA1840-15B**

**Port 2**

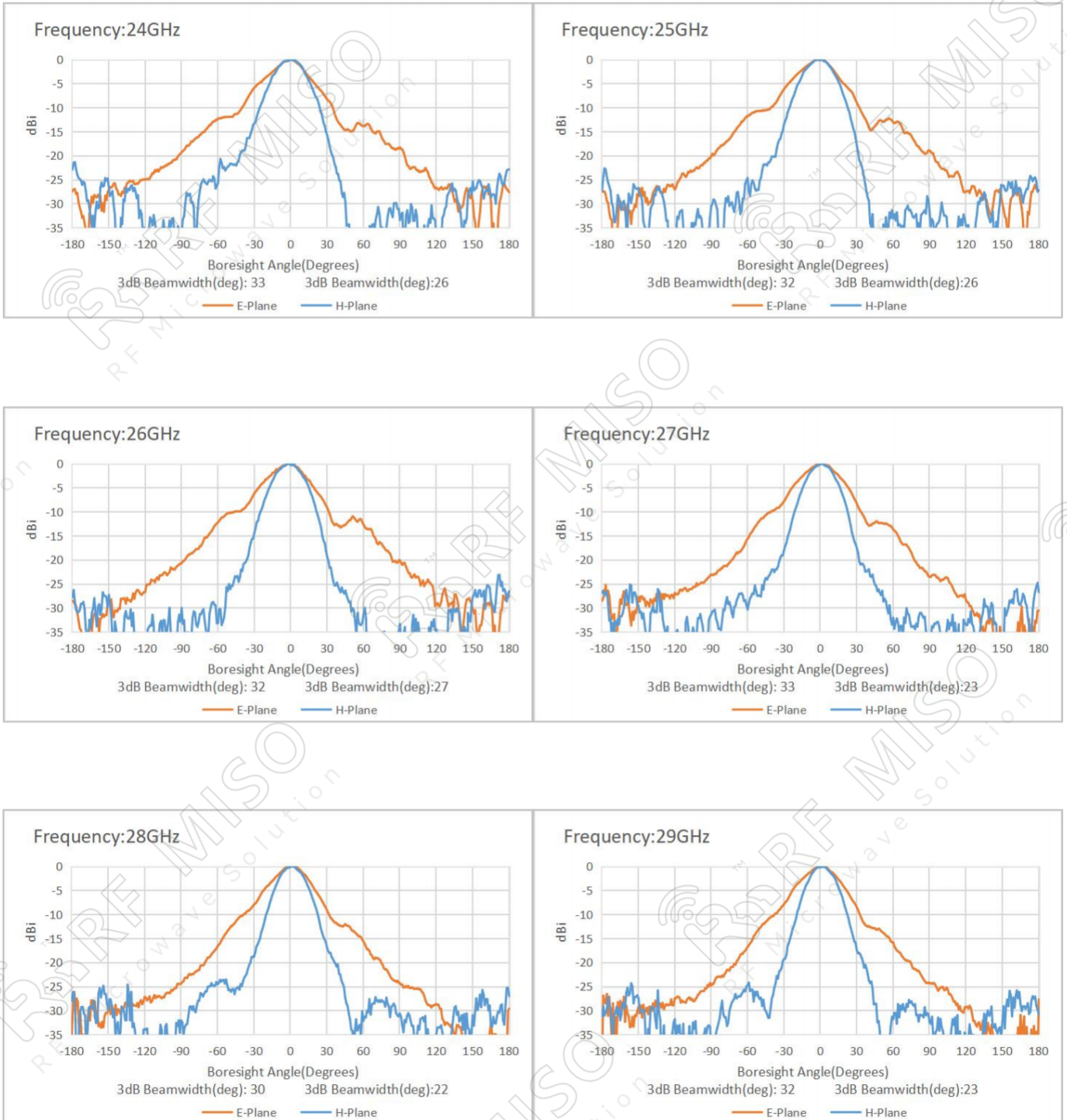




*Broadband Dual Polarized Horn Antenna  
15dBi Typ. Gain, 18-40GHz Frequency Range*

**Broadband Dual Polarized Horn Antenna Data Sheet**

**RM-BDPHA1840-15B**

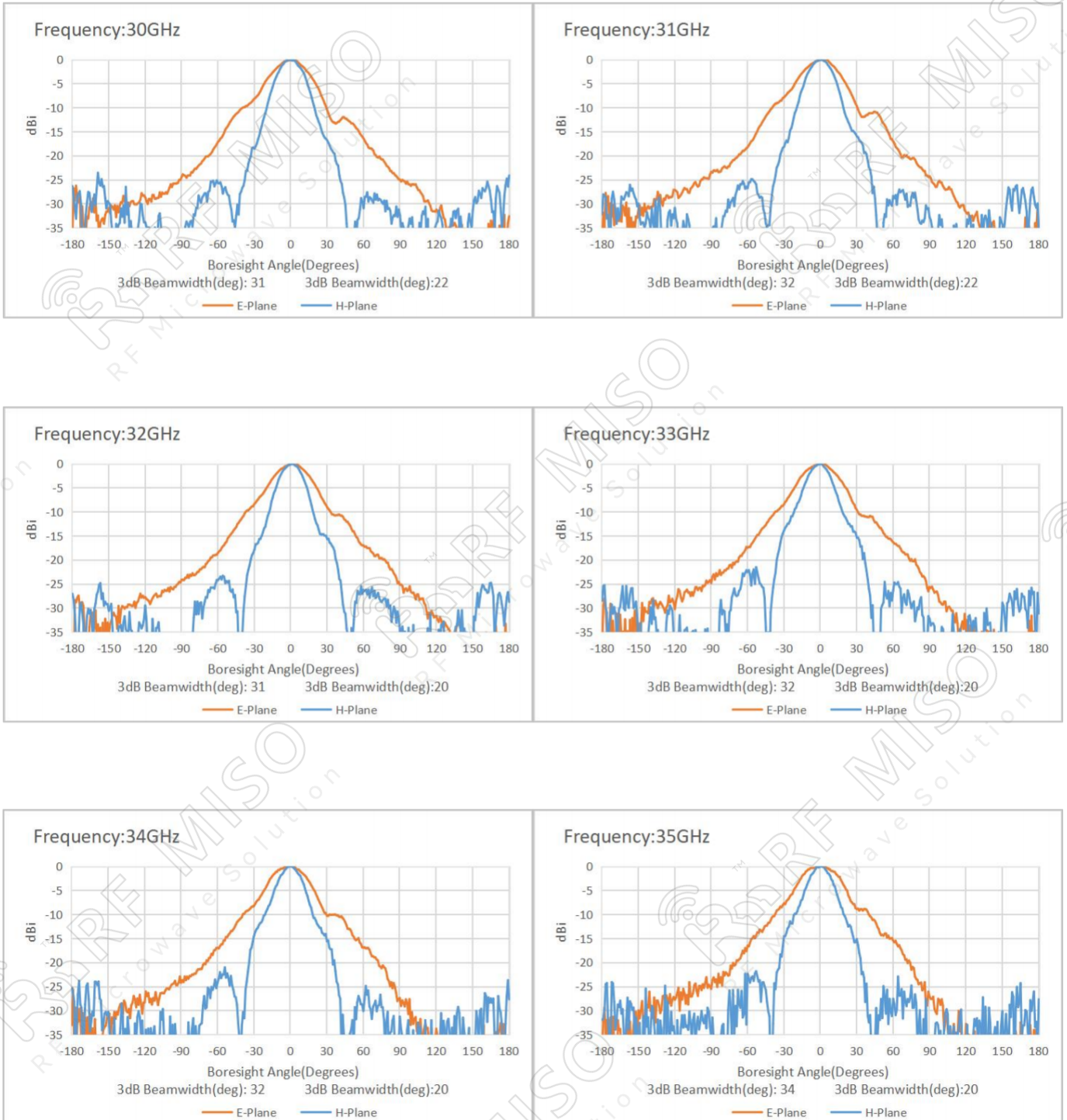




*Broadband Dual Polarized Horn Antenna  
15dBi Typ. Gain, 18-40GHz Frequency Range*

**Broadband Dual Polarized Horn Antenna Data Sheet**

**RM-BDPHA1840-15B**





*Broadband Dual Polarized Horn Antenna  
15dBi Typ. Gain, 18-40GHz Frequency Range*

**Broadband Dual Polarized Horn Antenna Data Sheet**

**RM-BDPHA1840-15B**

