

*Broadband Dual Polarized Horn Antenna  
10 dBi Typ. Gain, 4-12GHz Frequency Range*

**Broadband Horn Antenna Data Sheet**

**RM-BDPHA412-10**

**Features**

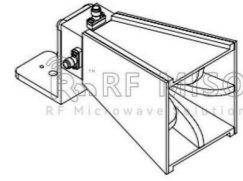
- Ideal for Antenna Measurements
- Dual Polarization
- Broadband Operation
- Quad Ridged

**Description**

The **RM-BDPHA412-10** is a dual polarized broadband horn antenna that operates in the frequency range of 4 GHz to 12 GHz. The antenna offers a typical gain of 10dBi and low VSWR 1.5:1 with SMA-F connector. The antenna supports dual polarized waveforms. It is suitable for extensive applications such as EMC/EMI testing, surveillance, direction finding, as well as antenna gain and pattern measurements.

**Specifications**

<b>RM-BDPHA412-10</b>		
Item	Specification	Units
Frequency Range	4-12	GHz
Gain	10 Typ.	dBi
VSWR	1.5:1	
Polarization	Dual	
Connector	SMA-Female	
Finishing	Paint	
Material	Al	dB
Size(L*W*H)	152*62.6*78.4(±5)	mm
Weight	0.242	kg

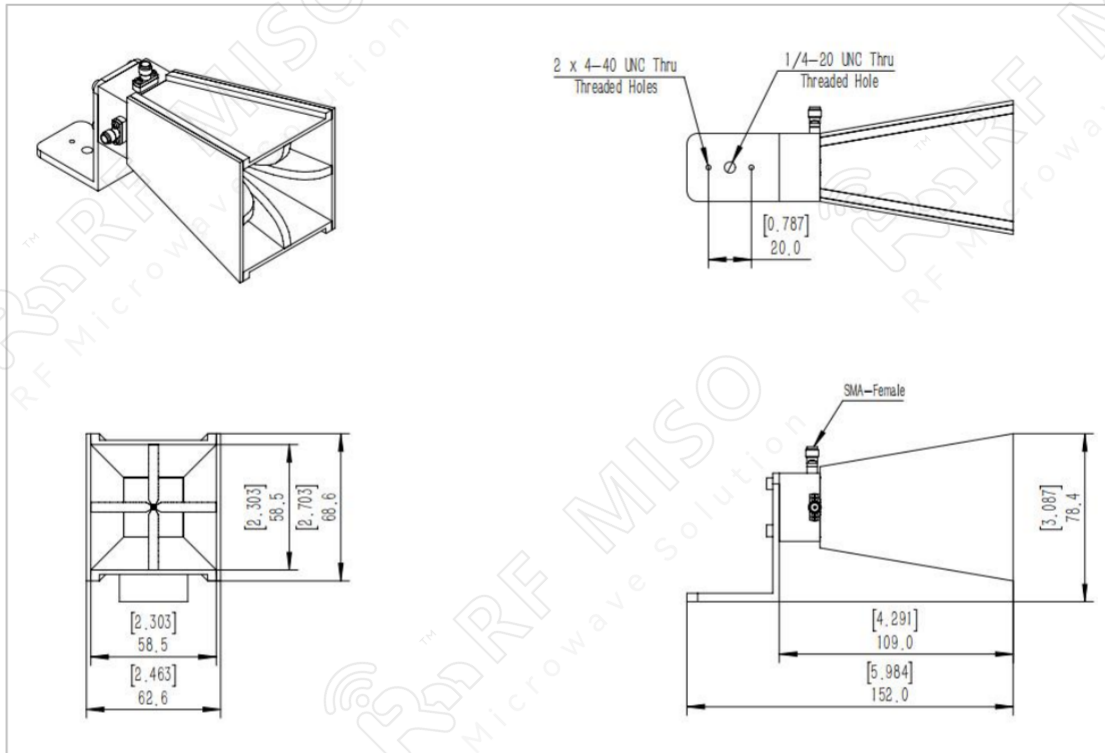


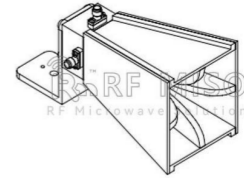
**Broadband Horn Antenna Data Sheet**

**RM-BDPHA412-10**

**Mechanical Drawing**

N-type connector is available, please contact RF Miso.





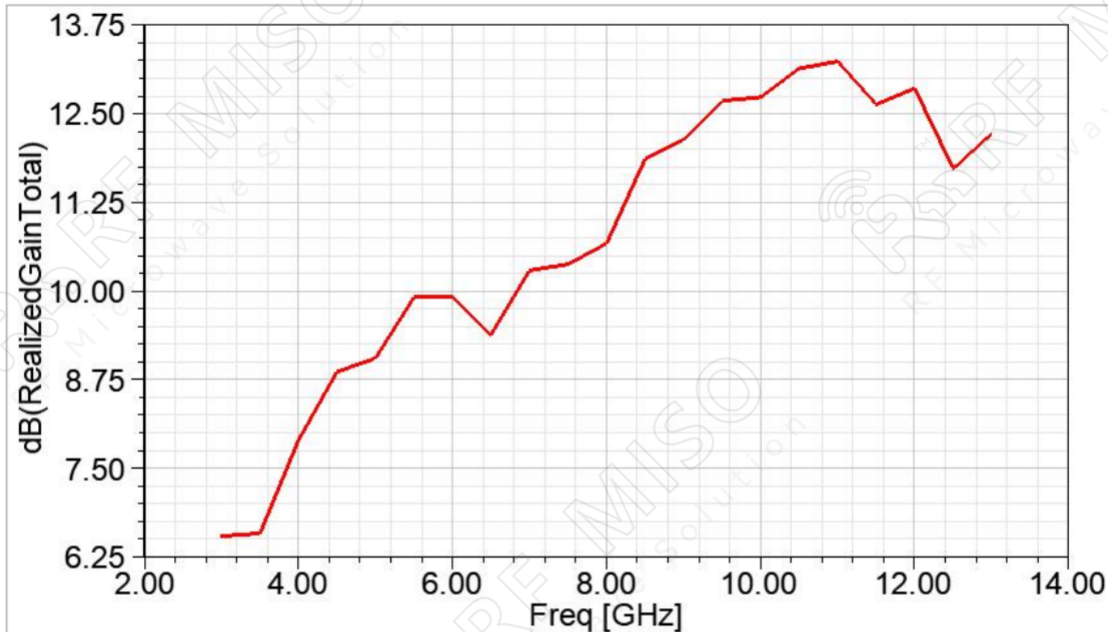
Broadband Dual Polarized Horn Antenna  
10 dBi Typ. Gain, 4-12GHz Frequency Range

**Broadband Horn Antenna Data Sheet**

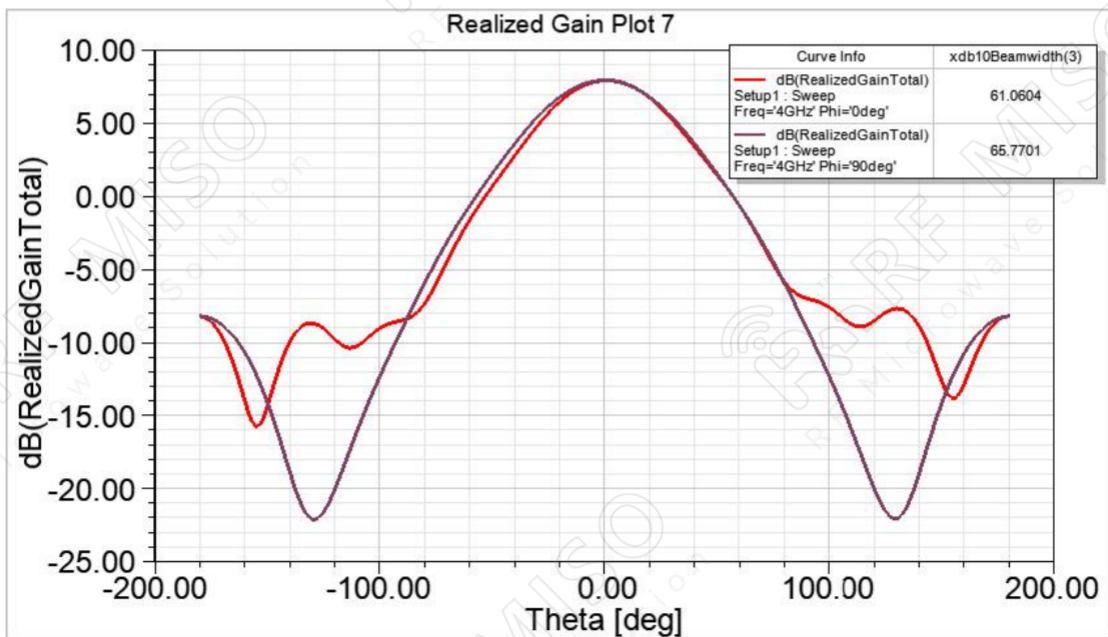
**RM-BDPHA412-10**

**Simulation Results**

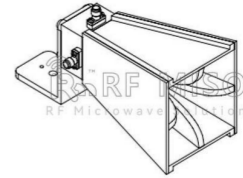
**Gain**



**Gain Pattern**



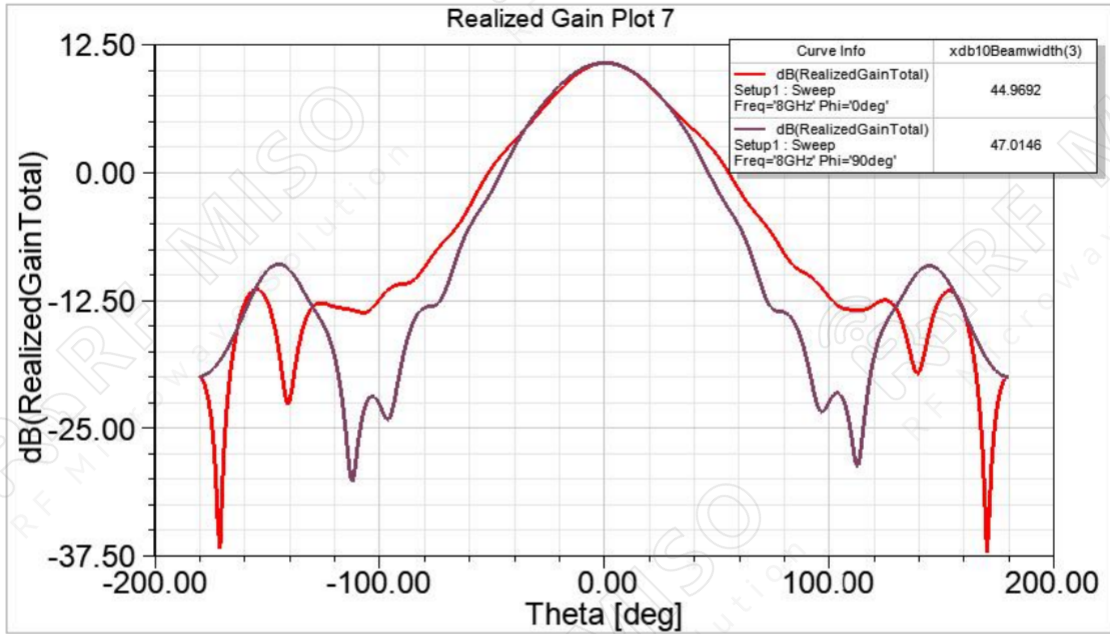
**4 GHz**



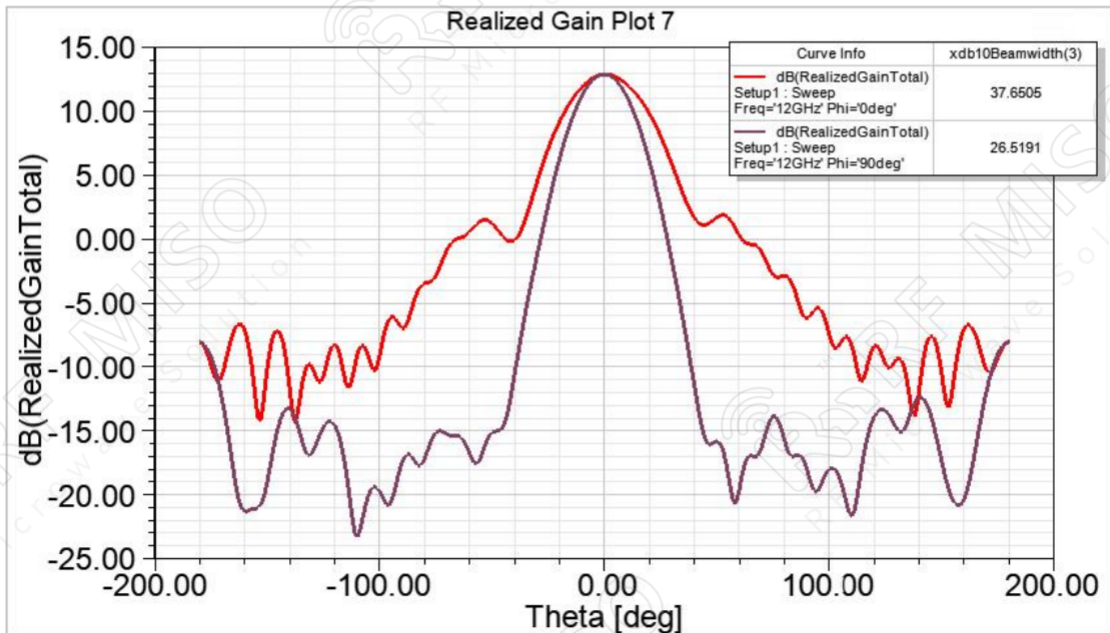
Broadband Dual Polarized Horn Antenna  
10 dBi Typ. Gain, 4-12GHz Frequency Range

**Broadband Horn Antenna Data Sheet**

**RM-BDPHA412-10**



8 GHz



12 GHz