



*Conical Dual Polarized Horn Antenna
20dBi Typ. Gain, 33-37 GHz Frequency Range*

Conical Dual Polarized Horn Antenna Data Sheet

RM-CDPHA3337-20

Features

- Coaxial Adapter for RF Inputs
- High Gain
- Low VSWR
- Broadband Operation
- Dual Linear Polarized
- Small Size

Descriptions

RF MISO's **Model RM-CDPHA3337-20** is a dual polarized horn antenna that operates from 33 to 37 GHz, The antenna offers a typical 20 dBi gain. The antenna VSWR is 1.5:1 typical. The antenna RF ports are 2.92mm-KFD connector. It can be widely used in EMI detection, orientation, reconnaissance, antenna gain and pattern measurement and other application fields.

Specifications

RM-CDPHA3337-20		
Parameters	Typical	Units
Frequency Range	33-37	GHz
Gain	20 Typ.	dBi
VSWR	1.5 Typ.	
Polarization	Dual Linear	
Cross Pol. Isolation	30 Typ.	dB
Port Isolation	30 Typ.	dB
Beamwidth	E-Plane 12.8~13.6	°
	H-Plane 18.6~15.6	
Sidelobe	E-Plane ≥ 18	dB
	H-Plane ≥ 30	
Connector	2.92mm-KFD	
Material	Al	



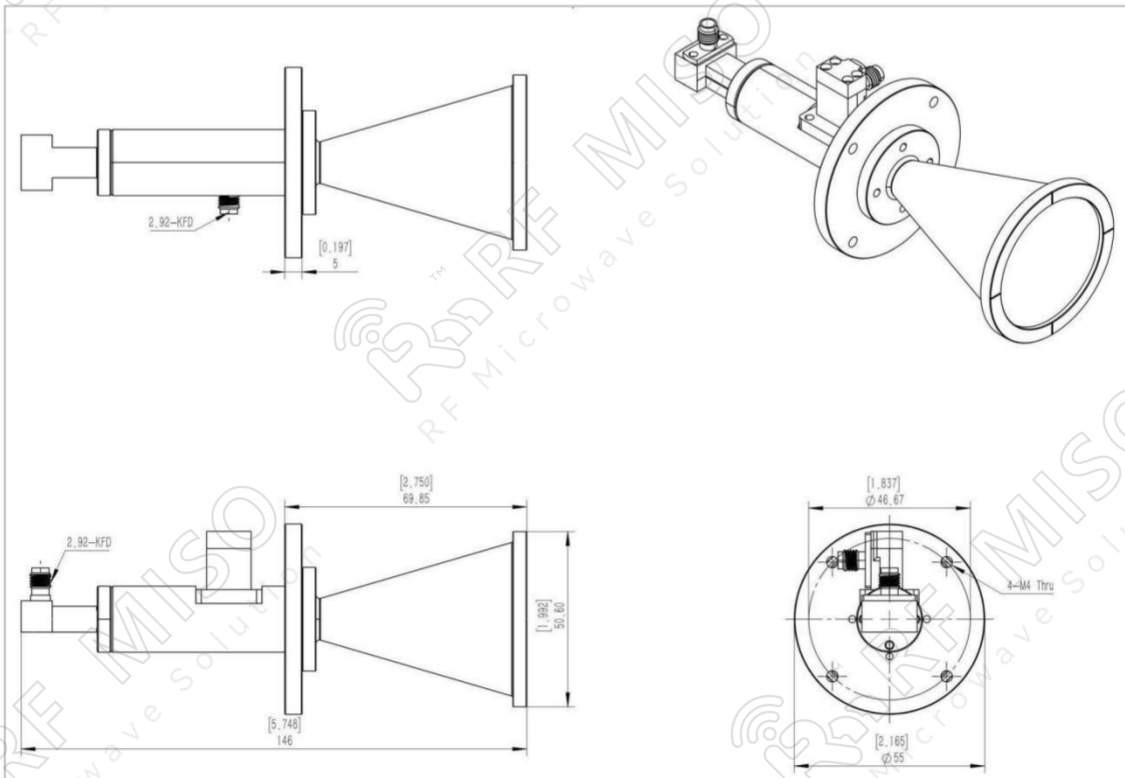
Conical Dual Polarized Horn Antenna
20dBi Typ. Gain, 33-37 GHz Frequency Range

Conical Dual Polarized Horn Antenna Data Sheet

RM-CDPHA3337-20

Finishing	Paint	
Size	146*Φ55(L*W*H)	mm
Weight	0.6 kg	

Outline Drawing





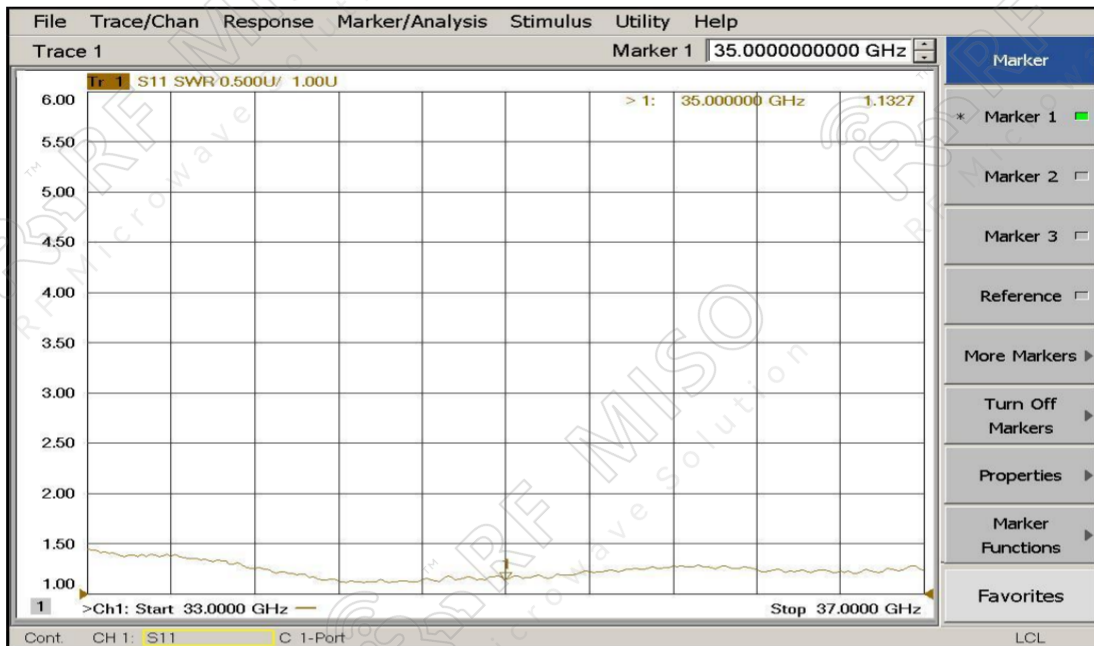
Conical Dual Polarized Horn Antenna
20dBi Typ. Gain, 33-37 GHz Frequency Range

Conical Dual Polarized Horn Antenna Data Sheet

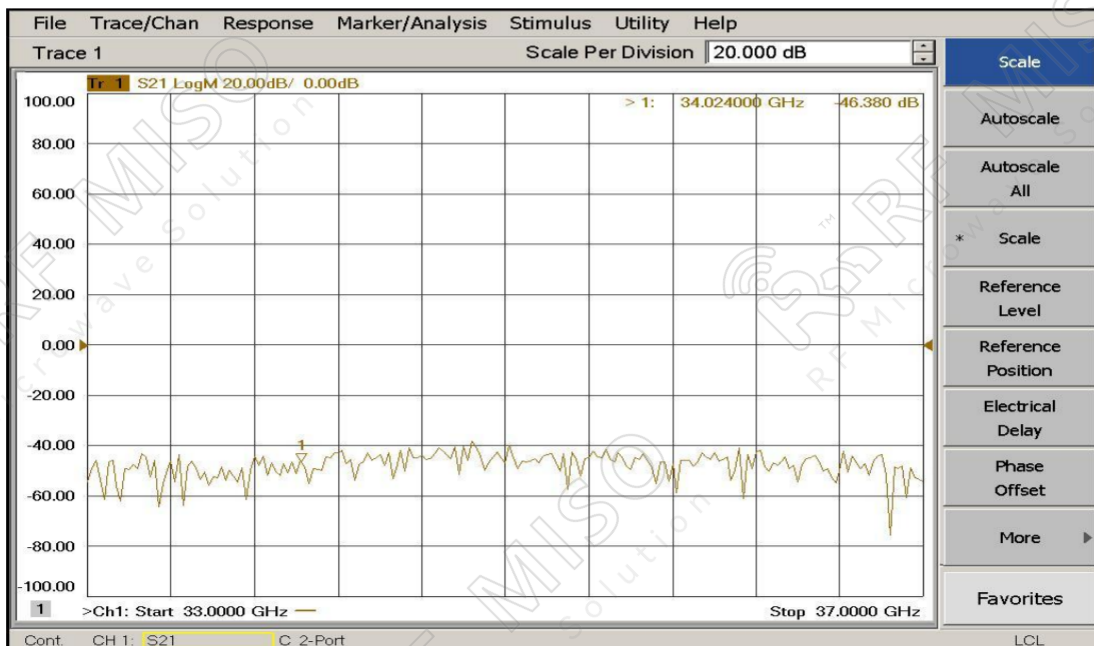
RM-CDPHA3337-20

Test Results

VSWR



Port Isolation



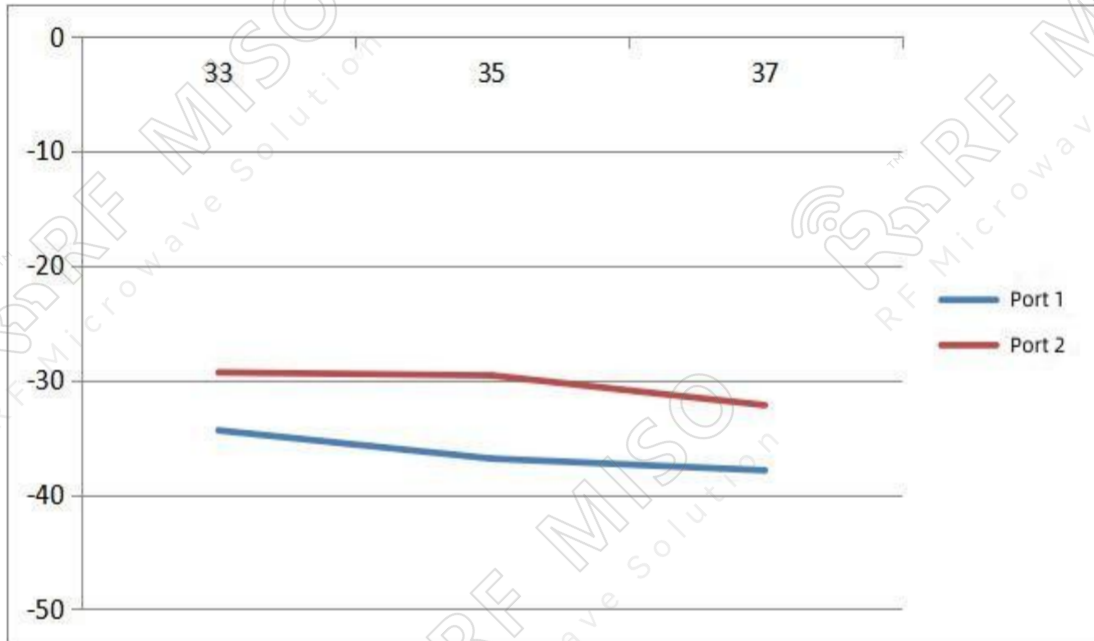


Conical Dual Polarized Horn Antenna
20dBi Typ. Gain, 33-37 GHz Frequency Range

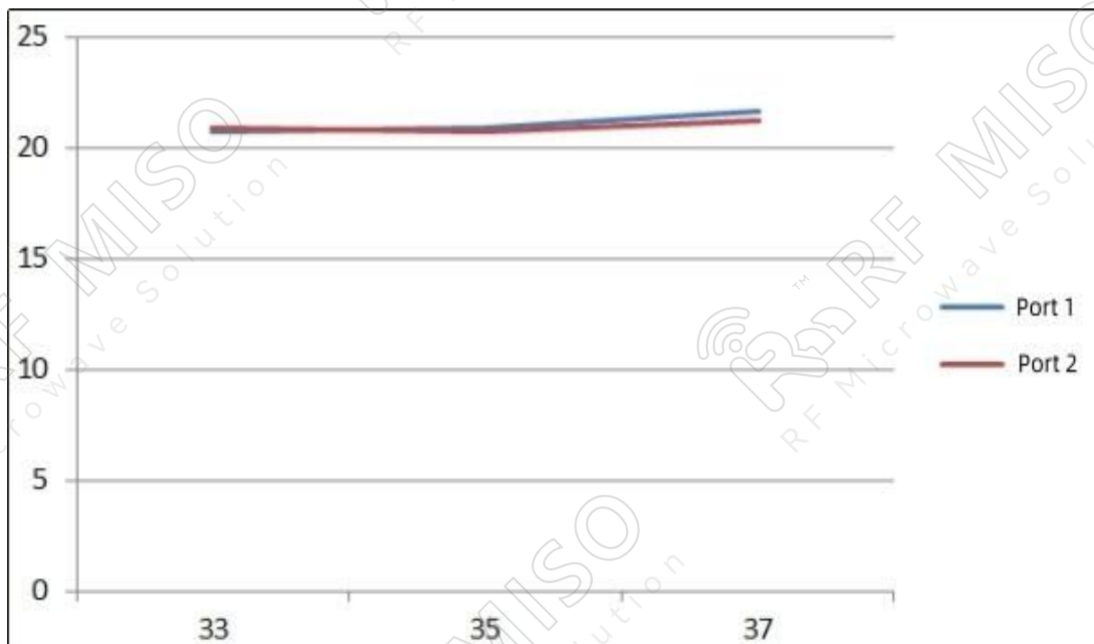
Conical Dual Polarized Horn Antenna Data Sheet

RM-CDPHA3337-20

Cross Pol. Isolation



Gain



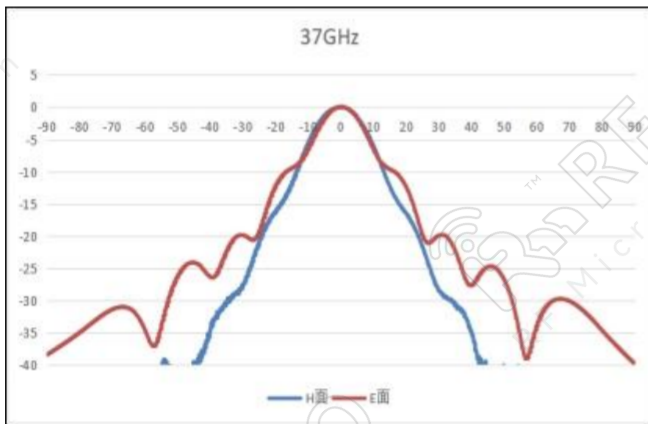
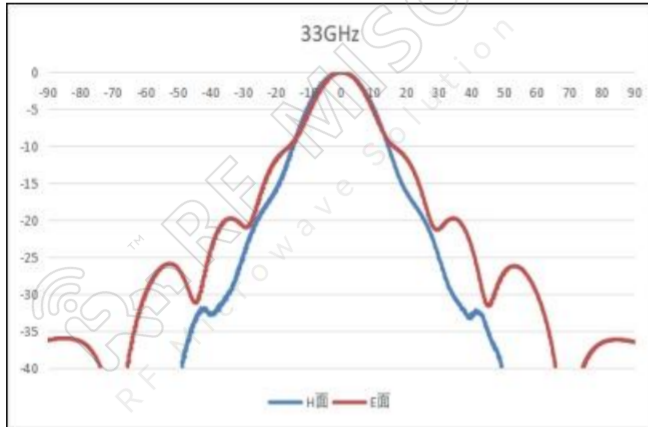


Conical Dual Polarized Horn Antenna
20dBi Typ. Gain, 33-37 GHz Frequency Range

Conical Dual Polarized Horn Antenna Data Sheet

RM-CDPHA3337-20

Port 1 Gain Pattern





Conical Dual Polarized Horn Antenna
20dBi Typ. Gain, 33-37 GHz Frequency Range

Conical Dual Polarized Horn Antenna Data Sheet

RM-CDPHA3337-20

Port 2 Gain Pattern

