



*Circularly Polarized Horn Antenna 13dBi Typ. Gain,  
0.9-2.25 GHz Frequency Range*

## Circularly Polarized Horn Antenna Data Sheet

**RM-CPHA09225-13**

### Features

- Low VSWR
- High Power handling
- Symmetrical Plane Beamwidth
- RHCP or LHCP
- Military Airborne Applications

### Descriptions

RF MISO's Model RM-CPHA09225-13 is RHCP or LHCP circularly polarized horn antenna that operates from 0.9 to 2.25 GHz. The antenna offers a typical gain of 13 dBi and low VSWR 2:1 Typ.

The antenna is equipped with a circular polarizer, a circular waveguide to circular waveguide Converter and a conical horn antenna. The gain of the antenna is uniform in the entire frequency band, the pattern is symmetrical, and the working efficiency is high. Antennas are widely used in antenna far-field testing, radio frequency radiation testing and other scenarios.

### Specifications

RM-CPHA09225-13		
Parameters	Specification	Unit
Frequency Range	0.9-2.25	GHz
Gain	13 Typ.	dBi
VSWR	2 Typ.	
AR	2 Typ.	dB
Polarization	RHCP or LHCP	
Interface	N-Female	
Material	Al	
Finishing	Paint	
Average Power	150	W
Peak Power	3000	W
Size (L*W*H)	1896.7*280.0*440.0 (±5)	mm
Weight	75.8	kg



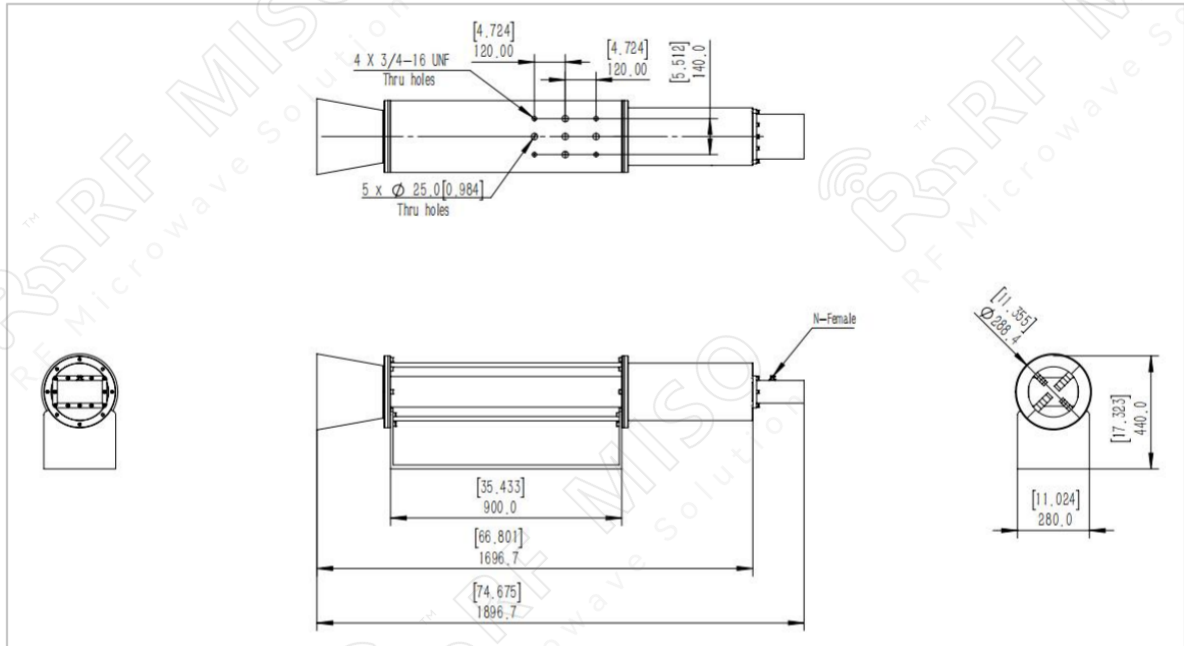
Circularly Polarized Horn Antenna 13dBi Typ. Gain,  
0.9-2.25 GHz Frequency Range

**Circularly Polarized Horn Antenna Data Sheet**

**RM-CPHA09225-13**

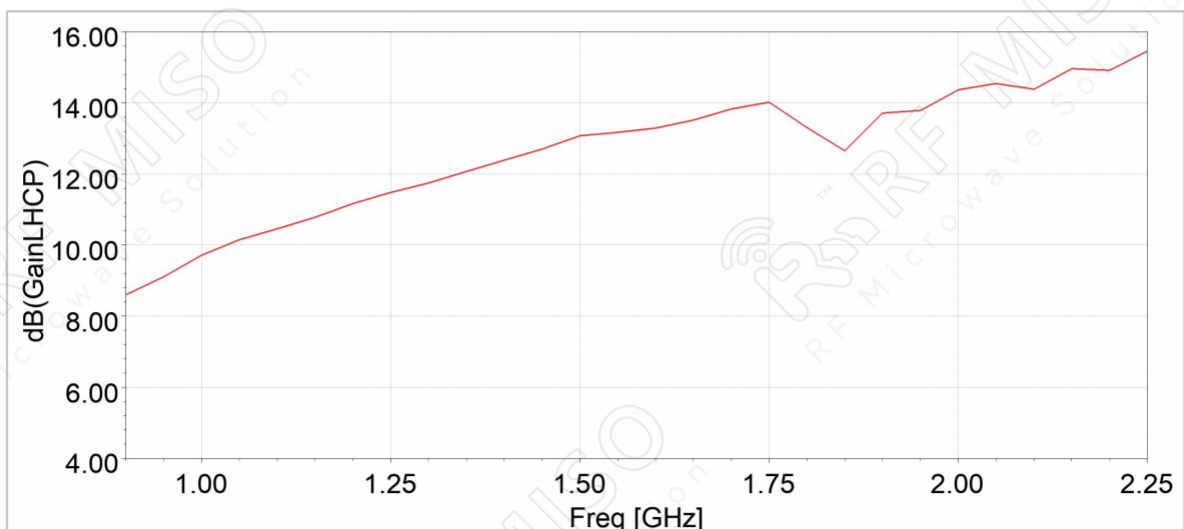
**Outline Drawing**

2.92mm type and SMA type connectors are available, please contact RF Miso.



**Simulation Data**

**Gain**

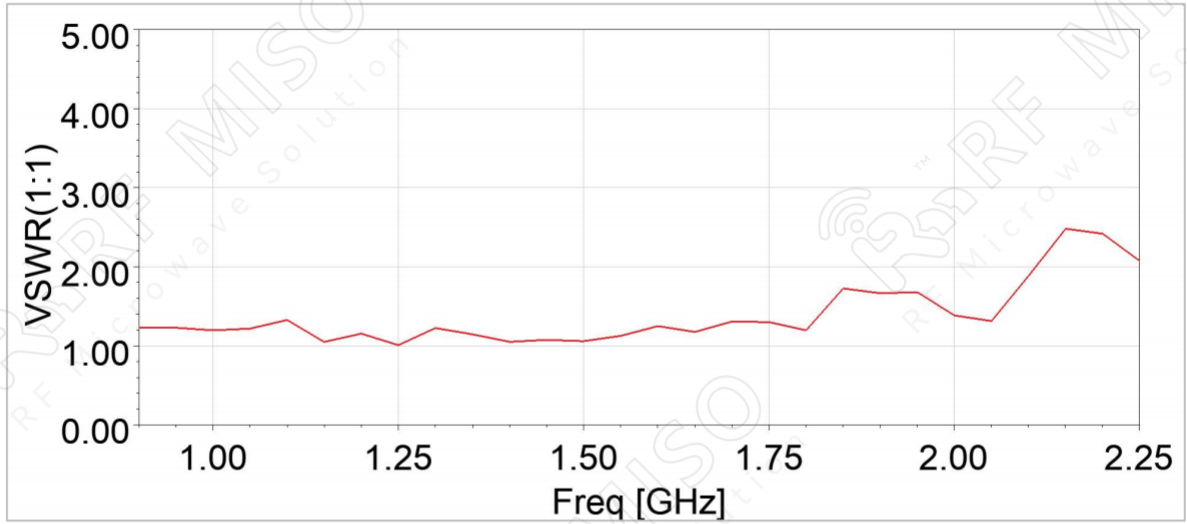


Circularly Polarized Horn Antenna 13dBi Typ. Gain,  
0.9-2.25 GHz Frequency Range

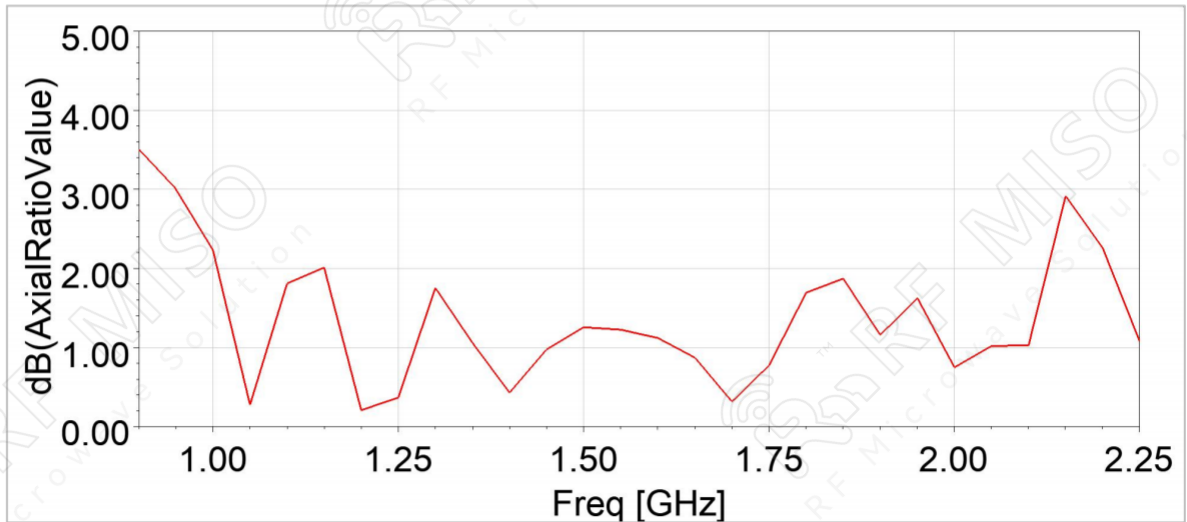


**Circularly Polarized Horn Antenna Data Sheet**

**VSWR**



**AR**



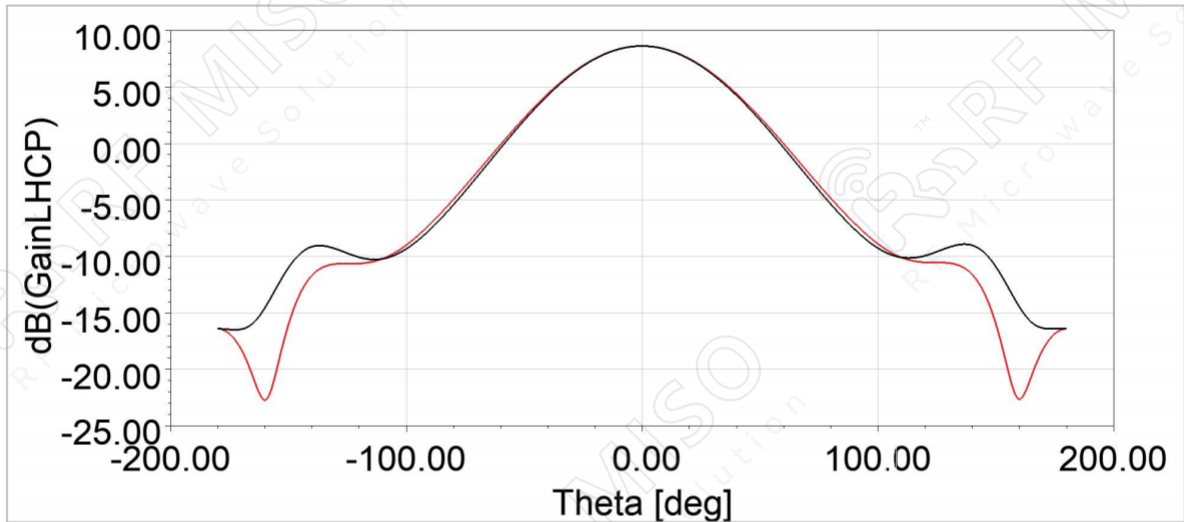


Circularly Polarized Horn Antenna 13dBi Typ. Gain,  
0.9-2.25 GHz Frequency Range

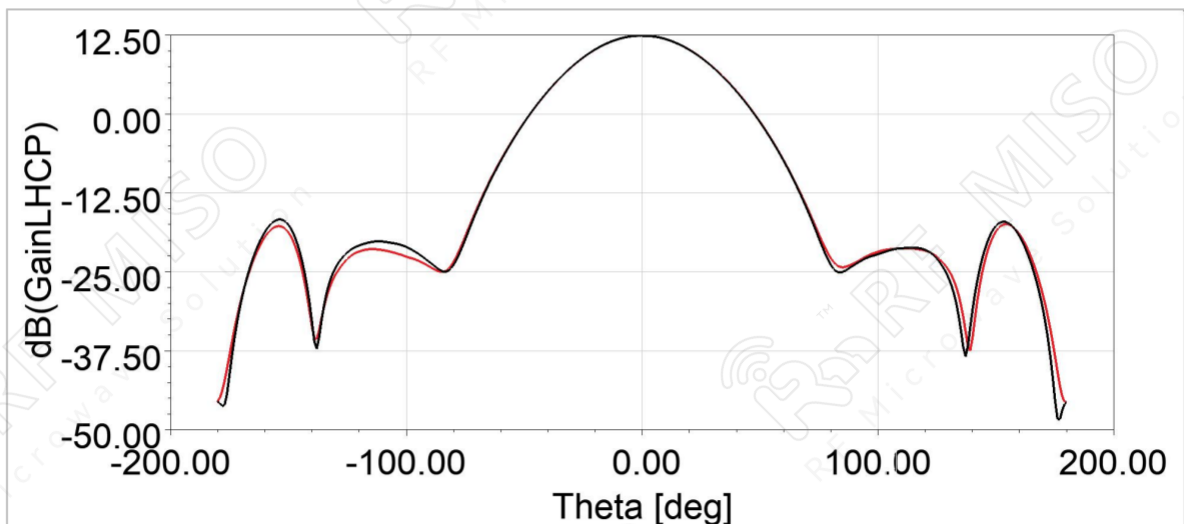
**Circularly Polarized Horn Antenna Data Sheet**

**RM-CPHA09225-13**

**Gain Plot**



**0.9GHz**



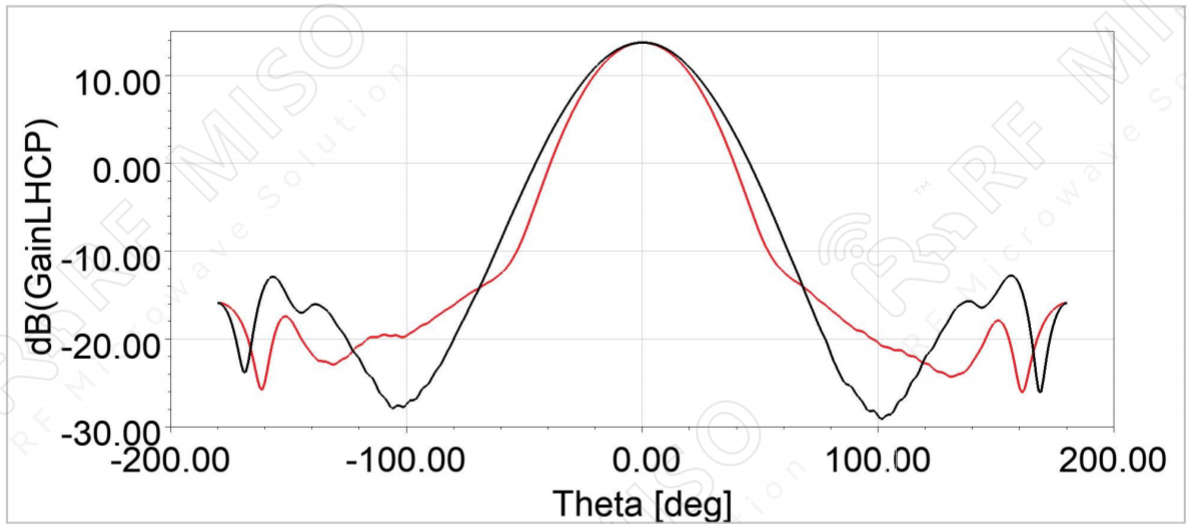
**1.5GHz**



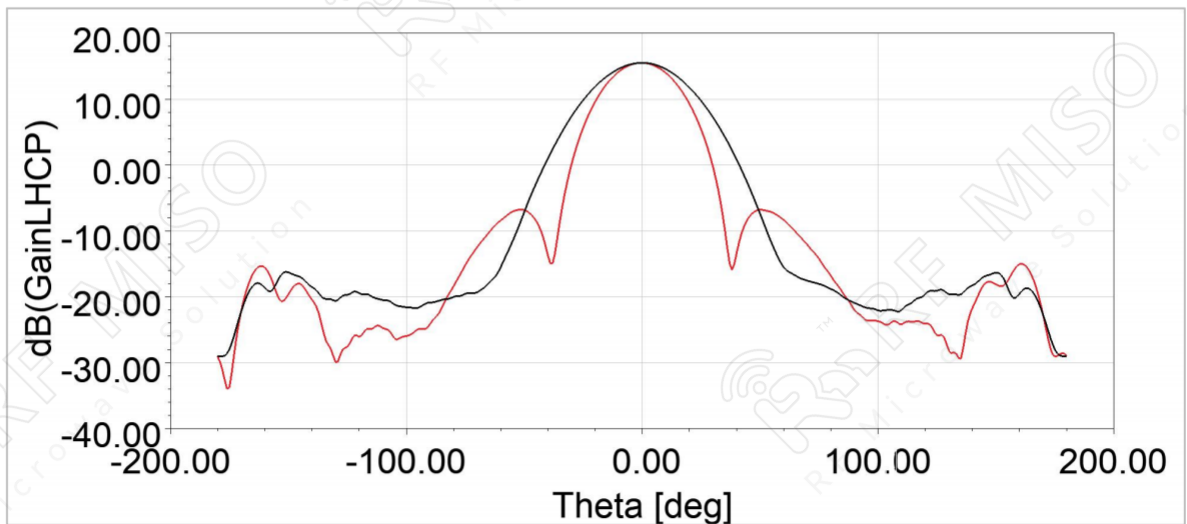
Circularly Polarized Horn Antenna 13dBi Typ. Gain,  
0.9-2.25 GHz Frequency Range

**Circularly Polarized Horn Antenna Data Sheet**

**RM-CPHA09225-13**



1.9GHz



2.25GHz