



Standard Gain Horn Antenna
25dBi Typ. Gain, 26.3-40 GHz Frequency Range

Standard Gain Horn Antenna Data Sheet

RM-SGHA28-25

Features

- Wave-guide and Connector Interface
- Low Side-lobe
- Linear Polarization
- High Return Loss

Descriptions

RF MISO's **Model RM-SGHA28-25** is a linear polarized standard gain horn antenna that operates from 26.3 to 40 GHz. The antenna offers a typical gain of 25 dBi and low VSWR 1.3:1. The antenna has a typical 3dB beamwidth of 8.7 degrees on the E plane and 9.9 degrees on H plane. This antenna has flange input and coaxial input for customers to rotate. Antenna mounting brackets include ordinary L-type mounting bracket and I-type bracket^①

Specifications

Parameters	Specification	Unit
Frequency Range	26.3-40	GHz
Wave-guide	WR28	
Gain	25 Typ.	dBi
VSWR	1.3 Typ.	
Polarization	Linear	
3 dB Beamwidth, E-Plane	8.7° Typ.	
3 dB Beamwidth, H-Plane	9.9° Typ.	
Interface	2.92-Female	
Material	Al	
Finishing	Paint	
Size (L*W*H)	196.82*74.69*59.81 (±5)	mm
Weight	0.146	kg
Operating Temperature	-40° ~+85°	° C

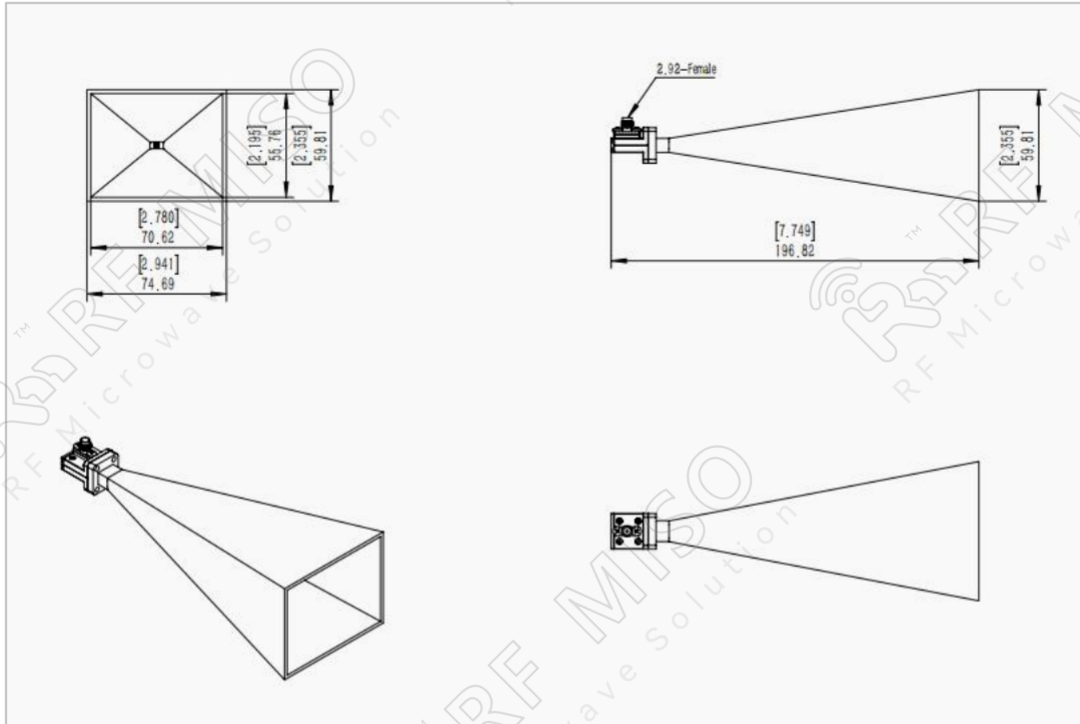


Standard Gain Horn Antenna
25dBi Typ. Gain, 26.3-40 GHz Frequency Range

Standard Gain Horn Antenna Data Sheet

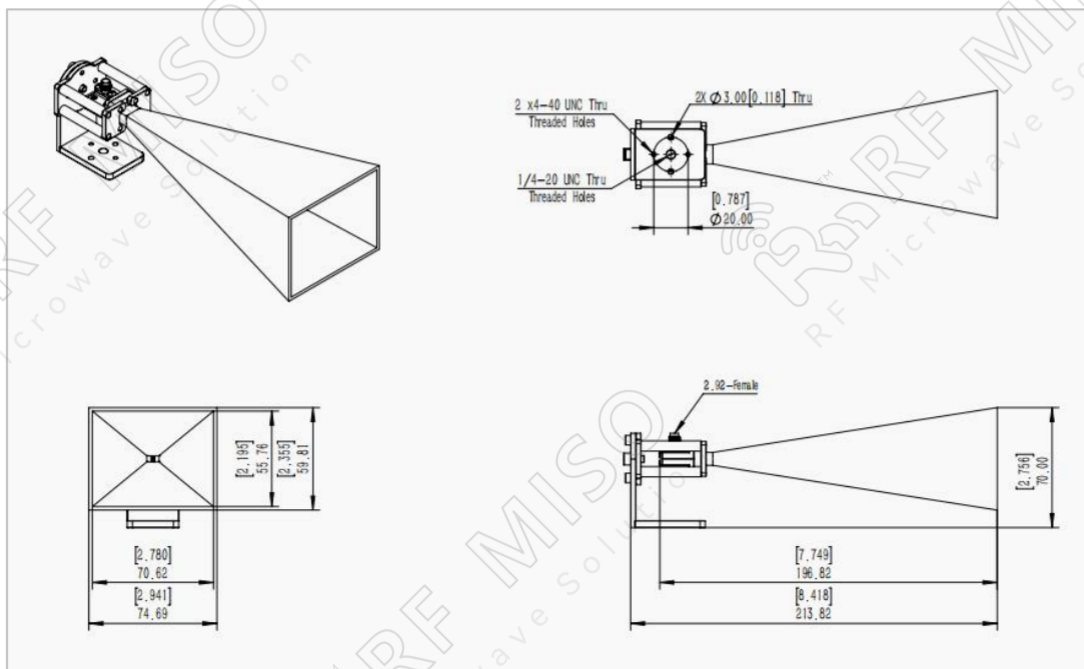
RM-SGHA28-25

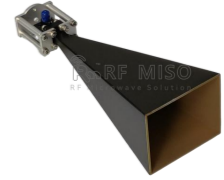
Mechanical Drawing (P/N: RM-SGHA28-25)



Mechanical Drawing with L-type Mounting Bracket(P/N: RM-SGHA28-25L)

N connector is available, please contact RF Miso.



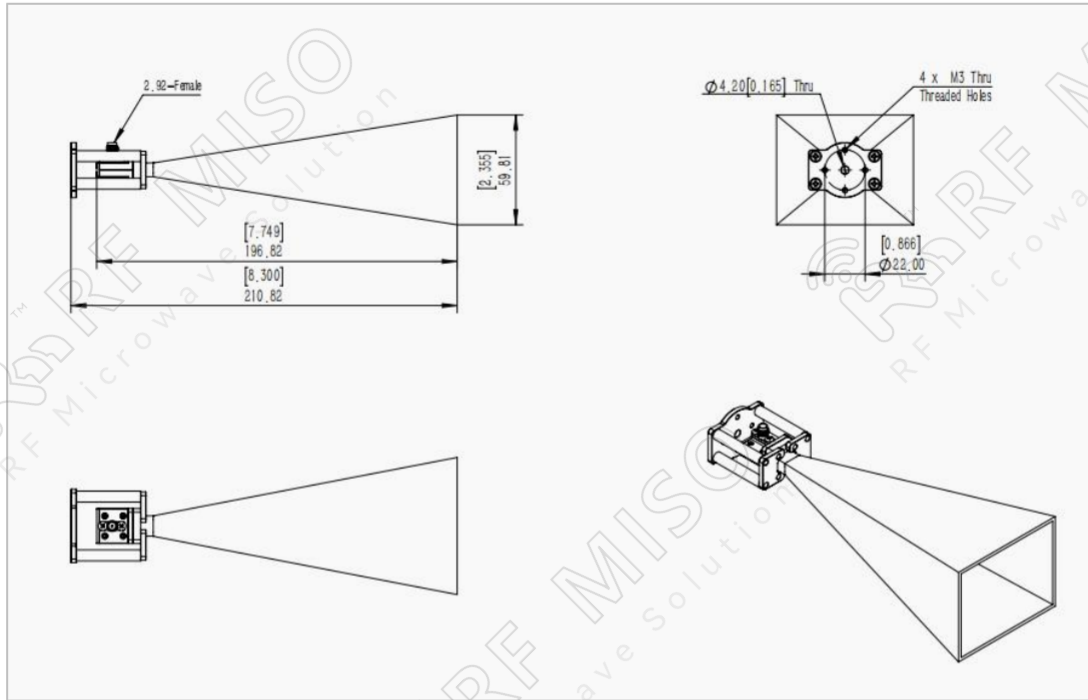


Standard Gain Horn Antenna
25dBi Typ. Gain, 26.3-40 GHz Frequency Range

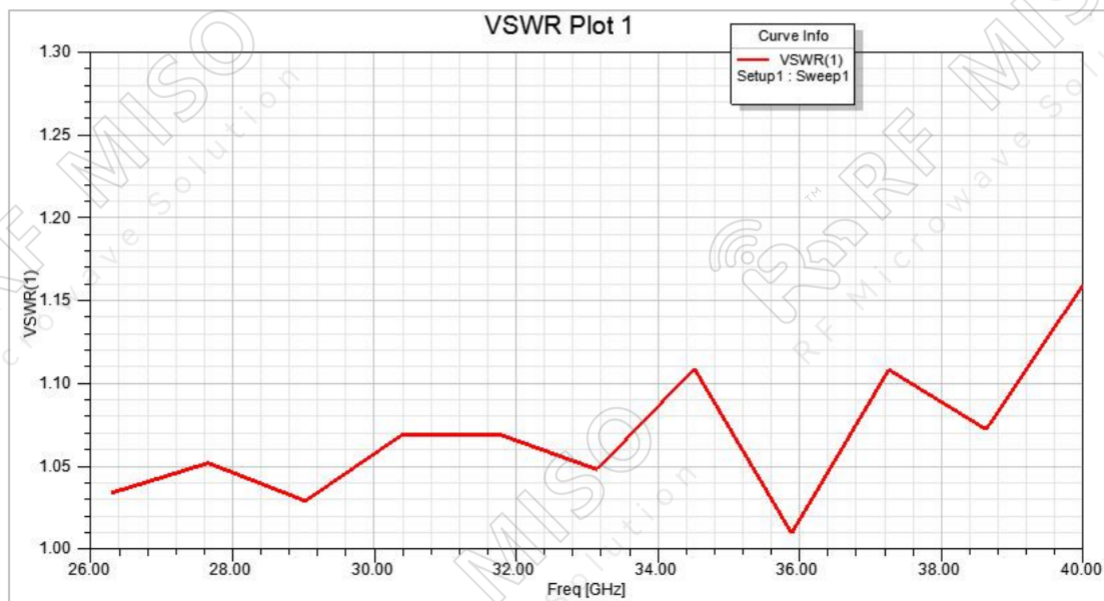
Standard Gain Horn Antenna Data Sheet

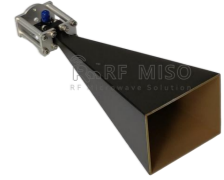
RM-SGHA28-25

Mechanical Drawing with I-type Mounting Bracket (P/N: RM-SGHA28-25I)



VSWR



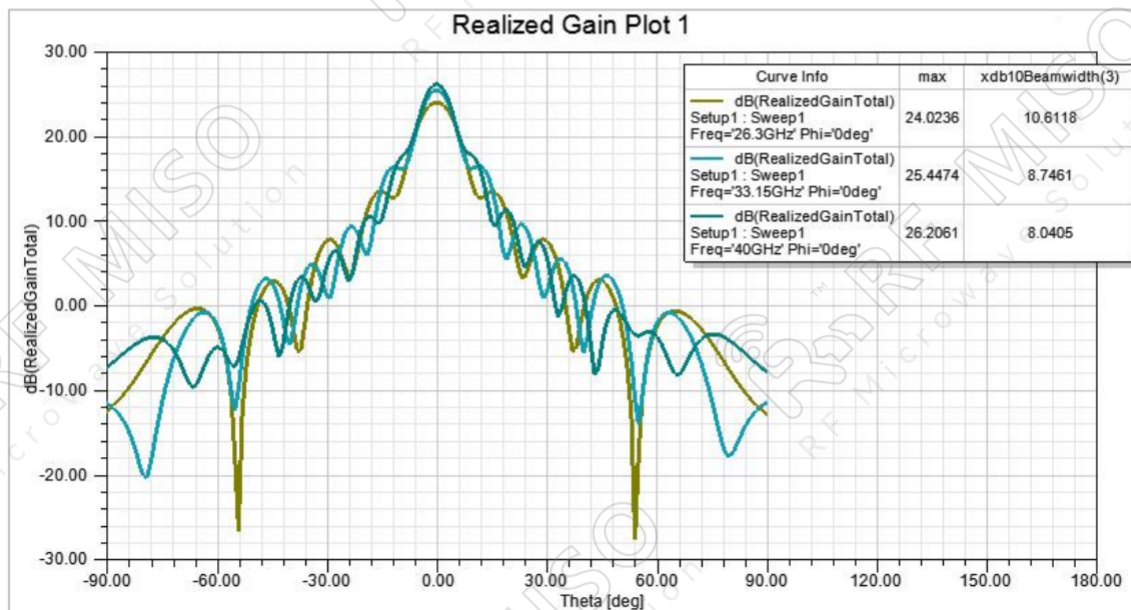
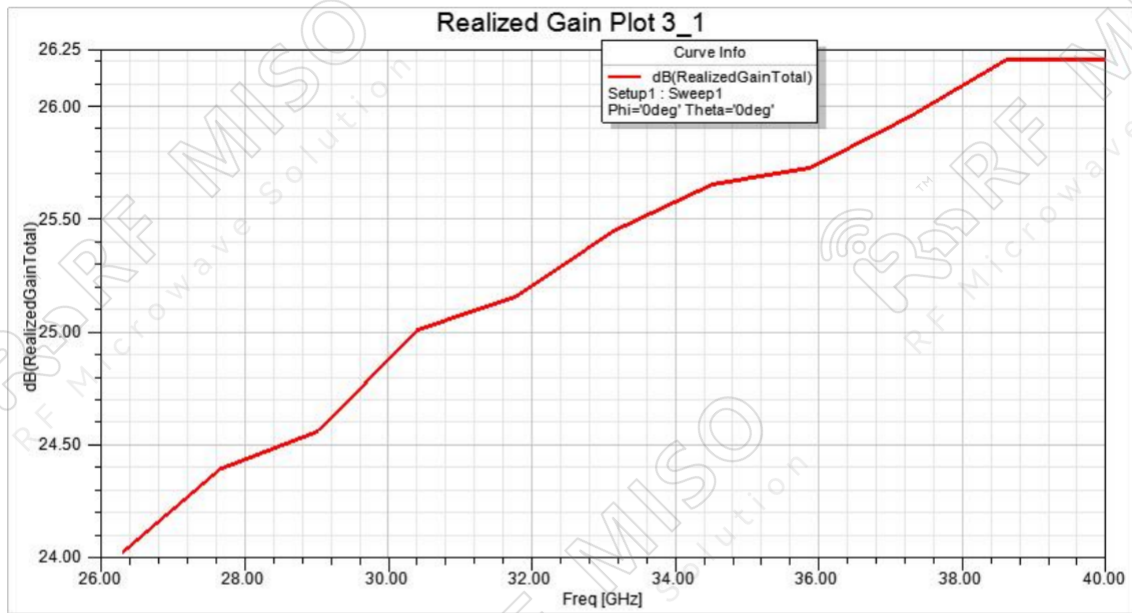


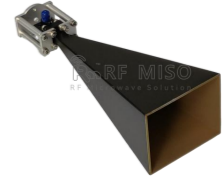
Standard Gain Horn Antenna
25dBi Typ. Gain, 26.3-40 GHz Frequency Range

Standard Gain Horn Antenna Data Sheet

RM-SGHA28-25

Gain

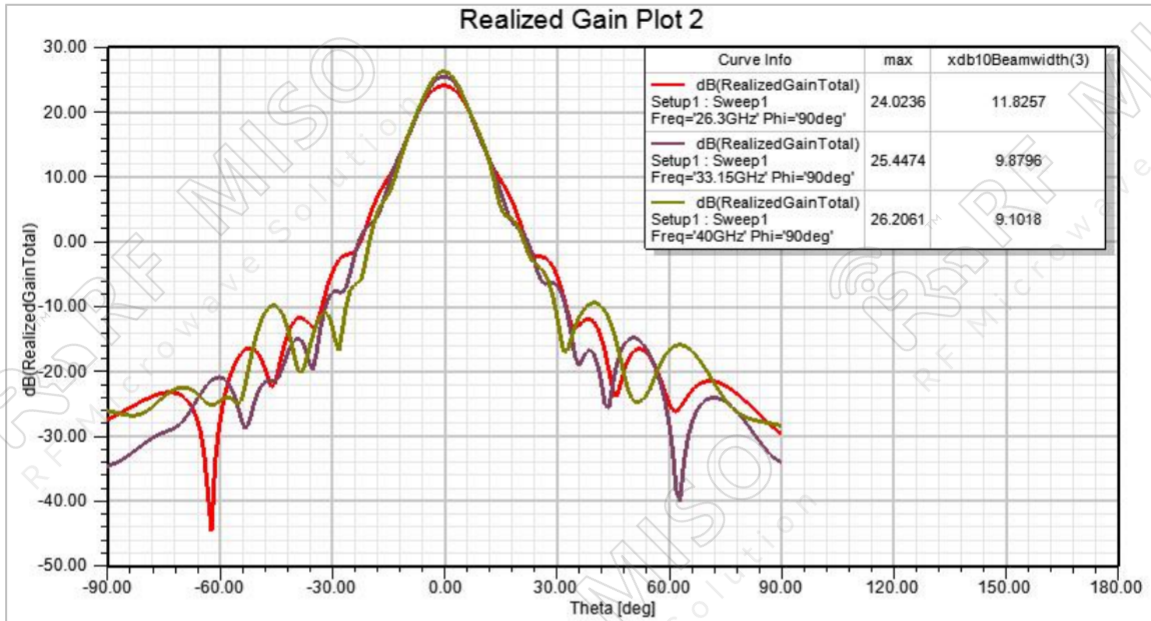




Standard Gain Horn Antenna
25dBi Typ. Gain, 26.3-40 GHz Frequency Range

Standard Gain Horn Antenna Data Sheet

RM-SGHA28-25



① **Rotating L-type bracket:** The rotating bracket is used for antenna polarization adjustment, and the tooling integrated with the bracket can precisely adjust the polarization directions of 0° , 45° , and 90° to ensure the accuracy and consistency of the calibration results.

Note:

- If the data presented is simulated. Actual data may vary unit to unit, slightly.
- Any foreign objects in the wave-guide will cause performance degradation and possible device damage.
- We can customize antennas according to your specific needs.