

Standard Gain Horn Antenna
10dBi Typ. Gain, 2.60-3.95 GHz Frequency Range

Standard Gain Horn Antenna Data Sheet

RM-SGHA284-10

Features

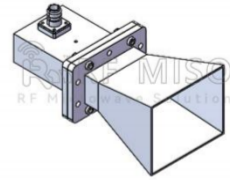
- Wave-guide and Connector Interface
- Low Side-lobe
- Linear Polarization
- High Return Loss

Descriptions

RF MISO's **Model RM-SGHA284-10** is a linear polarized standard gain horn antenna that operates from 2.60 to 3.95 GHz. The antenna offers a typical gain of 10 dBi and low VSWR 1.3:1. The antenna has a typical 3dB beamwidth of 51.6 degrees on the E plane and 52.1 degrees on H plane. This antenna has flange input and coaxial input for customers to rotate. Antenna mounting brackets include L-type mounting bracket and I-type bracket①

Specifications

Parameters	Specification	Unit
Frequency Range	2.60-3.95	GHz
Wave-guide	WR284	
Gain	10 Typ.	dBi
VSWR	1.3 Typ.	
Polarization	Linear	
3 dB Beamwidth, E-Plane	51.6° Typ.	
3 dB Beamwidth, H-Plane	52.1° Typ.	
Interface	N-Female	
Material	Al	
Finishing	Paint	
Size (L*W*H)	211.22*114.3*92.15(±5)	mm
Weight	0.799	kg
Average Power	150	w
Peak Power	3000	w
Operating Temperature	-40° ~+85°	° C

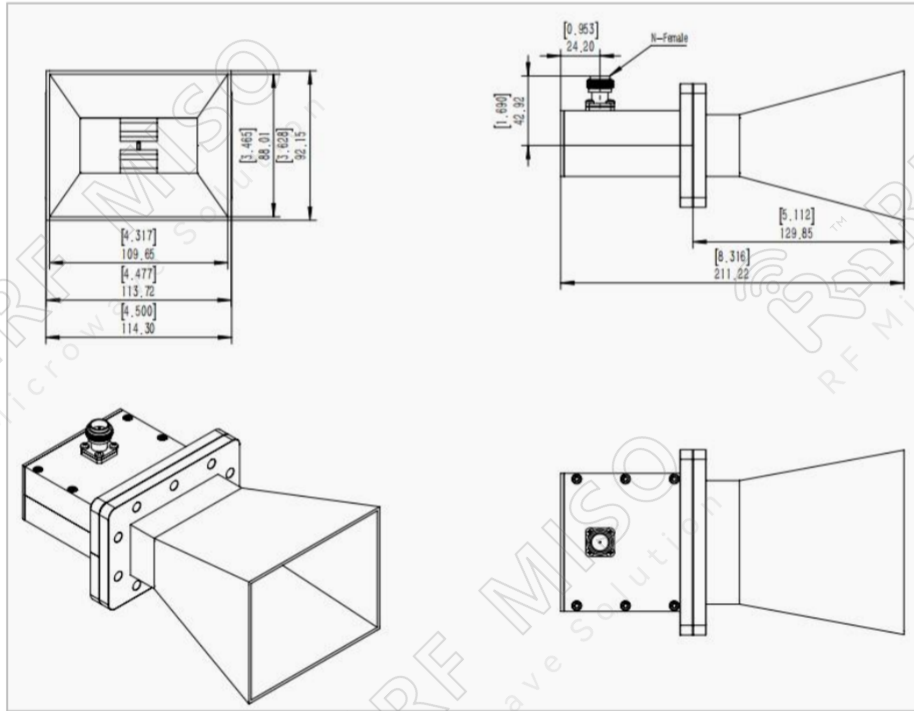


Standard Gain Horn Antenna
10dBi Typ. Gain, 2.60-3.95 GHz Frequency Range

Standard Gain Horn Antenna Data Sheet

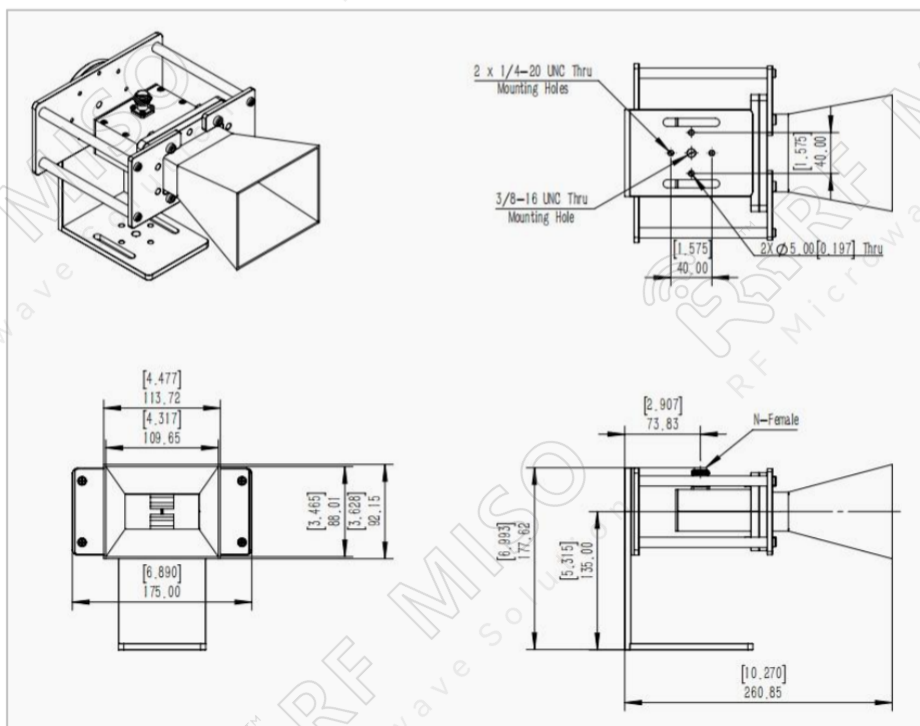
RM-SGHA284-10

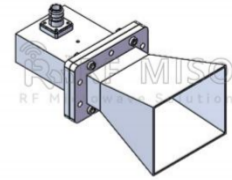
Mechanical Drawing (P/N: RM-SGHA284-10)



Mechanical Drawing with L-type Mounting Bracket(P/N: RM-SGHA284-10L)

SMA connector is available, please contact RF Miso.



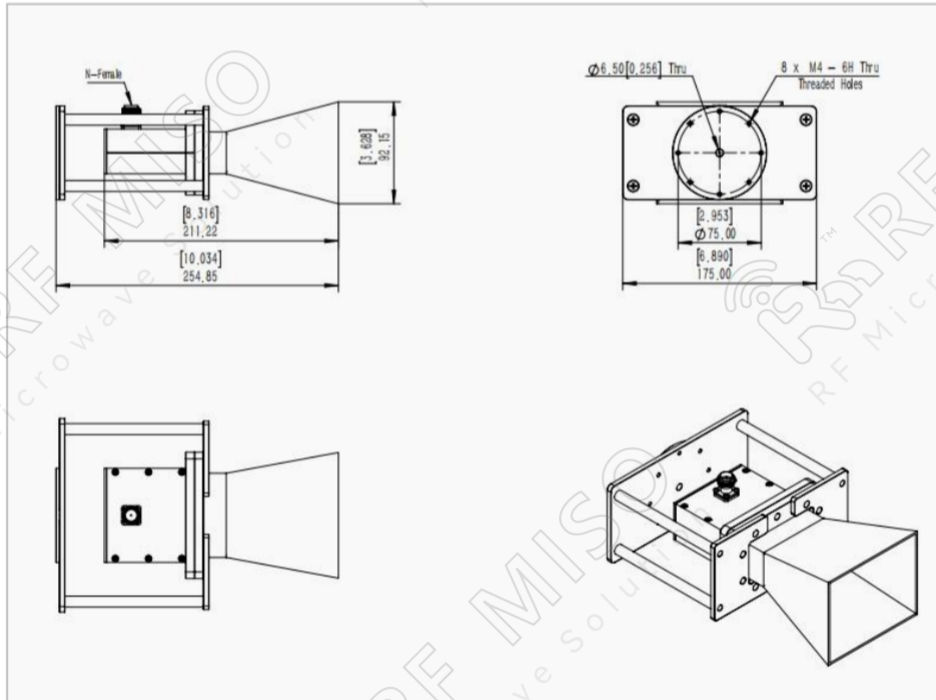


Standard Gain Horn Antenna
10dBi Typ. Gain, 2.60-3.95 GHz Frequency Range

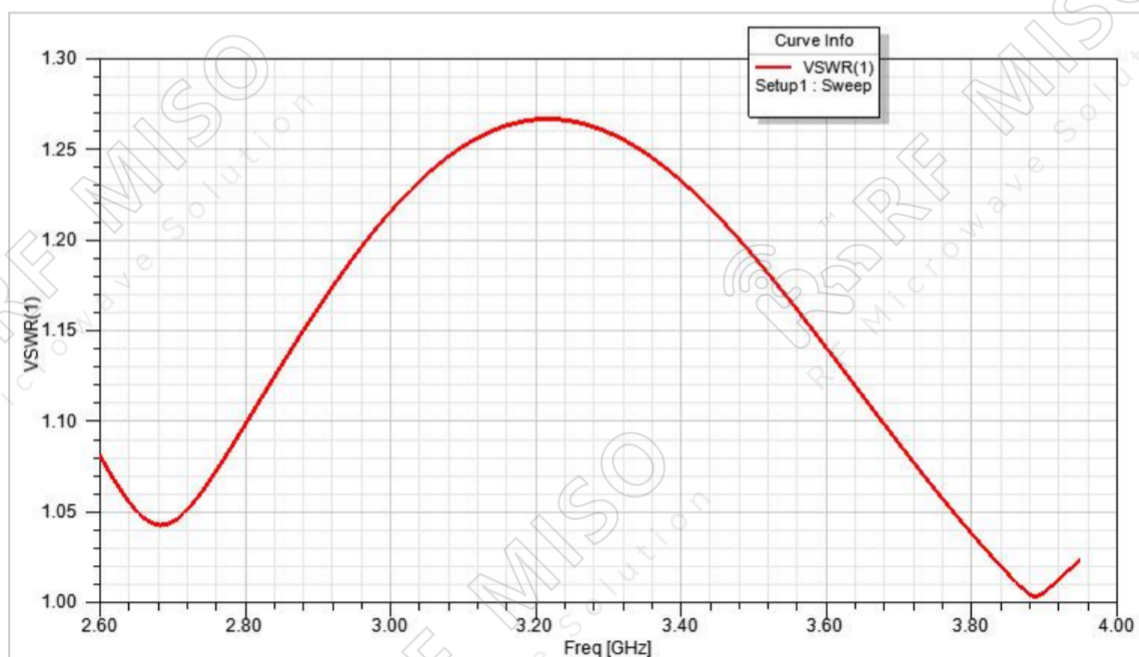
Standard Gain Horn Antenna Data Sheet

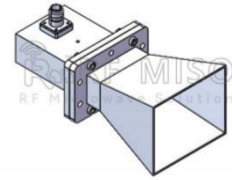
RM-SGHA284-10

Mechanical Drawing with I-type Mounting Bracket (P/N: RM-SGHA284-10I)



VSWR



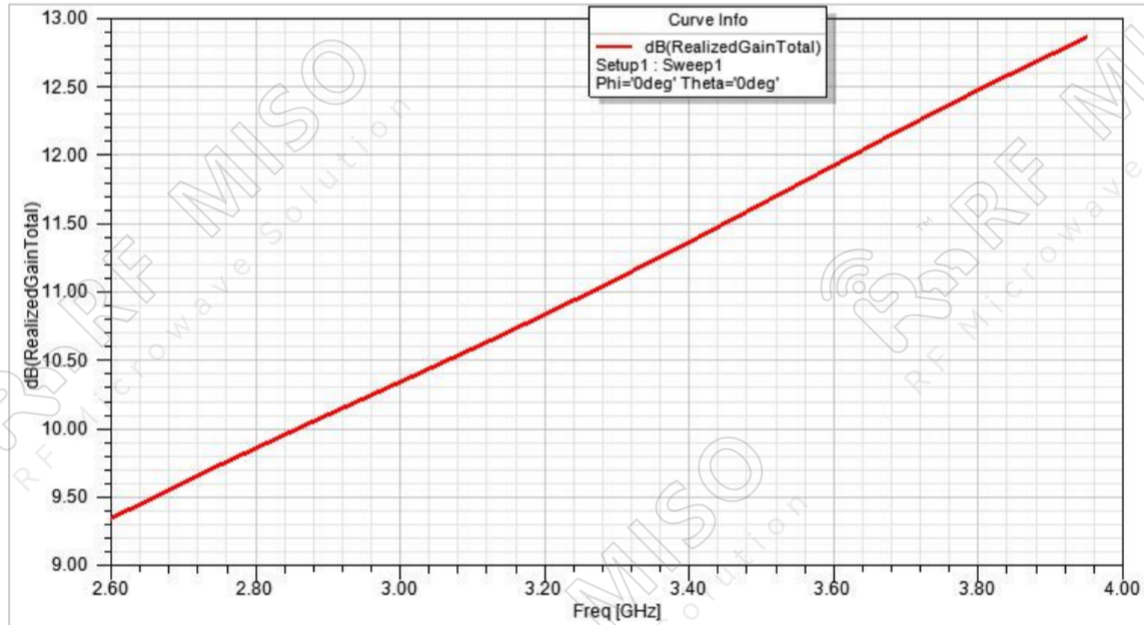


Standard Gain Horn Antenna
10dBi Typ. Gain, 2.60-3.95 GHz Frequency Range

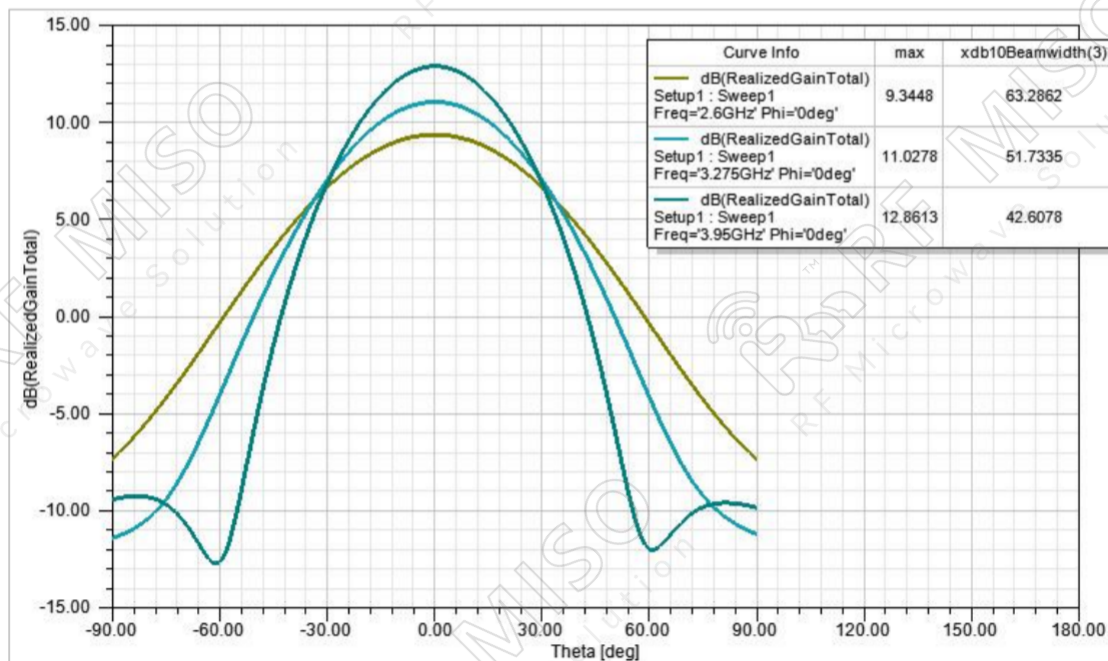
Standard Gain Horn Antenna Data Sheet

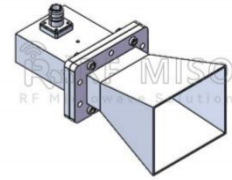
RM-SGHA284-10

Gain



Gain Pattern E-plane



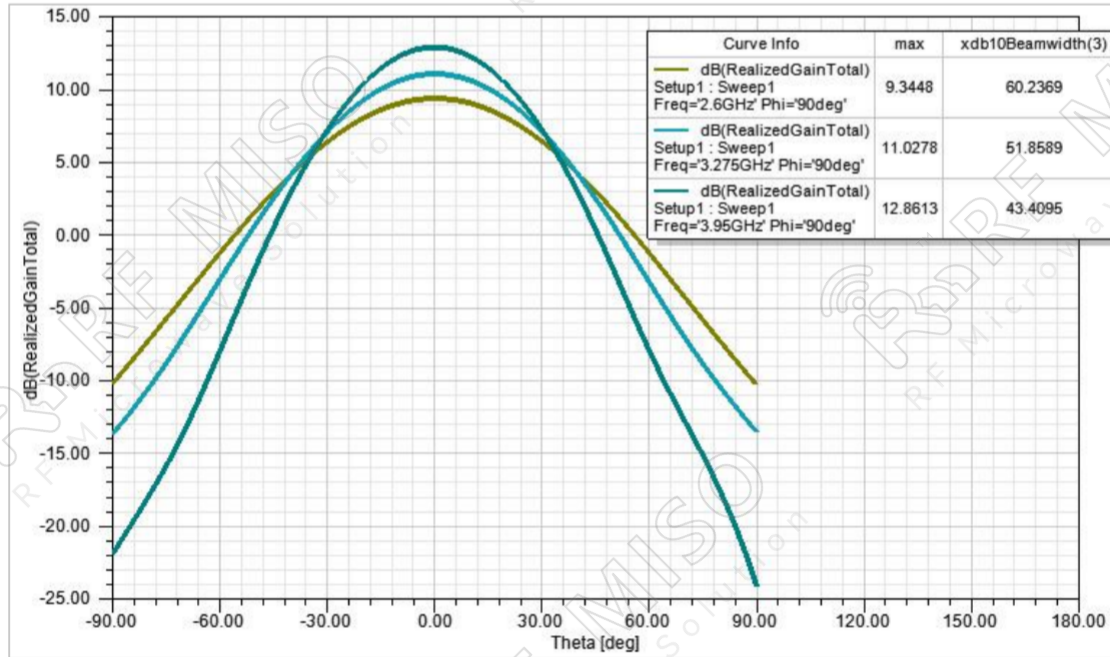


Standard Gain Horn Antenna
10dBi Typ. Gain, 2.60-3.95 GHz Frequency Range

Standard Gain Horn Antenna Data Sheet

RM-SGHA284-10

Gain Pattern H-plane



① **Rotating L-type bracket:** The rotating bracket is used for antenna polarization adjustment, and the tooling integrated with the bracket can precisely adjust the polarization directions of 0° , 45° , and 90° to ensure the accuracy and consistency of the calibration results.

Note:

- If the data presented is simulated. Actual data may vary unit to unit, slightly.
- Any foreign objects in the wave-guide will cause performance degradation and possible device damage.
- We can customize antennas according to your specific needs.