

Standard Gain Horn Antenna  
25dBi Typ. Gain, 14.5-22GHz Frequency Range

## Standard Gain Horn Antenna Data Sheet

**RM-SGHA51-25**

### Features

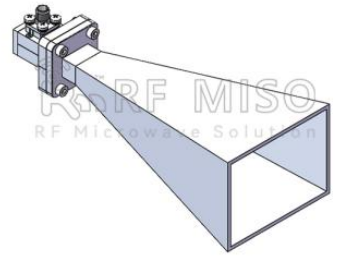
- Square Wave-guide Interface
- Low Side-lobe
- High Efficiency
- Standard Waveguide
- Linear Polarization
- High Return Loss

### Descriptions

RF MISO's **Model RM-SGHA51-25** is a linear polarized standard gain horn antenna that operates from 14.5 to 22 GHz. The antenna offers a typical gain of 25 dBi and low VSWR 1.3:1. Antenna mounting brackets include ordinary L-type mounting bracket.

### Specifications

RM-SGHA51-25		
Parameters	Specification	Unit
Frequency Range	14.5-22	GHz
Wave-guide	WR51	
Gain	25 Typ.	dBi
VSWR	1.3 Typ.	
Polarization	Linear	
Connector	SMA-Female	
Material	Al	
Finishing	Paint	
Size(L*W*H)	451.6*138*108(±5)	mm
Weight	0.690	kg
Operating Temperature	-40 ° ~ +85 °	° C

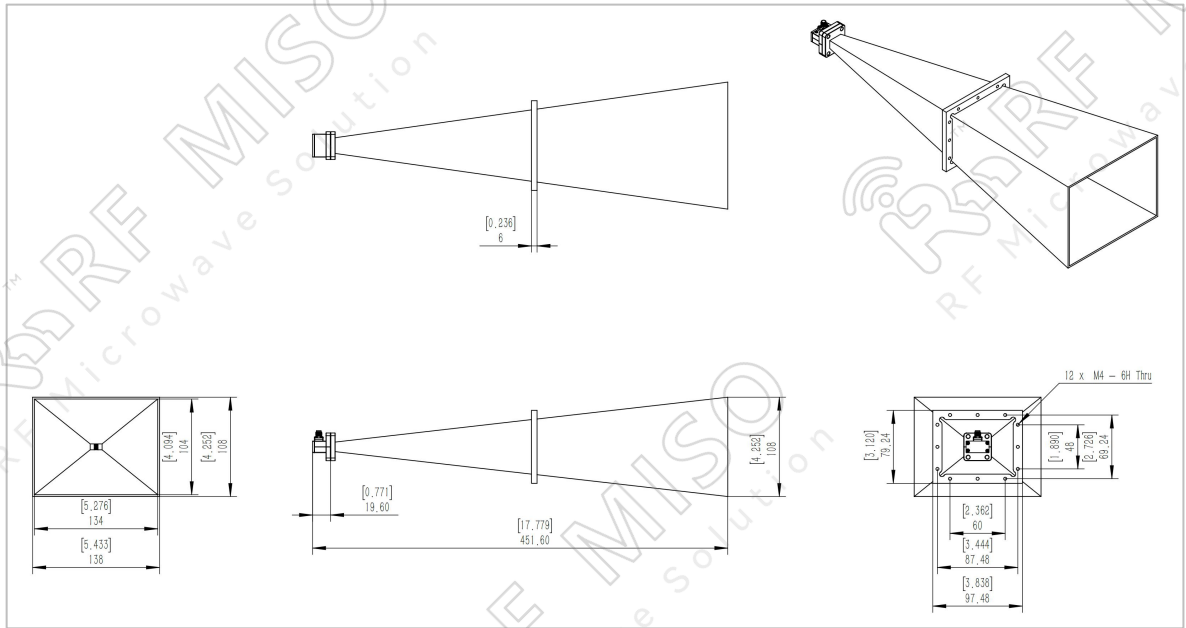


Standard Gain Horn Antenna  
25dBi Typ. Gain, 14.5-22GHz Frequency Range

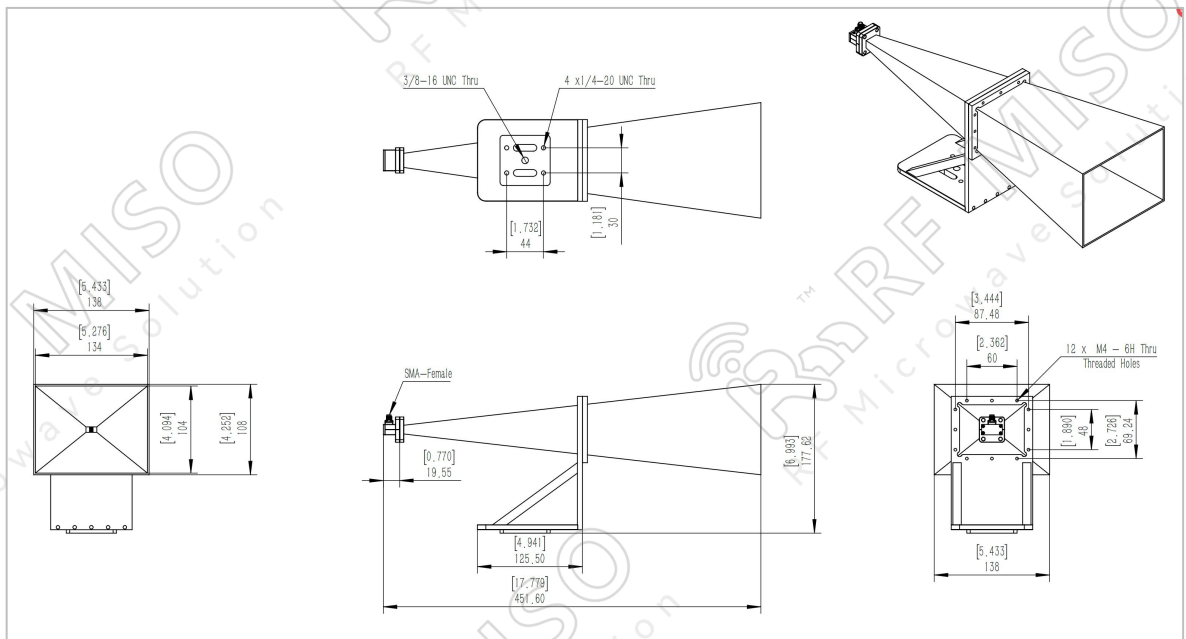
**Standard Gain Horn Antenna Data Sheet**

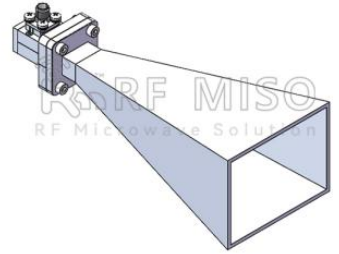
**RM-SGHA51-25**

**Mechanical Drawing**



**Mechanical Drawing with Ordinary L-type Mounting Bracket**



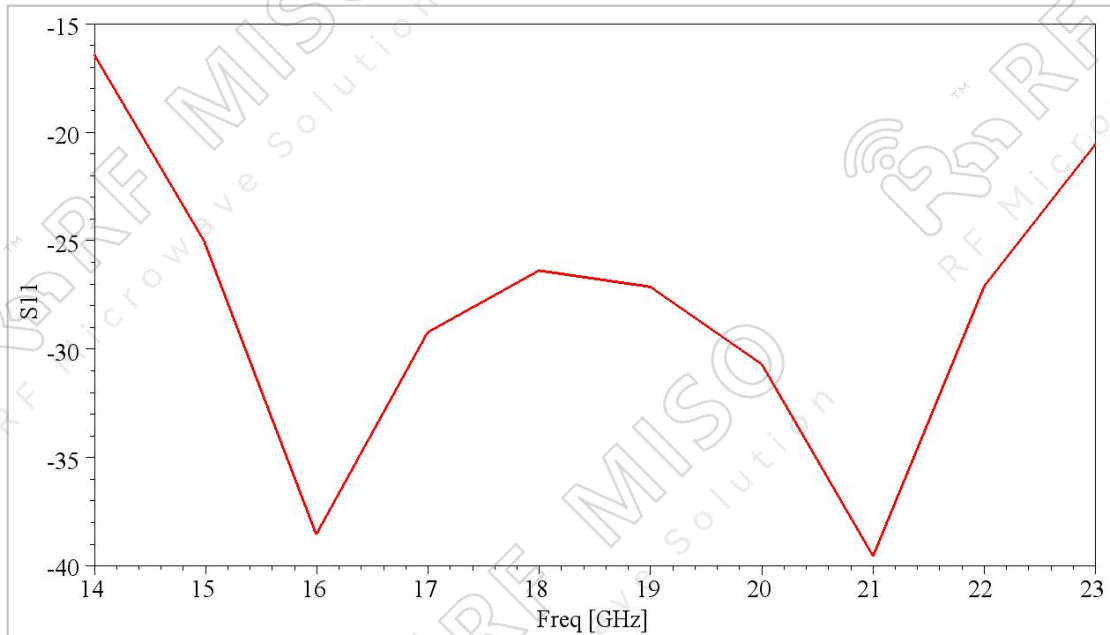


Standard Gain Horn Antenna  
25dBi Typ. Gain, 14.5-22GHz Frequency Range

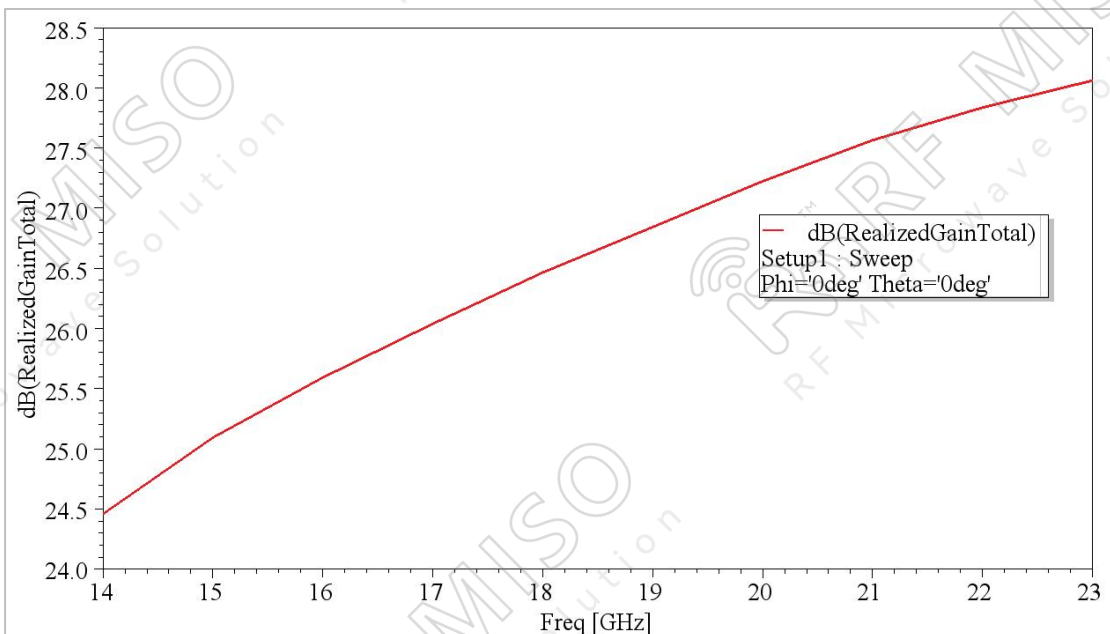
**Standard Gain Horn Antenna Data Sheet**

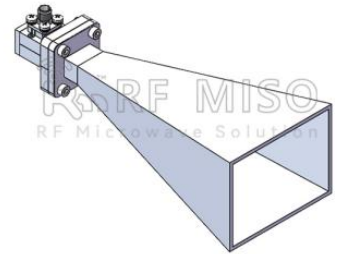
**RM-SGHA51-25**

**VSWR**



**Gain**



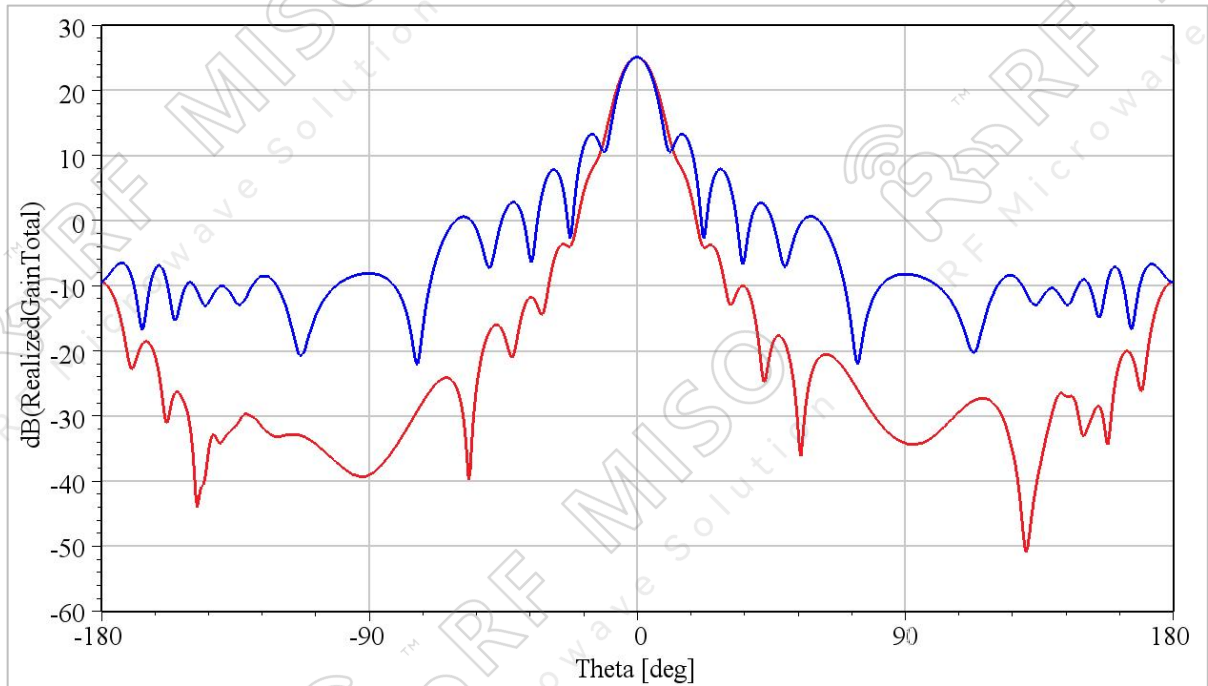


Standard Gain Horn Antenna  
25dBi Typ. Gain, 14.5-22GHz Frequency Range

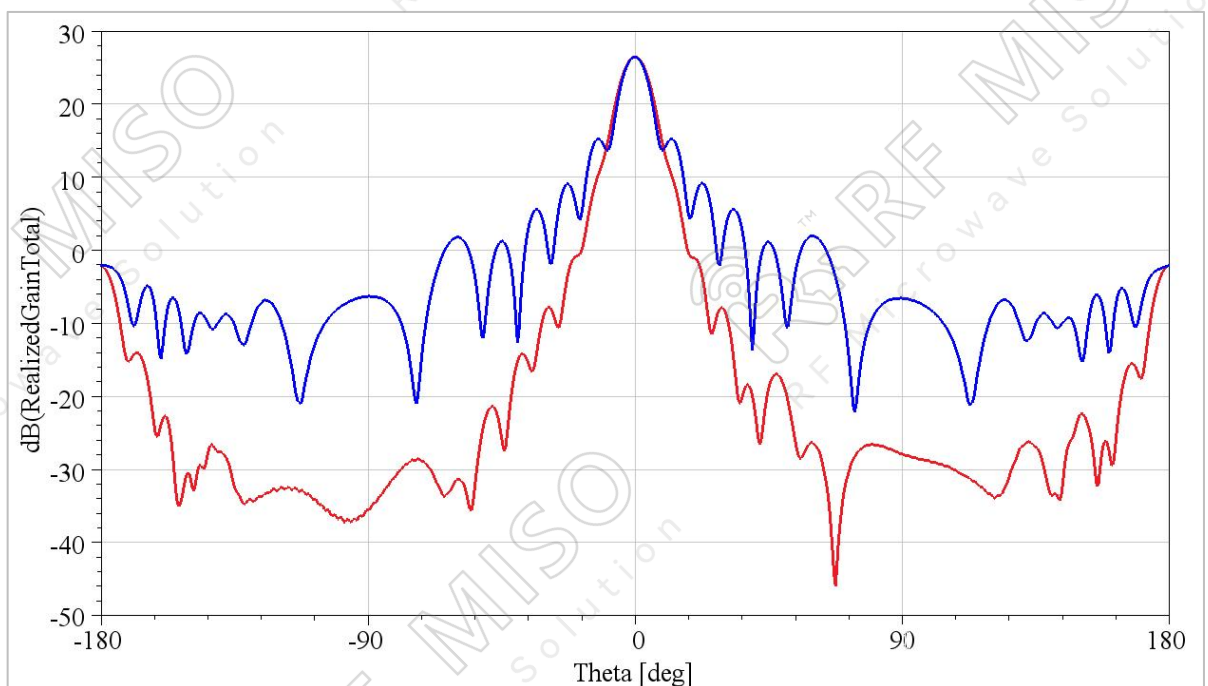
**Standard Gain Horn Antenna Data Sheet**

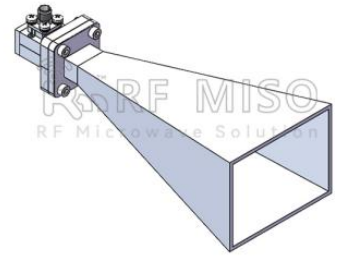
**RM-SGHA51-25**

3dB Beamwidth@15GHz\_E Plane: 10.61 ° , H Plane: 9.81 °



3dB Beamwidth@18GHz\_E Plane: 9.05 ° , H Plane: 8.28 °





Standard Gain Horn Antenna  
25dBi Typ. Gain, 14.5-22GHz Frequency Range

## Standard Gain Horn Antenna Data Sheet

**RM-SGHA51-25**

3dB Beamwidth@22GHz\_E Plane: 7.70 ° , H Plane: 6.90 °

