



Waveguide to Coaxial Adapter
26.5-40GHz Frequency Range

Waveguide to Coaxial Adapter Date Sheet

RM-WCA28

Features

- Full Waveguide Band Performance
- Low Insertion Loss and VSWR
- Test Lab
- Instrumentation

Descriptions

The **RM-WCA28** are right angle (90°) waveguide to coaxial adapters that operate the frequency range of 26.5-40GHz. They are designed and manufactured for instrumentation grade quality but offered at a commercial grade price, allowing for an efficient transition between the rectangular waveguide and 2.92-Female/2.4mm-k coaxial connector.

Specifications

RM-WCA28		
Item	Specification	Units
Frequency Range	26.5-40	GHz
Waveguide	WR28	dBi
VSWR	1.3 Max	
Insertion Loss	0.45 Max	dB
Flange	FBP320	
Connector	2.92-Female/2.4mm-K	
Average Power	50 Max	W
Peak Power	3	kW
Material	Al	
Size(L*W*H)	20.1*19.1*26.8(±5)	mm
Net Weight	0.008	Kg

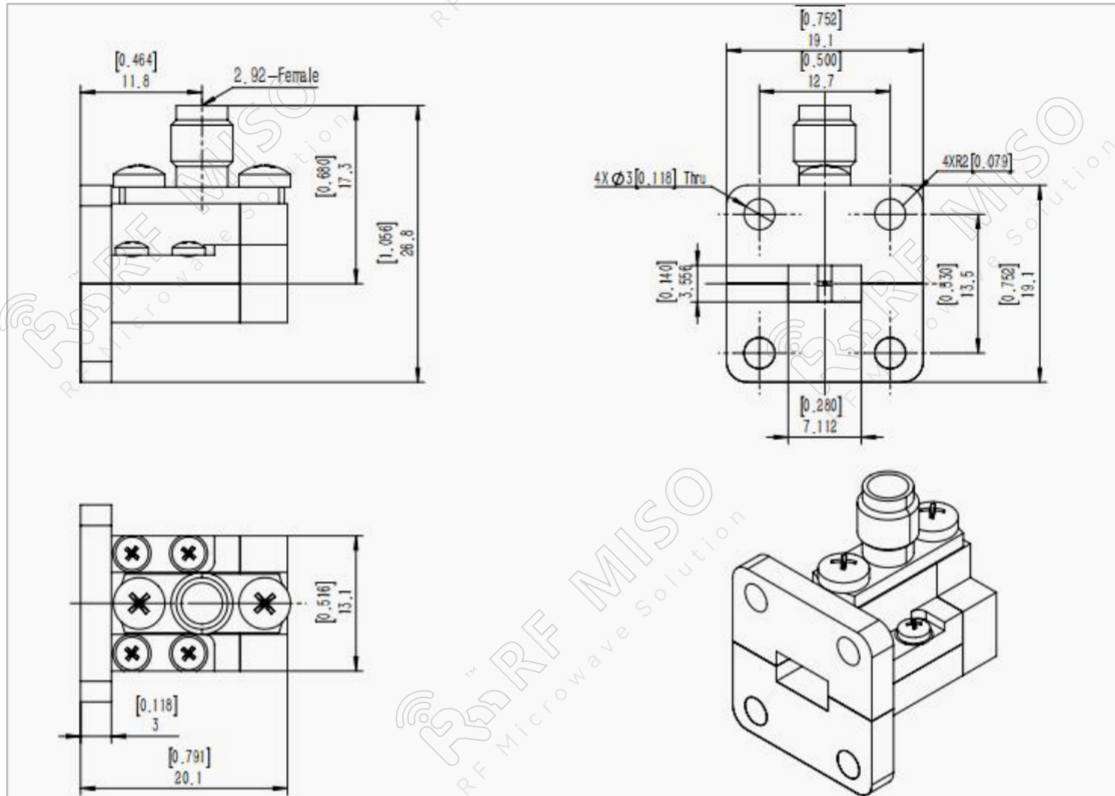


Waveguide to Coaxial Adapter
26.5-40GHz Frequency Range

Waveguide to Coaxial Adapter Date Sheet

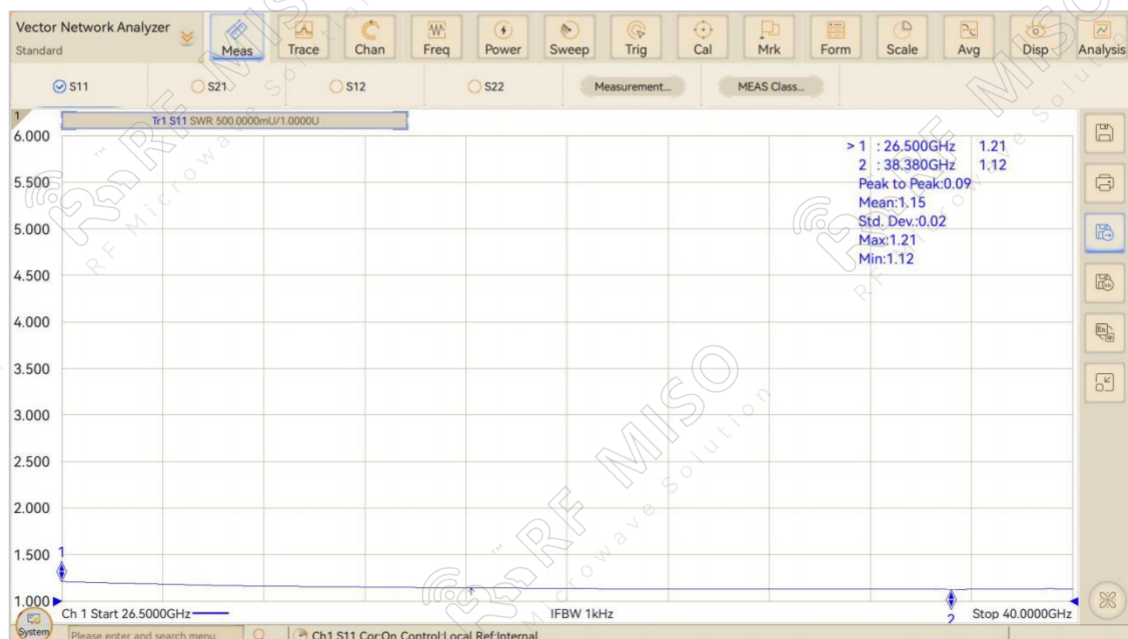
RM-WCA28

Outline Drawing



Test Data

VSWR



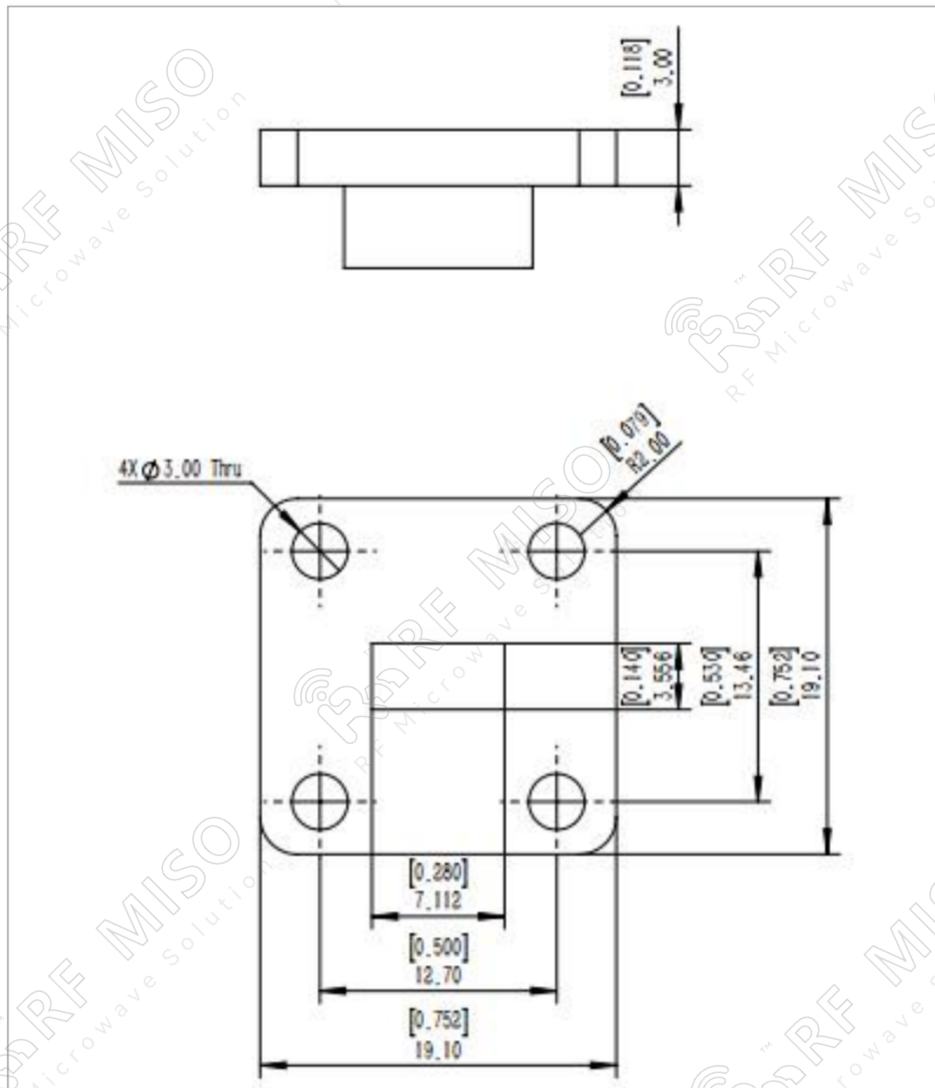


Waveguide to Coaxial Adapter
26.5-40GHz Frequency Range

Waveguide to Coaxial Adapter Date Sheet

RM-WCA28

Flange Outline Drawing



FBP320