



Waveguide Probe Antenna Data Sheet

RM-WPA430-7

Features

- WR-430 Rectangular Waveguide Interface
- Linear Polarization
- High Return Loss
- Precisely Machined

Description

The **RM-WPA430-7** is a probe antenna that operates from 1.75GHz to 2.6GHz. The antenna offers 7 dBi typical gain. The antenna supports linear polarized waveforms. The input of this antenna is a WR-430 waveguide with a FDP22 flange.

Specifications

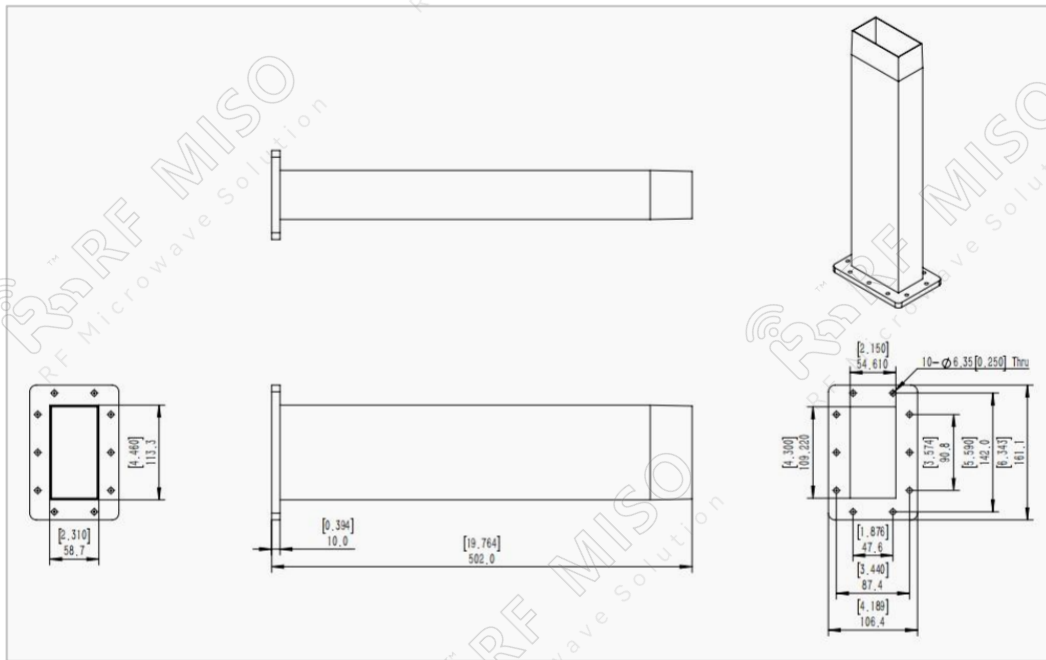
RM-WPA430-7			
Item	Specification		Units
Frequency Range	1.75-2.6		GHz
Gain	7 Typ.		dBi
VSWR	≤2		
Polarization	Linear		
Cross-polarization Isolation	40 Typ.		dB
Waveguide Size	WR-430		
Interface	FDP22(F Type)	SMA-F(C Type)	
C Type Size(L*W*H)	474.1*210*210(±5)		mm
Weight	1.173(F Type)	1.936(C Type)	kg
Body Material	Al		
Surface Treatment	Paint		
C Type Power Handling, CW	50		w
C Type Power Handling, Peak	3000		w



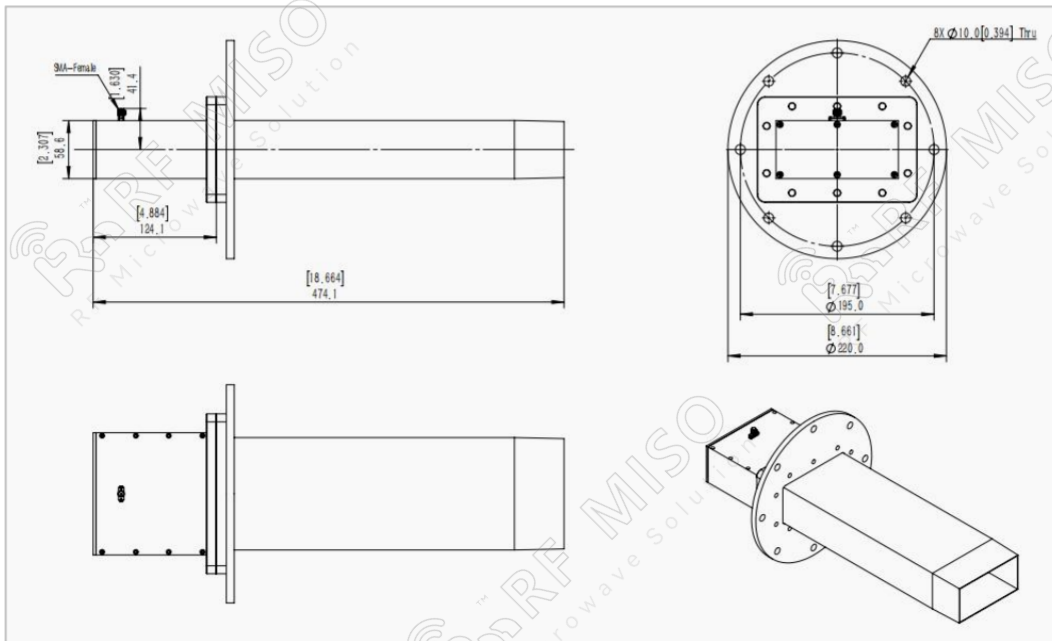
Waveguide Probe Antenna Data Sheet

RM-WPA430-7

F-Type Mechanical Drawing (P/N: RM-WPA430-7F)



C-Type Mechanical Drawing (P/N: RM-WPA430-7C)



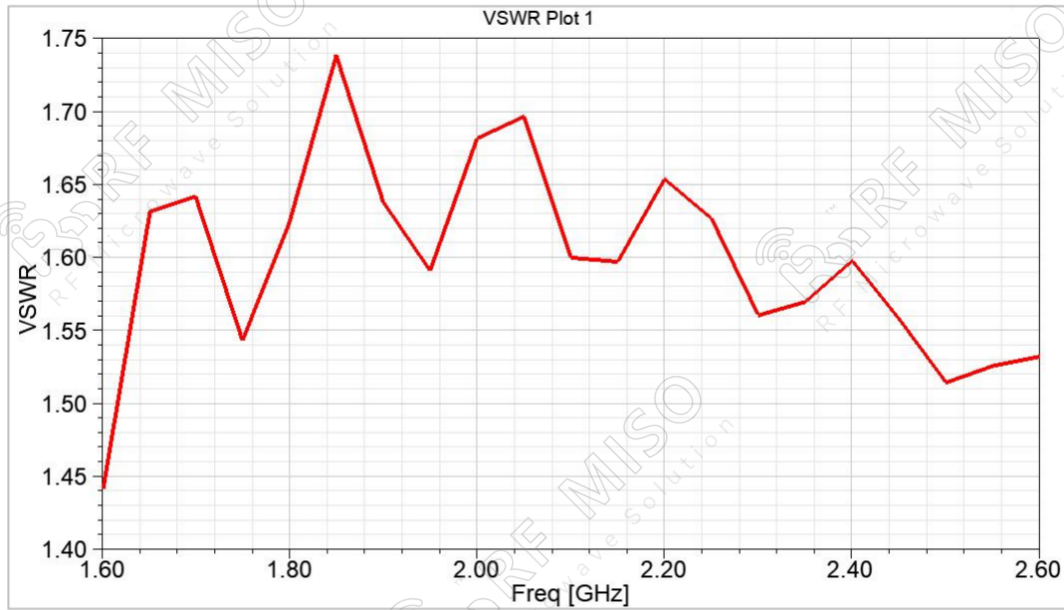


Waveguide Probe Antenna Data Sheet

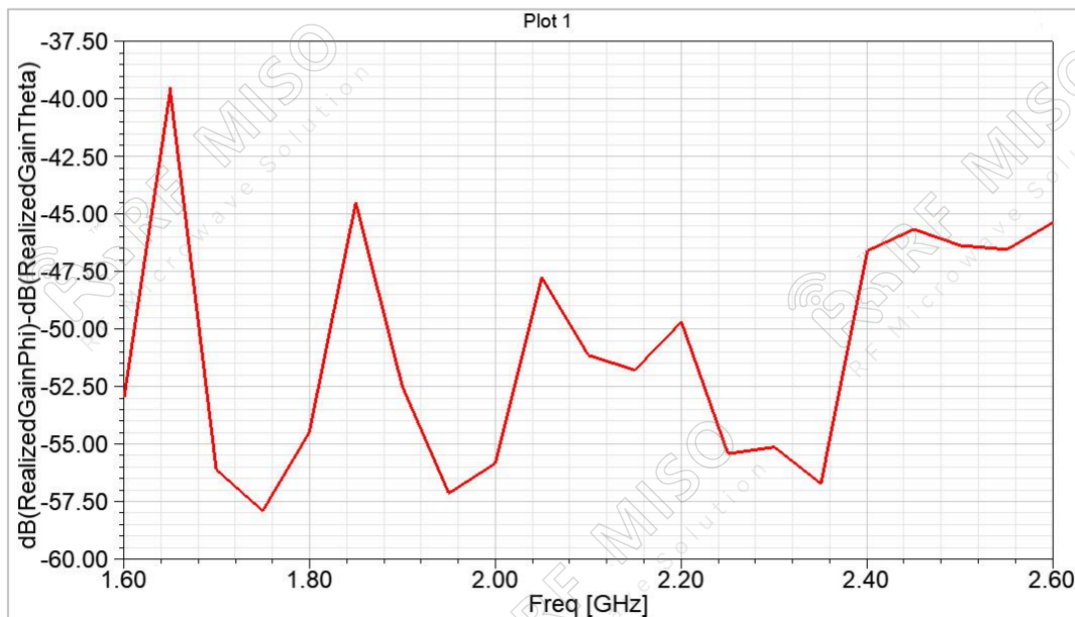
RM-WPA430-7

Simulated Data

VSWR



Polarization





Waveguide Probe Antenna Data Sheet

RM-WPA430-7

Gain

