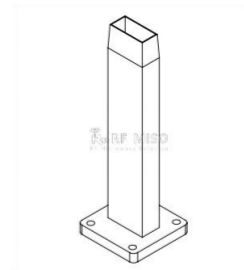


Waveguide Probe Antenna
6 dBi Typ. Gain, 8.2-12.4GHz Frequency Range



RM-WPA90-6

Waveguide Probe Antenna Data Sheet

Features

- WR-90 Rectangular Waveguide Interface
- Linear Polarization
- High Return Loss
- Precisely Machined

Description

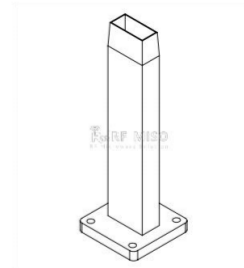
The **RM-WPA90-6** is a probe antenna that operates from 8.2GHz to 12.4GHz. The antenna offers 6 dBi typical gain. The antenna supports linear polarized wave-forms. The input of this antenna is a WR-90 waveguide with a FBP100 flange.

Specifications

RM-WPA90-6			
Item	Specification		Units
Frequency Range	8.2-12.4		GHz
Gain	6 Typ.		dBi
VSWR	≤2		
Polarization	Linear		
Cross-polarization Isolation	45 Typ.		dB
Waveguide Size	WR-90		
Interface	FBP100(F Type)	SMA-F(C Type)	
C Type, Size(L*W*H)	159.3*75*75(±5)		mm
Weight	0.052(FBP100)	0.155(C Type)	kg
Body Material	Al		
Surface Treatment	Paint		
C Type Power Handling, CW	50		W
C Type Power Handling, Peak	3000		W

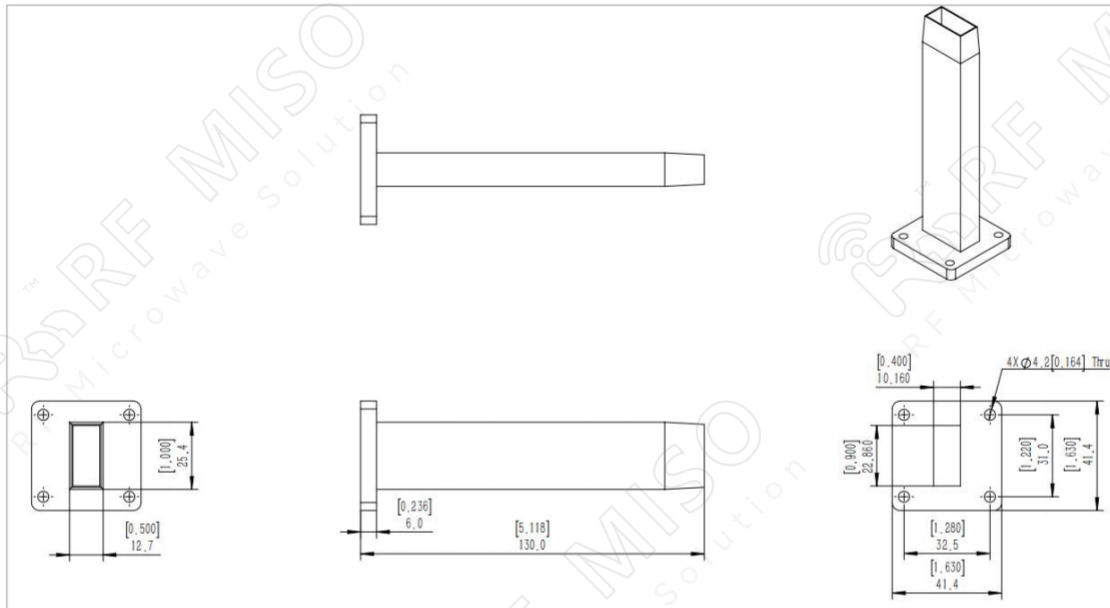
Waveguide Probe Antenna
6 dBi Typ. Gain, 8.2-12.4GHz Frequency Range

Waveguide Probe Antenna Data Sheet

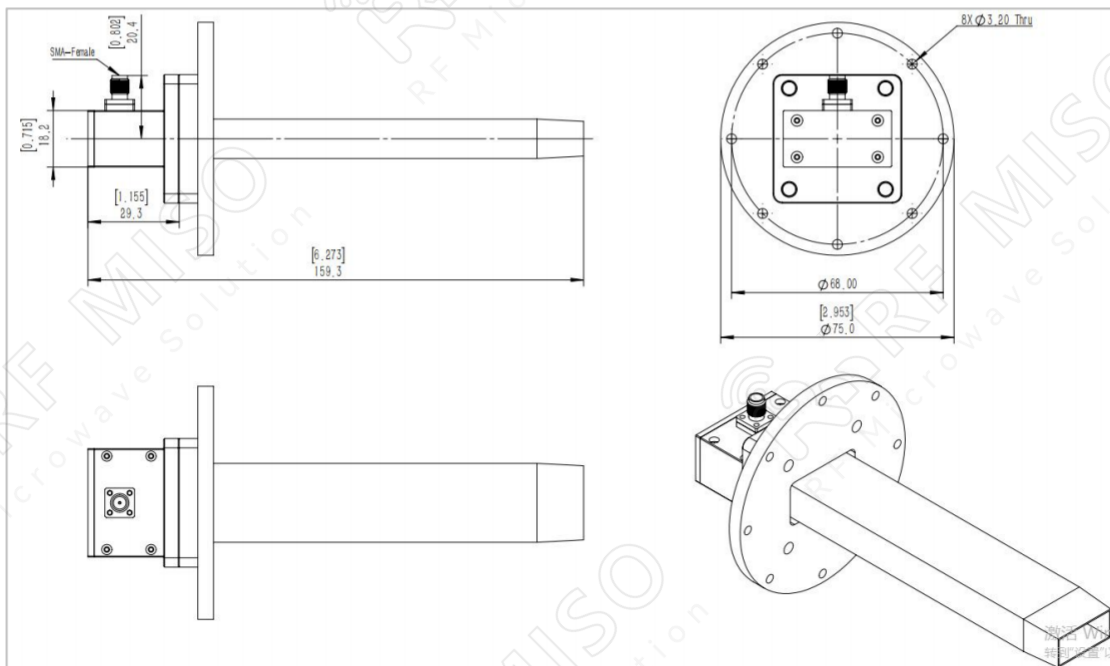


RM-WPA90-6

F-Type Mechanical Drawing (P/N: RM-WPA90-6F)



C-Type Mechanical Drawing (P/N: RM-WPA90-6C)



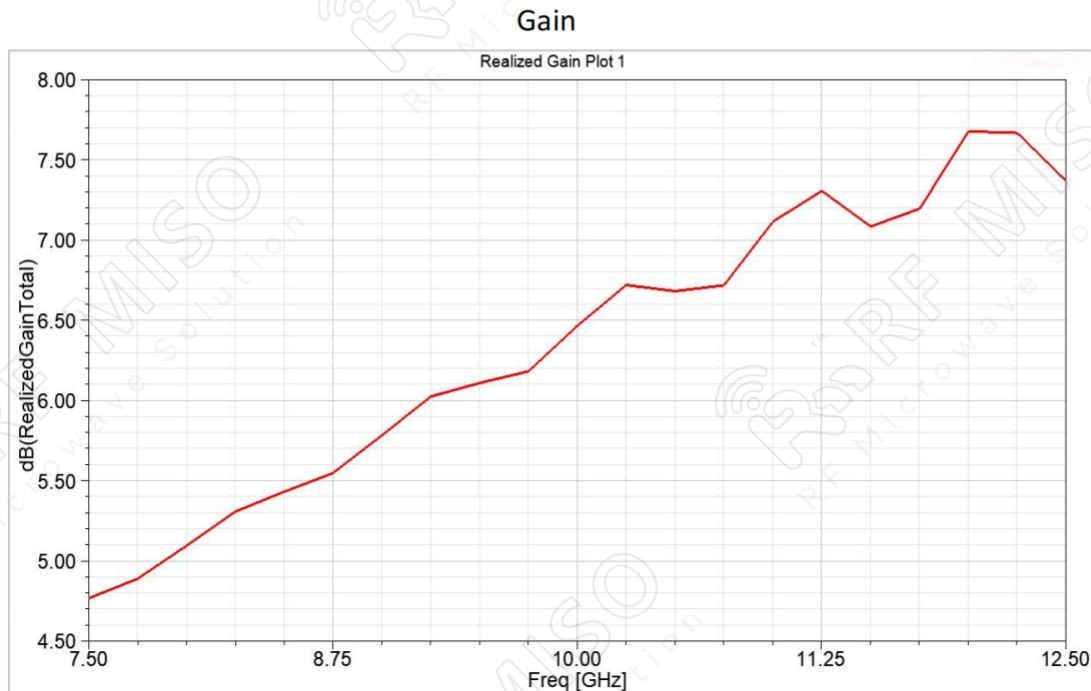
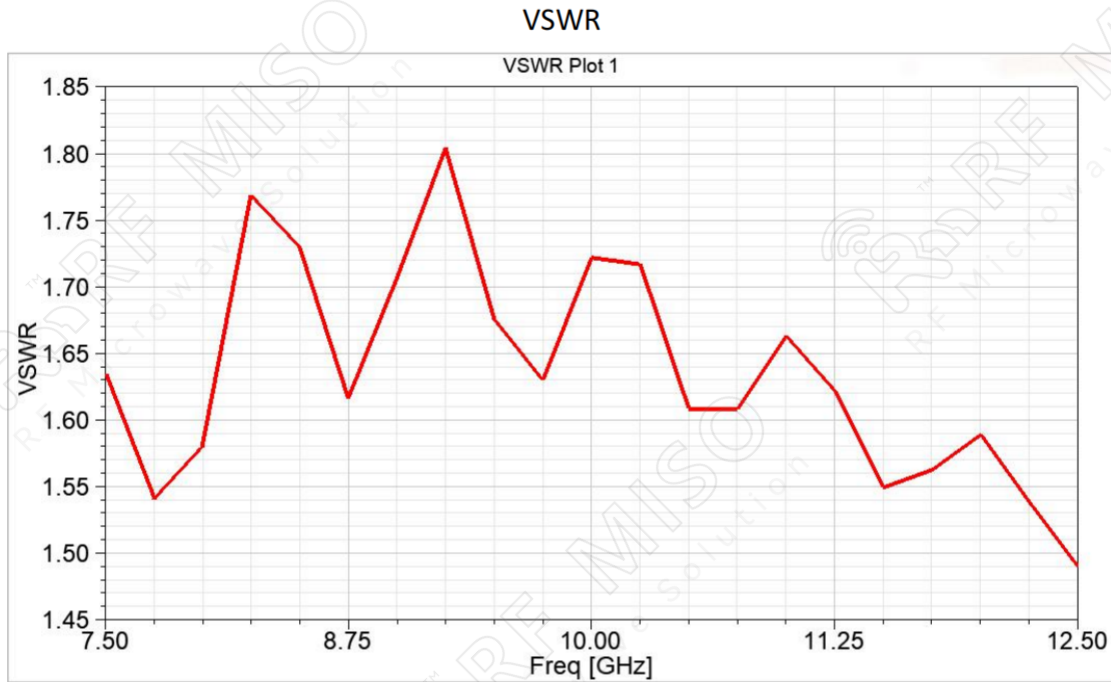
Waveguide Probe Antenna
6 dBi Typ. Gain, 8.2-12.4GHz Frequency Range



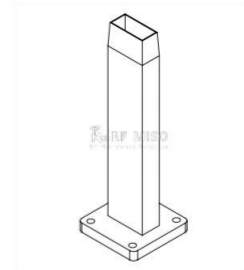
Waveguide Probe Antenna Data Sheet

RM-WPA90-6

Simulated Data



Waveguide Probe Antenna
6 dBi Typ. Gain, 8.2-12.4GHz Frequency Range



RM-WPA90-6

Waveguide Probe Antenna Data Sheet

Polarization

